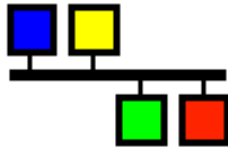


# Channel Archiver Manual

**EPICS**



February 13, 2007,  
for R3.14.4 and higher

## **Involvements**

Bob Dalesio designed the original index file, data file layout, and implemented the first prototype.

From then on, the following people have been involved at one time or another:

Thomas Birke,  
Sergei Chevtsov,  
Kay-Uwe Kasemir,  
Chris Larrieu,  
Greg Lawson,  
Craig McChesney,  
Peregrine McGehee,  
Nick Pattengale,  
Ernest Williams,  
Noboru Yamamoto.

## **No Warranty**

Although the programs and procedures described in this manual are meant to be helpful instruments for archiving, maintaining and retrieving control system data, there is no warranty, either expressed or implied, including, but not limited to, fitness for a particular purpose. The entire risk as to the quality and performance of the programs and procedures is with you. Should the programs or procedures prove defective, you assume the cost of all necessary servicing, repair or correction.

In no event will anybody, including the persons listed above, be liable to you for damages, including any general, special, incidental or consequential damages arising out of the use or inability to use the programs (including but not limited to loss of data or data being rendered inaccurate or losses sustained by you or third parties or a failure of the programs to operate with any other programs).

# Contents

<b>1</b>	<b>Overview</b>	<b>1</b>
1.1	Audience	1
1.2	Channel Archiver Toolset	1
<b>2</b>	<b>Background</b>	<b>3</b>
2.1	What is a Channel?	3
2.2	Data Sources	4
2.3	Sample Mechanisms	5
2.3.1	Monitored Sampling	6
2.3.2	Scanned Sampling	7
2.3.3	Scanned using Monitors	8
2.4	Sensible Sampling	8
2.5	Times: EPICS, Local, Greenwich, Daylight Saving	9
2.6	Time Stamp Correlation	11
2.6.1	“Raw” Data	11
2.6.2	“Before or at” Interpretation of Start Times	12
2.6.3	Spreadsheet Generation	13
2.6.4	Averaging, Linear Interpolation	14
2.6.5	Plot-Binning	15
2.7	Waveform Data	16
<b>3</b>	<b>ArchiveEngine</b>	<b>18</b>
3.1	Configuration	19
3.1.1	Time Period Specifications	21
3.1.2	write_period tag	21
3.1.3	get_threshold tag	21
3.1.4	file_size tag	21
3.1.5	ignored_future tag	21
3.1.6	buffer_reserve tag	22
3.1.7	max_repeat_count tag	22
3.1.8	disconnect tag	22
3.1.9	group tag	23
3.1.10	channel tag	23
3.2	Example for Sampling a Channel	25

3.3	Starting and Stopping	26
3.3.1	Starting	26
3.3.2	“-log” Option	26
3.3.3	“-description” Option	26
3.3.4	“-port” Option	27
3.3.5	“-nocfg” Option	27
3.3.6	The “archive_active.lock” File	27
3.3.7	More than one ArchiveEngine	27
3.3.8	Stopping	28
3.4	Engine Web Server	28
3.5	Threads	30
<b>4</b>	<b>Data Retrieval</b>	<b>31</b>
4.1	Java Archive Client	32
4.2	ArchiveExport	32
4.3	Data Server	34
4.3.1	Installation	35
4.3.2	Configuration	37
4.3.3	Testing, Debugging	37
4.3.4	Standalone Data Server	39
4.3.5	Running ArchiveDataServerStandalone	39
4.4	XML-RPC Protocol	40
4.4.1	archiver.info	40
4.4.2	archiver.archives	42
4.4.3	archiver.names	43
4.4.4	archiver.values	43
4.4.5	Note about Tiny Numbers and Precision	45
4.5	Perl Client	46
4.6	“Storage” Library	47
4.7	StripTool	47
4.8	Matlab	48
<b>5</b>	<b>Indices</b>	<b>54</b>
5.1	Index Tool	55
5.1.1	make_indexconfig.pl	56
5.1.2	Internals	56
<b>6</b>	<b>Example Setup</b>	<b>58</b>
6.1	Setup, archiveconfig.xml	59
6.2	Sampling Computer	60
6.2.1	Configuration	61
6.2.2	update_archive_tree.pl	61
6.2.3	ArchiveDaemon	62
6.2.4	Status Information	70
6.3	Sub-Archives	70
6.4	Serving Computer	72

6.4.1	Configuration	73
6.4.2	send_mailbox.pl	74
6.4.3	update_server.pl	74
6.4.4	update_indices.pl	74
6.5	Common Tasks	75
6.5.1	Modify Engine's Request Files	75
6.5.2	Add Engine or Daemon	75
6.5.3	I want to stop a Daemon	75
6.5.4	A Daemon isn't running	75
6.5.5	An Engine isn't running	75
6.5.6	Re-build Indices	76
6.5.7	Remove Channels, Data	76
6.5.8	More Data Management	76
<b>7</b>	<b>Setup, Installation</b>	<b>77</b>
7.1	Compilation	77
7.1.1	XML-RPC	78
7.1.2	Xerces XML Library	80
7.1.3	Expat	81
7.1.4	XML-Simple	81
7.1.5	Frontier	81
7.2	Installation	82
7.2.1	DTD Files	82
<b>8</b>	<b>Data Format Details</b>	<b>84</b>
8.1	Binary Index Files, RTree	84
8.1.1	Implementation Details	86
8.2	Data Files	87
8.2.1	Implementation Details	88
8.3	Index and Data File Repair	89
8.4	Data Tool	89
8.4.1	Delete Channels, Data	90
8.4.2	Combine Sub-Archives	91
8.4.3	Reduce the Data Size, Data File Repair	91
8.5	Statistics	92
8.5.1	Write Performance	93
8.5.2	Index Performance	93
8.5.3	Impact of Data Management on Performance	95
8.5.4	Binary Index compared to list index	96
8.5.5	Retrieval Performance	96
<b>9</b>	<b>Common Errors and Questions</b>	<b>98</b>
9.1	Why is there no data in my archive?	98
9.2	Why do I get #N/A, why are there missing values in my spread-sheet?	98

9.3	Why do I not get what I think I should get from the network data server?	99
9.4	Back in time?	99
9.5	Found an existing lock file 'archive_active.lck'	101
9.6	Crashes of the ArchiveEngine, ...	101
9.7	Cannot create a new data file within file size limit	102
9.8	Found an existing 'indextool_active.lck' lock file	102
9.9	What is a "regular expression"?	102
9.10	What about using NFS?	103
<b>10</b>	<b>Legacy</b>	<b>104</b>
10.1	Directory Files	104
10.2	ArchiveManager	104
10.3	CAManager, CAbgManager	105
10.4	Archive Engine ASCII Configurations	105
<b>11</b>	<b>Changes</b>	<b>107</b>
<b>12</b>	<b>Index, Bibliography</b>	<b>115</b>

# Chapter 1

## Overview

The Channel Archiver is an archiving toolset for the Experimental Physics and Industrial Control System, EPICS [1]. It can archive any value that is available via ChannelAccess (CA), the EPICS network protocol [2]. We use the term “archiver” whenever we refer to the collection of programs which allow us to take samples, place them into some storage and retrieve them again.

### 1.1 Audience

Casual users will probably only need to know how to run the “Java Archive Viewer” program and read its online help — none of which is part of this manual, except for a brief glimpse in section 4.6. They may refer to the background information in chapter 2 for a general understanding of the archiver.

Engineers who configure archive engines will need to be familiar with the fundamentals up to and including the ArchiveEngine description in chapter 3. They also need to understand the Example Setup, chapter 6, unless their site uses a different setup which is then described in site-specific documentation.

If you are stuck with installing and maintaining the archiver at your site, you have to read and memorize this full document. Sorry. The table of contents and index are meant to help, but you probably have to read it once cover to cover.

### 1.2 Channel Archiver Toolset

The archiver toolset roughly splits into the following pieces:

**Sampling:** The ArchiveEngine collects data from a given list of ChannelAccess Channels. The details of when a sample is taken etc. can be configured: One may store every change, store changes that exceed a dead band (that is configured on the CA server) or use periodic scanning. The

configuration and operation of the ArchiveEngines will obviously require some planning, as only data that was sampled and stored will be available for future retrieval and analysis. Some sensible compromise will have to be made between the urge to store all miniscule changes of all the available channels at a site on one hand, and data storage constraints on the other.

**Storage:** The data is stored in binary index and data files. Most end users need not be concerned about the internals of those files, not even where they are located, because additional indices allow several sub-archives to appear like one, bigger, combined archive. Somebody at each site, though, will need to perform maintenance tasks: Decide where the data sets are located, how they are backed up and how users can access them.

**Retrieval:** The archiver toolset provides generic retrieval tools for browsing the available channels and values, including simple multi-channel comparisons. An API allows users to write more sophisticated data analysis tools, including an XML-RPC based network protocol for remote clients.



## Chapter 2

# Background

### 2.1 What is a Channel?

The Channel Archiver deals with Channels that are served by EPICS ChannelAccess. It stores all the information available via ChannelAccess:

- Time Stamp
- Status/Severity
- Value
- Meta information:  
Units, Limits, ... for numeric channels, enumeration strings for enumerated channels.

The archiver stores the original time stamps as it receives them from ChannelAccess. It cannot check if these time stamps are valid, except that it refuses to go “back in time” because it can only append new values to the end of the data storage. It is therefore imperative to properly configure the data sources, that is: the clocks on the CA servers. For more details on the EPICS time stamps refer to section 2.5.

**NOTE:** If the CA server provides bad time stamps, for example stamps that are older than values which are already in the archive, or stamps that are unbelievably far ahead in the future, the ArchiveEngine will log a warning message and refuse to store the affected samples. This is a common reason for “Why is there no data in my archive?”. (There is one more, hard to resolve reason for back-in-time warnings, see page 99).

As for the values themselves, the native data type of the channel as reported by ChannelAccess is stored. For those familiar with the ChannelAccess API, this means: Channels that report a native data type of DBR\_xxx\_ are stored as DBR\_TIME\_xxx after once requesting the full DBR\_CTRL\_xxx information. The Archiver can therefore handle scalar and array numerics (double, int, ...), strings and enumerated types.

## 2.2 Data Sources

Before even considering the available sampling options, it is important to understand the data sources, the ChannelAccess servers whose channels we intend to archive. In most cases we will archive channels served by an EPICS Input/Output Controller (IOC) which is configured via a collection of EPICS records. Alternatively, we can archive channels served by a custom-designed CA server that utilizes the portable CA library PCAS. In those cases, one will have to contact the implementor of the custom CA server for details. In the following, we concentrate on the IOC scenario and use the analog input record from listing 2.1 as an example.

```
record(ai, "aiExample")
{
    field(SCAN, ".1_second")
    field(ADEL, "0.1")
    field(EGU, "Volts")
    field(PREC, "2")
    field(HOPR, "4095")
    field(LOPR, "0")
    field(HIHI, "10")
    field(HIGH, "9")
    field(LOW, "1")
    field(LOLO, "0")
    field(HHSV, "MAJOR")
    field(HSV, "MINOR")
}
```

Listing 2.1: “aiExample” record

What happens when we try to archive the channel “aiExample”? We will receive updates for the record’s value field (VAL). In fact we might as well have configured the archiver to use “aiExample.VAL” with exactly the same result. The record is scanned at 10 Hz, so we can expect 10 values per second. Almost: The archive dead band (ADEL) limits the values that we receive via CA to changes beyond 0.1. When archiving this channel, we could store at most 10 values per second or try to capture every change, utilizing the ADEL configuration to limit the network traffic.

**NOTE:** The archiver has no knowledge of the scan rate nor the dead band configuration of your data source! You have to consult the IOC database or PCAS-based code to obtain these.

With each value, the archiver stores the time stamp as well as the status and severity. For aiExample, we configured a high limit of 10 with a MAJOR severity. Consequently we will see a status/severity of HIHI/MAJOR whenever the VAL field reaches the HIHI limit. In addition to the value (VAL field), the archiver

also stores certain pieces of meta information. For numeric channels, it will store the engineering units, suggested display precision, as well as limits for display, control, warnings, and alarms. For enumerated channels, it stores the enumeration strings. Applied to the aiExample record, the suggested display precision is read from the PREC field, the limits are derived from HOPR, LOPR, HIHI, ..., LOLO.

**NOTE:** You will have to consult the record reference manual or even record source code to obtain the relations between record fields and channel properties. The analog input record's EGU field for example provides the engineering units for the VAL field. We could, however, also try to archive aiExample.SCAN, that is the SCAN field of the same record. That channel aiExample.SCAN will be an *enumerated* type with possible values "Passive", ".1 second" and so on. The EGU field of the record no longer applies! Another example worth considering: While HOPR defines the upper control limit for the VAL field, what is the upper control limit if we archive the HOPR field itself?

It is also important to remember that the archiver — just like any other ChannelAccess client — does **not** know anything about the underlying EPICS record type of a channel. In fact the channel might not be based on any record at all if we use a PCAS-based server. Given the name of an analog input record, it will store the record's value, units and limits, that is: most of the essential record information. Given the name of a stepper motor record, the archiver will also store the record's value (motor position) with the units and limits of the motor position. It will not store the acceleration, maximum speed or other details that you might consider essential parts of the record. To archive those, one would have to archive them as individual channels.

## 2.3 Sample Mechanisms

This section describes the basic sampling mechanisms and their issues, while the actual configuration of an archive engine is detailed in section 3.1.

Each ChannelAccess Server provides time-stamped data. An IOC for example stamps each value when the corresponding record is processed. These time-stamps offer nano-second granularity. Most applications will not require the full accuracy, but some hardware-triggered acquisition, utilizing interrupts on a fast CPU, might in fact put the full time stamp resolution to good use.

Other examples where exact time stamps are of interest are channels for user setpoints or faults. These channels might not change for a long time, but when they change, it is often important to know the exact time of the setpoint adjustment or fault.

The archive engine tries to preserve the time stamps provided by the CA server, which results in some difficulties for the various sampling modes as well as the user of the resulting data.

**NOTE:** The values dumped into the data storage will not offer much indication of the sampling method. In the end, we only see values with time stamps. If for example the time stamps of the stored values change every 20 seconds, this

could be the result of a monitored channel that happened to change every 20 seconds. We could also face a channel that changed at 10 Hz but was only sampled every 20 seconds.

### 2.3.1 Monitored Sampling

In this mode, the ArchiveEngine requests a CA monitor, i.e. it subscribes to changes of the channel, then stores all the values that the server sends out. The CA server configuration determines when values are sent.

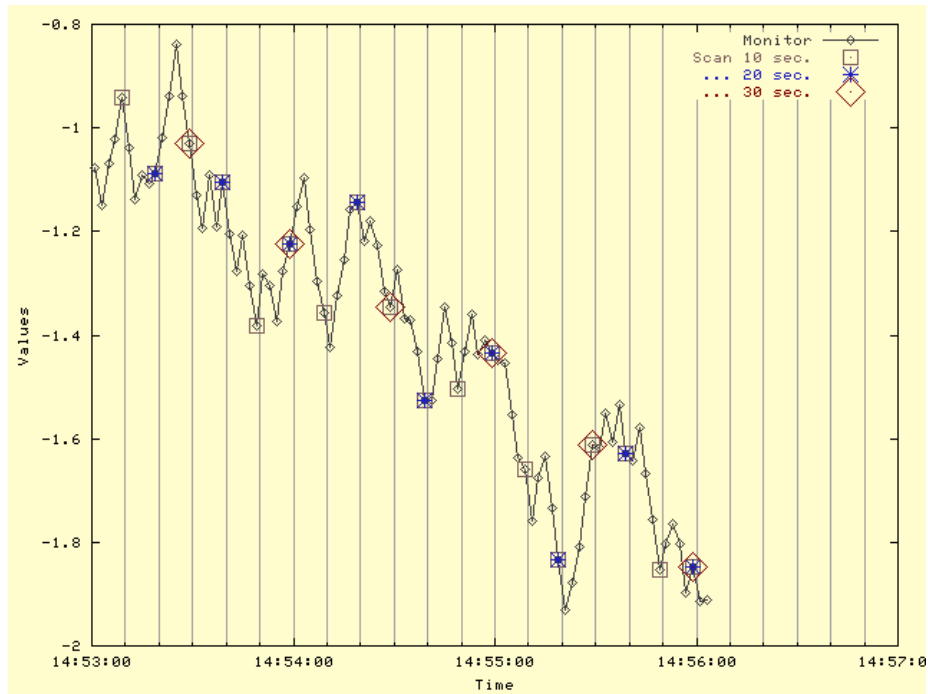


Figure 2.1: Time Stamps and Sampling

This sounds simple enough; The archive captures each change of the channel, with the original time stamp. In fig. 2.1, black diamonds represent the actual changes of the channel that would be archived with monitored sampling. In practice, there are several problems:

- Channels like setpoints or fault indicators rarely change in an operational machine. But if a channel never changes, you get no new data. Since the Engine also logs whenever ChannelAccess declares the channel 'disconnected', we can assume that the last value in the archive is still valid, until eventually a new value arrives. In reality, however, users often suspect that something is wrong if they see no new sample in the archive for days. And often, they are correct.

- If the channel changes very rapidly, you get a lot of data, filling the disk with probably more detail than ever needed. In any case, the engine cannot simply allocate more and more memory to buffer incoming samples between writing them to disk, because a rogue channel that suddenly sends a burst of values would then cause the engine to use up all the computer's memory. Consequently, one needs to configure an expected period between value changes, based upon which the engine prepares its internal memory buffers. If many more values arrive, some are ignored.

### 2.3.2 Scanned Sampling

In this mode, the ArchiveEngine periodically requests a value from the CA server, for example once every minute. The value returned by the CA server is added to the archive. So even if the value does not change, we take a sample, which gives more of a warm fuzzy feeling than the monitored mode. To prevent saving the exact same value over and over again, wasting disk space, only 'repeat' counts are stored: Just before a new value is logged, the previous, unchanged value is logged with special status/severity values to indicate the repeat count. If the value never changes, the engine increments the repeat count to a configurable maximum, then logs it and starts again. So even for values that never change, the archive should contain a periodic sample.

For most slowly varying values like water temperatures or a long-term archive of operating voltages etc., this is a very practical mode. Possible issues:

- Not suitable for many "fault" indicator type channels: If a brief fault happens between sample times, the engine never notices it.
- Since each "scan" is handled by actually requesting a value from the CA server and logging the result, i.e. a round-trip network request for each value, scanning should be limited to maybe once a minute or slower.
- Since each sample is stored with its original time stamp, users are often surprised when retrieving archived data. Assuming we scan a channel every 30 seconds, the following happens: About every 30 seconds, the ArchiveEngine requests and stores the current value of the channel *with its original time stamp!*. So while the ArchiveEngine might take a sample at

14:53:30, 14:54:00, 14:54:30, 14:55:00, ...,

it stores the time stamps that come with the values, not the nice looking, equidistant sample times. Depending on network delays and the scan rate of the record, that value might have been time-stamped some time before the engines sample time. In Fig. 2.1 those times happened to be

14:53:29.091, 14:53:59.092, 14:54:29.094, 14:54:59.095, ...

### 2.3.3 Scanned using Monitors

The ArchiveEngine is configured to scan periodically, e.g. one sample every 5 seconds. But instead of actively requesting a value from the CA server at this rate, it establishes a monitor and only saves a value every 5 seconds.

To clarify the "Scan" with and without monitors, assume our data source changes at 1 Hz. If we want to store a value every 30 seconds, it is most efficient to send a 'read'-request every 30 seconds. If, on the other hand, we want to store a value every 5 seconds, it is usually more effective to establish a monitor, so we automatically receive updates about every second, and simply *ignore* 4 of the 5 values.

When configuring a channel, the user only selects "Scan" with a sampling rate. The decision between the simple scan and the scan based on monitors is automatic, depending on the scan period. If the scan period is smaller, i.e. faster than the *get.threshold* configuration parameter described in section 3.1.3, monitors are used.

Possible issues:

- For scan rates of maybe 1 to 30 seconds, there is usually a performance advantage because of the reduced network traffic in comparison to the plain scan with round-trip network requests. But in order to give repeat count information similar to the plain scan, the engine still needs to periodically check the channel for newly arrived monitors. At fast scan periods like 0.1 seconds, this results in higher CPU load than basic monitored sampling.
- The engine has problems with merging data from the internal scan with incoming monitors. Assume that we scan every 10 seconds. At the end of one such scan interval, we might notice that we received a monitor, time stamped in the previous sample interval, so it is logged. At the next sample interval, we might not have received anything new, so we increase the repeat count. At an even later sample interval, we might still not have received anything new, and having accumulated the maximum repeat count, we log a special 'repeat' sample, time-stamped at the sample interval time. Just a split second later, we might receive a new monitor, stamped before the last sample interval, but because of network delays it only arrived now. Since the archive already contains the special 'repeat' value, this new sample goes back-in-time and cannot be logged as is. To get it into the archive, its time stamp is adjusted to match the preceding 'repeat' value.

## 2.4 Sensible Sampling

The data source configuration and sampling need to be coordinated. In fact the whole system needs to be understood. When we deal with water tank temperatures as one example, we have to understand that the temperature is unlikely

to change rapidly. Let us assume that it only varies within 30...60 seconds. The analog input record that reads the temperature could be configured to scan every 2 seconds. Not because we expect the temperature to change that quickly but mostly to provide the operator with a warm and fuzzy feeling that we are still reading the temperature: The operator display will show minuscule variations in temperature every 2 seconds. An ArchiveEngine that is meant to capture the long-term trend of the tank temperature could then sample the value every 60 seconds.

On the other extreme could be channels for vacuum readings along linac cavities. The records that read them might be configured to scan as fast as the sensing devices permit, maybe beyond 10 Hz, so that interlocks on the IOC run as fast as possible. Their dead bands (ADEL and MDEL) on the other hand are configured to limit the data rate that is sent to monitoring CA clients: Only meaningful vacuum changes are sent out, significantly reducing the amount of data sent onto the network. The ArchiveEngine can then be configured to monitor the channel: During normal operation, when the vacuum is fairly stable, it will only receive a few values, but whenever the vacuum changes because of a leak, it will receive a detailed picture of the event.

Another example is a short-term archive that is meant to store beam position monitor (BPM) readings for every beam pulse. The records on the IOC can then be configured with ADEL=-1 and the ArchiveEngine to use monitors, resulting in a value being sent onto the network and stored in the archive even if the values did not change. The point here is to store the time stamps and beam positions for each beam pulse for later correlation. Needless to say that this can result in a lot of data if the engine is kept running unattended. The preferred mode of operation would be to run the engine only for the duration of a short experiment.

**NOTE:** The scanning of the data source and the ArchiveEngine run in parallel, they are not synchronized. Example: If you have a record scanned every second and want to capture every change in value, configuring the ArchiveEngine to scan every second is **not** advisable: Though both the record and the ArchiveEngine would scan every second, the two scans are not synchronized and rather unpredictable things can happen. Instead, the "Monitor" option for the ArchiveEngine should be used for this case.

## 2.5 Times: EPICS, Local, Greenwich, Daylight Saving

The EPICS base software that is used by the IOCs and also the archiver deals with time as seconds and nanoseconds since January 1, 1990. This "EPICS Time" is using Greenwich Mean Time (GMT), also known as Universal Time Coordinates (UTC). So the EPICS Time stamp 0 stands for 01/01/1990, 00:00:00 UTC.

People living in Germany are typically in a time zone one hour east of UTC.

For them, the EPICS Time stamp 0 translates into January 1, 1990, at 01:00:00 in the morning. This is one example of “Local Time”. Anybody living in the United States is of course familiar with time zone conversions ever since you tried to match what’s in the TV Guide with what’s actually on TV.

The EPICS base software includes routines for converting EPICS Time into Local Time and vice versa. Before EPICS R3.14, these routines used an environment variable `EPICS_TS_MIN_WEST` which needed to be set to the minutes west of UTC. “-60” for Germany in the above example. Since R3.14, this environment variable is no longer used. The time stamp conversion code in EPICS base now relies on the operating system and the C/C++ runtime library to handle any time zone issues.

It is important to remember that the data served by CA Servers is in EPICS time, that is based on UTC and *not* your local time. The ArchiveEngine stores that data as received, which is again in EPICS time based on UTC. When the network data server is asked for samples, those are also based UTC, albeit with a slight shift from a 1990 epoch to 1970, simply because this is more convenient to use in most programming languages. C, C++, Java and perl all include routines for converting 1970-epoch seconds to local time and back.

Time stamps are only converted to local time when they are displayed or entered. The ArchiveExport program will provide you with e.g. a spreadsheet that has a “Time” column in local time. The Java Archive Client will plot the data with a time axis in local time. Whenever you specify start and end times for a data request, this is done in local time.

An example of possible consequences: Assume you live in San Francisco, California (UTC-8), and you receive a CD-ROM with archived data from the SNS in Oak Ridge, Tennessee (UTC-5). If you want to investigate what happened at noon, 12:00:00, on 01/01/2004 at the SNS, you will have to query for 09:00:00 to adjust for the different time zones.

The EPICS base code also relies on the operating system services for daylight saving time (DST). At least under RedHat Linux 9 this seems to work fine when you are inside the United States. Example: In the US, daylight saving time went into effect on 04/04/2004, 02:00:00, and I archived a “stringin” record which had device support that converted the time stamp of the record into a string, including daylight savings information. The result looks like this when the data is exported again on the next day, that is at a time where DST is in effect:



EPICS Seconds	Time	Value
449917196	01:59:56	04/04/2004 01:59:56.805984000
449917197	01:59:57	04/04/2004 01:59:57.816036000
449917198	01:59:58	04/04/2004 01:59:58.826102000
449917199	01:59:59	04/04/2004 01:59:59.836110000
449917200	03:00:00	04/04/2004 03:00:00.846121000 (DST)
449917201	03:00:01	04/04/2004 03:00:01.856196000 (DST)
449917202	03:00:02	04/04/2004 03:00:02.867379000 (DST)
449917203	03:00:03	04/04/2004 03:00:03.876315000 (DST)
449917204	03:00:04	04/04/2004 03:00:04.886356000 (DST)

The seconds of the raw EPICS time stamp simply continue to count up through the transition because UTC is not affected by DST. (This test was run in the US Mountain time zone, UTC-7, and the nanoseconds of the EPICS time stamp are omitted.) The Value of the string record, which contains the local time as the IOC saw it, jumps from what would have been 02:00:00 to 03:00:00 DST. When the time stamp is printed (at a later time when DST applies), the “Time” column matches the times in the value string.

After changing the computer’s clock to times in January 2004 and 2005, that is to times outside of DST before and after the data in the archive, the result is the exact same: The EPICS time stamp routines use the DST settings that apply for a given time stamp, not for the current time.

Countries differ in their algorithms for switching to DST, and if your operating system does not follow the rules in your location, you might see sudden offsets in time between the wall clock and the archived data.

## 2.6 Time Stamp Correlation

We have stressed more than once how the Channel Archiver tries to preserve the original time stamps as sent by the CA servers. This commonly leads to difficulties when comparing values from different channels. The following subsections investigate the issue in more detail and show several ways of manipulating the data in order to allow data reduction and cross-channel comparisons. In short, the options described in the following subsections are:

**Raw Data:** Provides every archived sample “as is”.

**Spreadsheet:** Staircase interpolation/filling to form a spreadsheet.

**Averaging, Linear Interpolation:** Maps the raw data onto specific time stamps.

**Plot Binning:** Reduces the number of samples for plotting.

### 2.6.1 “Raw” Data

Even when two channels were served by the same IOC, and originating from records on the same scan rate, their time stamps will slightly differ because a

single CPU cannot scan several channels at exactly the same time. Tab. 2.1 shows one example.

Time	A	Time	B
17:02:28.700986000	0.0718241	17:02:28.701046000	-0.086006
17:02:37.400964000	0.0543581	17:02:37.510961000	-0.111776
...		...	

Table 2.1: Example Time Stamps for two Channels A and B.

When we try to export this data in what we call raw spreadsheet format, a problem arises: Even though the two channels' time stamps are close, they do not match, resulting in a spreadsheet as shown in Tab. 2.2. Whenever one channel has a value, the other channel has none and vice versa. This spreadsheet does not yield itself to further analysis; calculations like  $A - B$  will always yield '#N/A' since either A or B is undefined.

Time	A	B
3/22/2000 17:02:28.700986000	0.0718241	—
3/22/2000 17:02:28.701046000	—	-0.086006
3/22/2000 17:02:37.400964000	0.0543581	—
3/22/2000 17:02:37.510961000	—	-0.111776
...		

Table 2.2: Spreadsheet for raw Channels A and B.

### 2.6.2 “Before or at” Interpretation of Start Times

When you invoke a retrieval tool with a certain start time, the archive will rarely contain a sample for that exact start time. As an example, you might ask for a start time of “07:00:00” on some date. Not because you expect to find a sample with that exact time stamp, but because you want to look at data from the beginning of that day's operations shift, which nominally began at 7am.

The software underlying all retrieval tools anticipates this scenario by interpreting all start times as “before or at”. Given a start time of “07:00:00”, it returns the last sample before that start time, unless an exact match is found. So in case a sample for the exact start time exists, it will of course be returned. But if the archive contains no such sample, the previous sample is returned.

Applied to Tab. 2.2, channel A, you would get the samples shown in there not only if you asked for “17:02:28.700986000”, the exact start time, but also if you asked for “17:02:30”. It is left to the end user to decide whether that previous sample is still useful at the requested start time, if it's “close enough”, or if it needs to be ignored.

### 2.6.3 Spreadsheet Generation

There are several ways of mapping channels onto matching time stamps. One is what we call Staircase Interpolation or Filling: Whenever there is no current value for a channel, we re-use the previous value. This is often perfectly acceptable because the CA server will only send updates whenever a channel changes beyond the configured deadband. So if we monitored a channel and did not receive a new value, this means that the previous value is still valid — at least within the configured deadband. In the case of scanned channels we have no idea how a channel behaved in between scans, but if we e.g. look at water temperatures, it might be safe to assume that the previous value is still “close enough”. Table 2.3 shows the previously discussed data subjected to staircase interpolation. Note that in this example there is no initial value for channel B, resulting in one empty spreadsheet cell. From then on, however, there are always values for both channels, because any missing samples are filled by repeating the previous one. Because of the interpretation of start times explained in section 2.6.2, you would get the result in Tab. 2.3 not only if you asked for values beginning “3/22/2000 17:02:28.700986000”, but also when you asked for e.g. “17:02:30”: Since neither channel A nor B have a sample for that exact time stamp, the retrieval library would select the preceding sample for each channel, resulting in the output shown in Tab. 2.3.

**NOTE:** While table 2.3 marks the filled values by printing them in italics, spreadsheets generated by archive retrieval tools will not accent the filled values in any way, so care must be taken: Those filled values carry artificial time stamps. If you depend on the original time stamps in order to synchronize certain events, you must not use any form of interpolation but always retrieve the raw data.

Time	A	B
3/22/2000 17:02:28.700986000	0.0718241	—
3/22/2000 17:02:28.701046000	<i>0.0718241</i>	-0.086006
3/22/2000 17:02:37.400964000	0.0543581	<i>-0.086006</i>
3/22/2000 17:02:37.510961000	<i>0.0543581</i>	-0.111776
...		

Table 2.3: Spreadsheet for Channels A and B with Staircase Interpolation; “filled” values shown in italics.

You did of course notice that the staircase interpolation does not reduce the amount of data. Quite the opposite: In the above examples, channels A and B each had 2 values. With staircase interpolation, we don’t get a spreadsheet with 2 lines of data but 4 lines of data. The main advantage of filling lies in the preservation of original time stamps.

### 2.6.4 Averaging, Linear Interpolation

Both averaging and linear interpolation generate artificial values from the raw data. This can be used to reduce the amount of data: For a summary of the last day, it might be sufficient to look at one value every 30 minutes, even though the archive could contain much more data. Another aspect is partly cosmetic and partly a matter of convenience: When we look at Tab. 2.3, we find rather odd looking time stamps. While these reflect the real time stamps that the ArchiveEngine received from the ChannelAccess server, it is often preferable to deal with data that has time stamps which are nicely aligned, for example every 10 seconds: 11:20:00, 11:20:10, 11:20:20, 11:20:30 and so on.

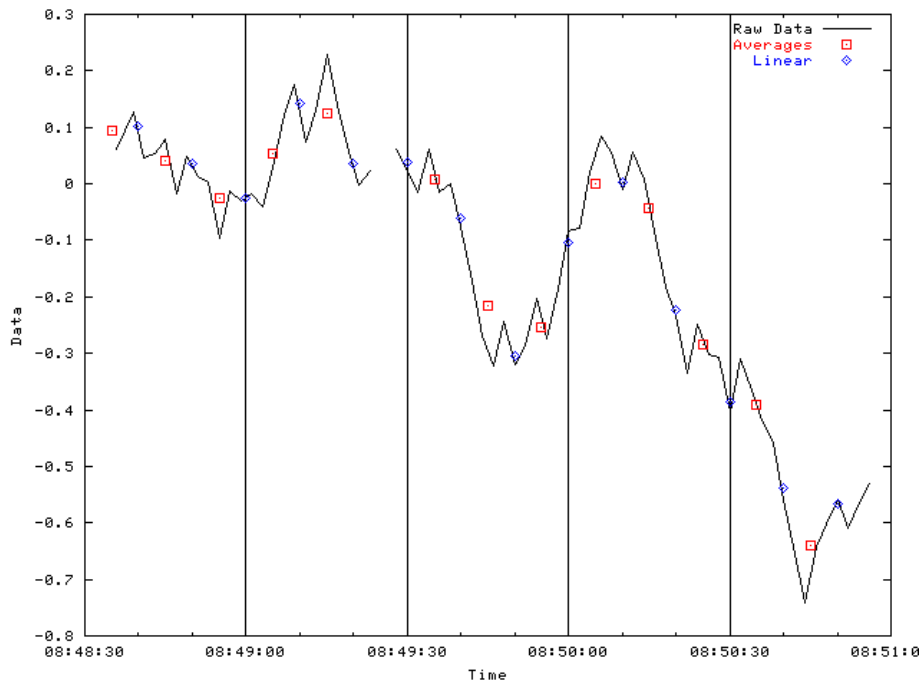


Figure 2.2: Averaging and Linear Interpolation, see text.

To accomplish this, the data is binned. For example, the time span of one day, 24 hours, can be divided into 2880 sections, each of which covers 30 seconds. Each of those sections is called a “Bin”. The raw samples for the day are then investigated as follows:

- When we select Averaging, the average over all the samples that fall into a bin is returned. The center of the bin is used as a time stamp.
- When we select Linear Interpolation, the value of the channel at the border of each bin is determined via linear interpolation between the last

sample before and the first sample after the border of the bin. The border of each bin determines the time stamp.

Fig. 2.2 compares the result of retrieving the raw data with averaging and linear interpolation over 10-second-bins. Averages are determined for the center of each bin, i.e. 08:48:35, 08:48:45, ..., while linear interpolation generates values for the bin-borders at 08:48:40, 08:48:50, ... The linearly interpolated values do in fact exactly fall onto the connecting lines between raw samples if you consider the full time stamps, but the plotting program chosen to produce fig. 2.2 rounds down to full seconds.

Note the gap just before 08:49:30: Since the channel was disconnected, no average is returned for the bin from 08:49:20 to 08:49:30. Averaging and linear interpolation are further limited to scalar, numeric samples of type double, float or int. Arrays or strings will not be interpolated.

**NOTE:** Averaging and linear interpolation must be used with caution. Both methods can hide important details in the raw data, and it is up to the user to determine when to use them and with what bin size. If for example you want to compare several water tank temperatures and you know that the water temperature can only change slowly, linear interpolation for e.g. every 60 seconds might be a reasonable approach.

On the other hand, consider a channel that monitors radiation counts per minute. The raw data will mostly reflect the fairly constant background radiation. Of interest are probably only temporary 'spikes' in the data, since they indicate radiation incidents that need to be correlated with e.g. beam loss. Interpolation of this type of data over 5 minutes will yield useless results. Most temporary increases in radiation within a bin are lost, you will only see values close to the background radiation as they were measured around the bin borders. Averaging will show a slight increase for those bins that contain a radiation incident, but the magnitude of those 'spikes' will not at all compare to the raw data.

### 2.6.5 Plot-Binning

This method is meant for plotting, providing data that — when plotted — looks very much if not exactly like the raw data, albeit significantly reducing the number of data points and hence speeding up the plot. To accomplish this, the data is binned as follows: For each bin, the initial, minimum, maximum, and final sample is determined. In case the bin contains 'info' samples like 'disconnected' or 'archive off', the last of them is also kept. Those up to 5 samples are then sorted in time and duplicates are removed. So if a bin contains 0, 1 or two samples, the result contains those original samples. Otherwise, the result might contain up to 5 samples per bin for the initial, minimum, maximum, last 'info' and final sample in time order.

Fig. 2.2 compares the raw data of a Klystron test run, 2400 samples, with the result of plot-binning, bin size 600 seconds, yielding around 280 samples.

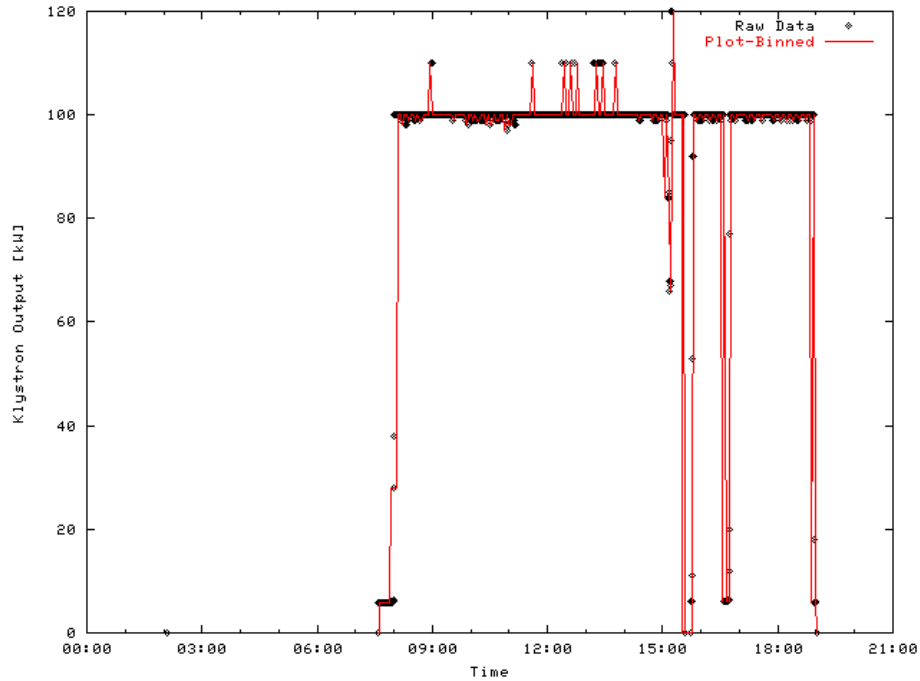


Figure 2.3: Plot-Binning, see text.

While plot binning significantly reduced the sample count, the overall shape of the klystron output as well as the outliers are well preserved.

Note that the result does not provide any hints as to whether you are looking at the "initial" sample of a bin or the "final". As long as we plot the resulting stream of samples such that the width of the plot in pixels is close to the number of bins, there is little visual difference between the raw data plot and the binned plot. Typical numbers for  $N$  are around the width of a computer screen in pixels, that is 800...1200.

## 2.7 Waveform Data

In principle, the archiver toolset can be used for waveform channels as well as scalar channels. The archive engine stores the waveform data as received by ChannelAccess, and you can get that information back out. In practice, you might not be happy with the result because of basic waveform related shortcomings in EPICS.

In all the cases listed below, the basic waveform samples and timestamp provided by ChannelAccess and thus the archiver are incomplete. One cannot display or otherwise use the waveform data without additional meta information

like sample rate, positions etc. Some sites develop custom ChannelAccess clients which obtain this information from user input, a relational database, or other channels, maybe determining the latter based on a naming standard. The generic archiver toolkit only provides the basic data, no waveform meta information.

- Fast-ADC-Type Data

Your waveform data might represent the signal of a fast ADC. ChannelAccess and thus the archiver toolkit present you with the waveform samples, which probably stand for the voltages sampled by the ADC. You also get one timestamp. It might indicate the time when the ADC was triggered, which might be the time stamp of the first sample in the waveform. To use the data, you also need to know the sample rate, that is the time period between samples, but neither ChannelAccess nor the archiver hand you that number.

- Multi Channel Analyzer or Scanner Type Data

In this case, the waveform samples might represent the intensities or histogram count of something that was measured at different positions or at different energies. To use that data, you also need that position or energy or other characteristic information for each sample.

- Images

Some waveforms are used to represent images, where for example the first 640 samples of a waveform represent the first "line" of the image, the next 640 samples the next line and so on. Nothing tells you the line width, if one sample represents gray-scale intensity, or if 3 samples together represent red/green/blue etc.

- Custom Structures

In other cases, EPICS waveforms are used to exchange custom data, ranging from strings that exceed 40 characters to arbitrary binary data. You need to know how to decode the information.

## Chapter 3

# ArchiveEngine

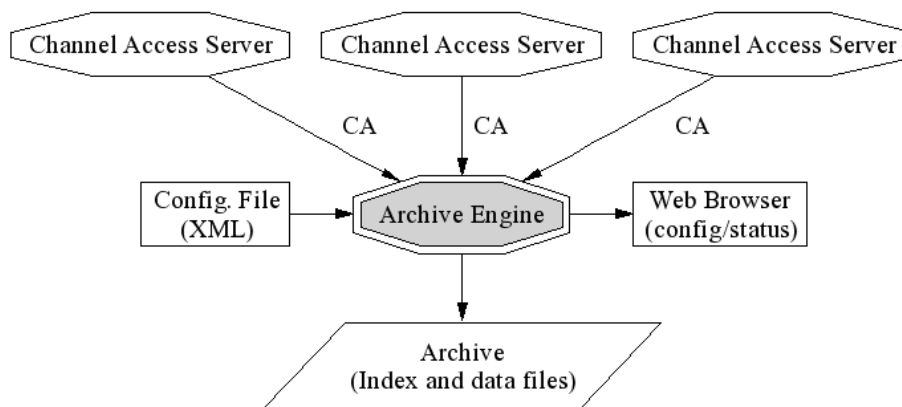


Figure 3.1: Archive Engine, refer to text.

The ArchiveEngine is an EPICS ChannelAccess client. It can save any channel served by any ChannelAccess server. One ArchiveEngine can archive data from more than one CA server. For more details on the CA server data sources, refer to section 2.2 on page 4. The ArchiveEngine supports the sampling options that were described in section 2.3 on page 5. The ArchiveEngine is configured with an XML file that lists what channels to archive and how. Each given channel can have a different periodic scan rate or be archived in monitor mode (on change). One design target was: Archive 10000 values per second, be it 1000 channels that change at 10Hz each or 10000 channels which change at 1Hz.

The ArchiveEngine saves the full information available via ChannelAccess: The value, time stamp and status as well as control information like units, display and alarm limits, ... The data is written to an archive in the form of local



disk files, specifically index and data files. Chapter 8 provides details on the file formats. While running, status and configuration of the ArchiveEngine are accessible via a built-in web server, accessible via any web browser on the network. The chapter on data retrieval, beginning on page 31, introduces the available retrieval tools that allow users to look at the archived data.

### 3.1 Configuration

The ArchiveEngine expects an XML-type configuration file that follows the document type description format from listing 3.1 (see section 7.2.1 on DTD file installation). Listing 3.2 provides an example. In the following subsections, we describe the various XML elements of the configuration file.

```
<?xml version="1.0" encoding="UTF-8"?>
<!-- DTD for the ArchiveEngine Configuration -->
<!-- Note that we do not allow empty configurations: -->
<!-- Each config. must contain at least one group, -->
<!-- and each group must contain at least 1 channel. -->
<!ELEMENT engineconfig (( write_period|get_threshold|
                           file_size|ignored_future|
                           buffer_reserve|
                           max_repeat_count|disconnect)*,
                           group+)>
<!ELEMENT group (name,channel+)>
<!ELEMENT channel (name,period,(scan|monitor),disable?)>
<!ELEMENT write_period (#PCDATA)><!-- int seconds -->
<!ELEMENT get_threshold (#PCDATA)><!-- int seconds -->
<!ELEMENT file_size (#PCDATA)><!-- MB -->
<!ELEMENT ignored_future (#PCDATA)><!-- double hours -->
<!ELEMENT buffer_reserve (#PCDATA)><!-- int times -->
<!ELEMENT max_repeat_count (#PCDATA)><!-- int times -->
<!ELEMENT disconnect EMPTY>
<!ELEMENT name (#PCDATA)>
<!ELEMENT period (#PCDATA)><!-- double seconds -->
<!ELEMENT scan EMPTY>
<!ELEMENT monitor EMPTY>
<!ELEMENT disable EMPTY>
```

Listing 3.1: XML DTD for the Archive Engine Configuration

```

<?xml version="1.0" encoding="UTF-8" standalone="no"?>
<!DOCTYPE engineconfig SYSTEM "engineconfig.dtd">
<engineconfig>
  <write_period>30 sec</write_period>
  <get_threshold>20 sec</get_threshold>
  <file_size>30</file_size>
  <ignored_future>1 hour</ignored_future>
  <buffer_reserve>3</buffer_reserve>
  <max_repeat_count>120</max_repeat_count>
  <group>
    <name>Vacuum</name>
    <channel><name>vac1 </name>
      <period>0.1 sec</period><monitor/>
    </channel>
    <channel><name>vac2 </name>
      <period>1 sec</period><monitor/><disable/>
    </channel>
    <channel><name>vac3 </name>
      <period>2 sec</period><scan/>
    </channel>
  </group>
  <group>
    <name>RF</name>
    <channel><name>rf1 </name>
      <period>1 sec</period><monitor/>
    </channel>
    <channel><name>rf2 </name>
      <period>1 sec</period><monitor/>
    </channel>
    <channel><name>rf3 </name>
      <period>1 sec</period><scan/>
    </channel>
  </group>
</engineconfig>

```

Listing 3.2: Example Archive Engine Configuration

### 3.1.1 Time Period Specifications

Whenever time periods need to be specified, the engine is quite flexible. A value of 5 seconds can be expressed as "5 seconds", "5 secs", "5 s" or just "5", since the default time unit for most options is seconds. There is one exception in the `ignored_future` tag, and to avoid confusion in general, it is best to always specify the units and not assume "seconds".

In addition to "seconds", one can use suffixes "minutes", "hours" or "days", as well as their abbreviations down to just "m", "h" respectively "d". Consequently, a scan period of 30 seconds can be written as "30 sec", "30 seconds", "30 s", "30.000", "30", "0.5 minutes", "0.5 min", "0.5 m" and possibly in many more ways.

### 3.1.2 `write_period` tag

This is a global option that needs to precede any group and channel definitions. It configures the write period of the Archive Engine in seconds. The default value of 30 seconds means that the engine will write to Storage every 30 seconds.

### 3.1.3 `get_threshold` tag

This global option determines when the archive engine switches from "Sampled" operation to "Sampled using monitors" as described in section 2.3. Defaults to 20 seconds.

### 3.1.4 `file_size` tag

This global option determines when the archive engine will create a new data file. The default of 100 means that the engine will continue to write to a data file until that file reaches a size of approximately 100 MB, at which point a new data file is created.

### 3.1.5 `ignored_future` tag

Defines "too far in the future" as "now + `ignored_future`". It is specified in hours, and samples with time stamps beyond that time are ignored. Note that this is the one exception where the default period is in hours, not seconds as for all the other tags!

Details: For strange reasons, the Engine sometimes receives values with invalid time stamps. The most common example is a "Zero" time stamp: After an IOC reboots, all records have a zero time stamp until they are processed. For passive records, as commonly used for operator input, this time stamp will stay zero until someone enters a value on an operator screen or via a save/restore

utility. The Engine cannot archive those values because the retrieval relies on the values being sorted in time. A zero time stamp does not fit in.

Should an IOC (for some unknown reason) produce a value with an outrageous time stamp, e.g. "1/2/2035", another problem occurs: Since the archiver cannot go back in time, it cannot add further values to this channel until the date "1/2/2035" is reached. Consequently, future time stamps have to be ignored. (default: 6h)

### 3.1.6 buffer\_reserve tag

To buffer the samples between writes to the disk, the engine keeps a memory buffer for each channel. The size of this buffer is rounded up to the next integer from

$$\text{buffer\_reserve} \times \frac{\text{write\_period}}{\text{scan\_period}}$$

Since writes can be delayed by other tasks running on the same computer as well as disk activity etc., the buffer is bigger than the minimum required: buffer\_reserve defaults to 3.

### 3.1.7 max\_repeat\_count tag

When sampling in a scanned mode (as opposed to monitored), the engine stores only new values. As long as a value matches the preceding sample, it is not written to storage. Only after the value changes, a special value marked with a severity of ARCH\_REPEAT and a status that reflects the number of repeats is written, then the new sample is added.

This procedure conserves disk space. The disadvantage lies in the fact that one does not see any new samples in the archive until the channel changes, which can be disconcerting to some users. Therefore the max\_repeat\_count configuration parameter was added. It forces the engine to write a sample even if the channel has not change after the given number of repeats. The default is 120, meaning that a channel that is scanned every 30 seconds will be written once an hour even if it had not changed.

### 3.1.8 disconnect tag

This global option selects how "disabled" channels (see 3.1.10) are handled. By default, disabled channels will stay connected via ChannelAccess, but no values are archived. When setting the "disconnect" option, disabled channels will instead disconnect from ChannelAccess and then, later, attempt to reconnect once the channel is again enabled.

In general, it is a good idea to stay with the default. That way we leave the connection handling to the ChannelAccess client library, which is optimized to do this. The engine will still receive new data, and as soon as the channel is re-enabled, it can thus store the most recent value.

The disconnect feature was added for the rare case that you have IOCs that are temporarily off-line, and some PV will tell you about the fact. You can then use that PV to disable and disconnect the affected channels, preventing the ChannelAccess client library from continuing to issue connection attempts. Another example would be that you want to reduce the network load of continuing CA monitors for channels that are archived via monitors at a high rate but disabled. Most likely, though, checking your channels' update rates or using a temporary archive engine might be the better solution.

### 3.1.9 group tag

Every channel belongs to a group of channels. The configuration file must define at least one group. For organizational or esthetic purposes, you might add more groups. One important use of groups is related to the “disable” feature, see section 3.1.10.

#### name tag

This mandatory sub-element of a group defines its name.

### 3.1.10 channel tag

This element defines a channel by providing its name and the sampling options. A channel can be part of more than one group. To accomplish this, simply list the channel as part of all the groups to which it should belong.

#### name tag

This mandatory sub-element of a channel defines its name. Any name acceptable for ChannelAccess is allowed. The archive engine does not perform any name checking, it simply passes the name on to the CA client library, which in turn tries to resolve the name on the network. Ultimately, the configuration of your data servers decides what channel names are available.

#### period tag

This mandatory sub-element of a channel defines the sampling period. In case of periodic sampling, this is the period at which the periodic sampling attempts to operate. In case of monitored channels (see next option), this is the estimated rate of change of the channel. The period is specified in units of seconds.

If a channel is listed more than once, for example as part of different groups, the channel will still only be sampled once. The sampling mechanism is determined by maximizing the data rate. If, for example, the channel “X” is once configured for periodic sampling every 30 seconds and once as a monitor with

an estimated period or one second, the channel will in fact be monitored with an estimated period of 1 second.

### scan tag

Either “monitor” or “scan” need to be provided as part of a channel configuration to select the sampling method. True to its name, “scan” selects scanned operation, where the preceding “period” tag determines the sampling period, that is the time between taking samples. As an example, scanned operation with a period of 60 means: Every 60 seconds, the engine will write the most recent value of the channel to the archive.

### monitor tag

As an alternative to the “scan” tag, “monitor” can be used, requesting monitored operation, that is: An attempt is made to store each change received via ChannelAccess. The “period” tag is used to determine the in-memory buffer size of the engine. That means: If samples arrive much more frequently than estimated via the “period” tag, the archive engine might drop samples. (See also “buffer\_reserve”, 3.1.6).

### disable tag

This optional sub-element of a channel turns the channel into a “disabling” channel for the group. Whenever the value of the channel is above zero, sampling of the whole group will be disabled until the channel returns to zero or below zero (see 3.1.8 for additional disconnection).

This is useful for e.g. a group of channels related to power supplies: Whenever the power supply is off, we might want to disable scanning of the power supplies’ voltage and current because those channels will only yield noise. By disabling the sampling based on a “Power Supply is Off” channel, we can avoid storing those values which are of no interest.

The channel which is “disabling” its group will stay enabled. Internal to the archive engine, it obviously needs to stay connected and enabled. How else would it otherwise learn when to re-enable its group? Since it might be of interest to learn which values of the “disabling” channel caused the other channels in the group to be enabled or disabled, its samples are also added to the archive: Disabling channels are never disabled themselves.

**NOTE:** There is no “enabling” feature, meaning: The channel marked as “disable” will disable its group whenever it is above zero. There is no “enable” flag that would enable archiving of a group whenever the flagged channel is above zero. If you want it the other way around, you typically add a CALC record to handle the inversion.

## 3.2 Example for Sampling a Channel

Assume that a channel “fred” emits monitors at 1 Hz. These are some examples for sampling it, and what one can expect to find in the archive as a result.

- “fred 1 Monitor”

Every value sent by fred is archived. Might be a good idea for some channels, but don't try to store every value of every PV of your control system indefinitely unless you are prepared to deal with that amount of data.

Per default, the engine will write every 30 seconds. So it will have to allocate a buffer for about 30 samples, based on our estimate of 1 second between incoming monitors. With the default `buffer.reserve` of 3, it will actually allocate a buffer for 90 values, so we don't lose data when the engine should get delayed in writing. On the other hand, when the computer is terribly busy, we might not receive any more values, either. In any case, the chances of overflowing the data buffer are slim.

- “fred 1”

The engine will sample once per second, and the channel changes once a second, so you might think that you archive every value just as in the previous example. Well, the sample period of the engine running on the host and the scanning of the channel on the CA server are not synchronized, plus there are additional network delays. So you will sometimes miss values whenever more than one sample arrived between the engine's sampling, or get duplicate values whenever no new value arrived between the engine's sampling. Bad idea.

Except: With the default `get.threshold` of 20 seconds, the engine will *not* issue a 'get' every second. It will instead use a monitor, and ignore all data that arrives faster than one second. So this specific case will probably give the exact same result as the previous case!

- “fred 60”

The engine will sample every 60 seconds. This is a very reasonable setup: The channel samples at 1 Hz, so you get frequent updates for the operator interface, but for the archive we only care about a sample per minute and save storage space by ignoring finer detail.

With the default `get.threshold`, that's it. If you raised the threshold, for example to 70 seconds, the engine would use monitors, so it would receive the 1 Hz data and ignore 59 samples each minute. That is probably a waste of network bandwidth. You might, on the other hand, get more consistent time stamps, since the '60 second' period is now based on the time stamps which the IOC sends, and not the host clock.

While this sounds like a neat trick, it might be cleaner to create a channel on the CA server which only updates every 60 seconds, then use “fred 60 Monitor” to store each such sample.

- “fred 60 Monitor”

Probably an error. The engine is instructed to save every incoming monitor. Expecting one value to arrive about every 60 seconds, and assuming a write period of 30 seconds with buffer reserve of 3, the engine will allocate a buffer for 3 values.

In reality, however, about 30 values arrive in every 30 second write cycle. You will see buffer “overrun” errors, because the engine overwrites older samples in its ring buffer with newly arriving samples, and the archive will contain the last 3 samples that happened to be in the buffer at write-to-disk time.

### 3.3 Starting and Stopping

#### 3.3.1 Starting

The ArchiveEngine is a command-line program that displays usage information similar to the following:

USAGE: ArchiveEngine [ Options ] < config-file > < index-file >

Options :

-port <port>	Web server TCP port
-description <text>	description for HTTP display
-log <filename>	write logfile
-nocfg	disable online configuration

Minimally, the engine is therefore started by simply naming the configuration file and the path to the index file, which can be in the local directory:

```
ArchiveEngine engineconfig.xml ./index
```

After collecting some data, the ArchiveEngine will create the specified index file together with data files in the same directory that contains the index file.

#### 3.3.2 “-log” Option

This option causes the ArchiveEngine to create a log file into which all the messages that otherwise only appear on the standard output are copied.

This, however, only applies to messages which the engine writes out. Other code, including the ChannelAccess client library, might produce further messages, which still go to the standard output or error output streams.

#### 3.3.3 “-description” Option

This option allows setting the description string that gets displayed on the main page of the engine’s built-in HTTP server, see section 3.4.



### 3.3.4 “-port” Option

This option configures the TCP port of the engine's HTTP server, again see section 3.4. The default port number is 4812.

If you think this number stinks for a default, you are not too far off base: In Germany, there is a very well known Au-de-Cologne called 4711. Since forty-seven-eleven is therefore easily remembered by anybody from Germany, adding 1 to each 47 and 11 naturally results in an equally easy to remember 4812. No, the archiver development is not funded by the 4711 company.

### 3.3.5 “-nocfg” Option

This option disables the “Config” page of the engine's HTTP server, in case you want to prohibit online changes.

### 3.3.6 The “archive\_active.lock” File

You can only run one ArchiveEngine per directory. This is meant to prevent duplicate startups of the same engine, potentially damaging the index and data files. When running, this lock file is created. The ArchiveEngine will refuse to run if this file already exists. After shutdown, the ArchiveEngine will remove this lock file. If the ArchiveEngine crashes or is not stopped gracefully by the operating system, this lock file will be left behind. You cannot start the ArchiveEngine again until you remove the lock file. This is a reminder for you to check the cause of the improper shutdown and maybe check the data files for corruption.

**NOTE:** This is no 100% dependable check. Data corruption occurs when two engines attempt to write to the same index and data files. The lock file, however, is created in the directory where the ArchiveEngine was started, which could be different from the directory where the data gets written. Example:

```
cd /some/dir
ArchiveEngine -p 7654 engineconfig.xml /my/data/index &

cd /another/dir
ArchiveEngine -p 7655 engineconfig.xml /my/data/index &
```

This is a sure-fire way to corrupt the data in “/my/data/index” and the accompanying data files because two ArchiveEngines are writing to the same archive.

### 3.3.7 More than one ArchiveEngine

You can run multiple ArchiveEngines on the same computer. But they must

1. be in separate directories, writing to different archives. See the preceding discussion of the lock file.

2. use a different TCP port number for the built-in web server

In practice this means that you have to create different directories on the disk, one per ArchiveEngine, and in there run the ArchiveEngines with different "-p <port>" options.

### 3.3.8 Stopping

While the ArchiveEngine can be stopped by pressing "CTRL-C" or using the equivalent "kill" command in Unix, the preferred method is via the built-in web server. Use any web browser and point it to

```
http://<host where engine is running>:<port>/stop
```

Per default, the engine uses 4812, so you could use the following URL to stop that engine on the local computer:

```
http://localhost:4812/stop
```

## 3.4 Engine Web Server

The ArchiveEngine has a built-in web server (HTTP Daemon) for status and configuration information. You can use any web browser to access this web server. You can do that on the computer where the ArchiveEngine is running as well as from other computers, be it a PC or Macintosh or other system as long as that computer can reach the machine that is running the ArchiveEngine via the network. You do *not* need a web server like the Apache web server for Unix or the Internet Information Server for Win32 to use this. The ArchiveEngine *itself* acts as a web server.

You *cannot* view archived data with this mechanism. See the documentation on data retrieval (chapter 4) for that, because the archive engine's HTTPD is meant for access to the status and configuration of the running engine, not for accessing the data samples.

To access the ArchiveEngine's web server, you need to know the Internet name of the machine that is running the ArchiveEngine as well as the TCP port. If you are on the same machine, use "localhost". The port is configured when you start the ArchiveEngine, it defaults to 4812. Then use any web browser and point it to

```
http://<host where engine is running>:<port>
```

Example for an ArchiveEngine running on the local machine with the default port number:

```
http://localhost:4812
```

The start page of the ArchiveEngine web server should look similar to the one shown in Fig. 3.2. By following the links, one can investigate the status of the

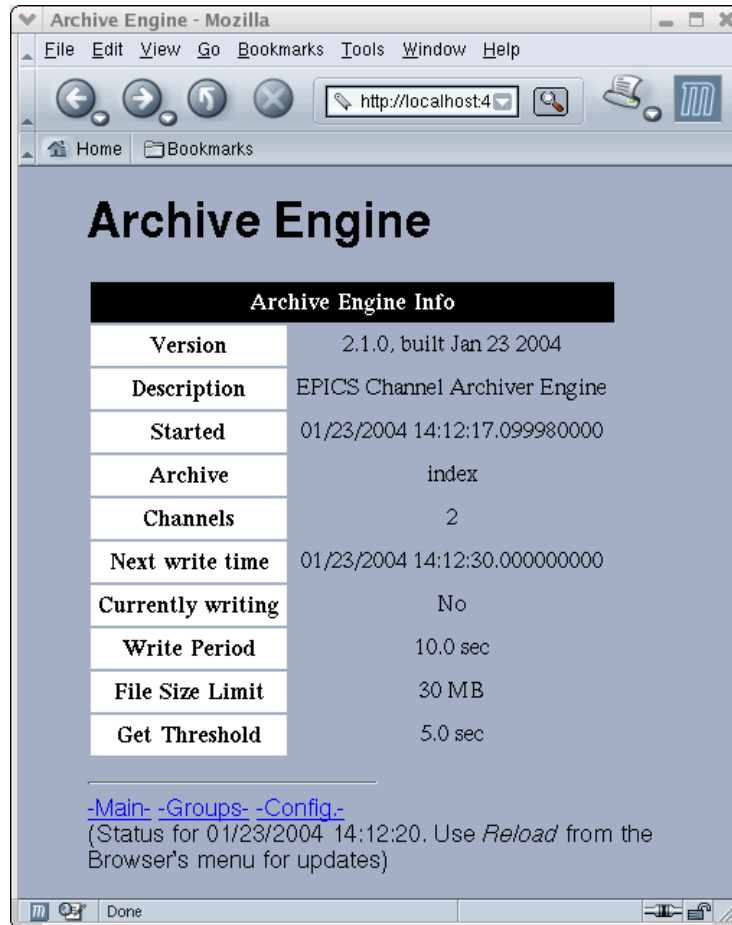


Figure 3.2: Main Page of Archive Engine's HTTPD

groups and channels that the ArchiveEngine is currently handling. The “Config” page allows limited online-reconfiguration. Whenever a new group or channel is added, the engine attempt to write a new config file called `onlineconfig.xml` in the directory where it was started. It is left to the user to decide what to do with this file: Should it replace the original configuration file, so that online changes are preserved? Or should it be ignored, because online changes are only meant to be temporary and with the next run of the engine, the original configuration file will be used?

Note also that the ArchiveEngine does not allow online removal of channels and groups. The scan mechanism of a channel can only be changed towards a higher scan rate or lower period, similar to the handling of multiply defined channels in a configuration file. Refer to the section discussing the “period” tag on page 23.

### 3.5 Threads

The ArchiveEngine uses several threads:

- A main thread that reads the initial configuration and then enters a main loop for the periodic scan lists and writes to the disk.
- The ChannelAccess client library is used in its multi-threaded version. The internals of this are beyond the control of the ArchiveEngine, the total number of CA client threads is unknown.
- The ArchiveEngine's HTTP (web) server runs in a separate thread, with each HTTP client connection again being handled by its own thread. The total number of threads therefore depends on the number of current web clients.

As a result, the total number of threads changes at runtime. Though these internals should not be of interest to end users, this can be confusing especially on older releases of Linux where each thread shows up as a process in the process list. On Linux version 2.2.17-8 for example we get process table entries as shown in Tab. 3.3 for a single ArchiveEngine, connected to four channels served by excas, no current web client. The only hint we get that this is in fact one and the same ArchiveEngine lies in the consecutive process IDs.

PID	TTY	TIME	CMD
29721	pts /5	00:00:00	ArchiveEngine
29722	pts /5	00:00:00	ArchiveEngine
29723	pts /5	00:00:00	ArchiveEngine
29724	pts /5	00:00:00	ArchiveEngine
29725	pts /5	00:00:00	ArchiveEngine
29726	pts /5	00:00:00	ArchiveEngine
29727	pts /5	00:00:00	ArchiveEngine
29728	pts /5	00:00:00	ArchiveEngine

Listing 3.3: Output of Linux 'ps' process list command, see text.

The first conclusion is that one should not be surprised to see multiple ArchiveEngine entries in the process table. The other issue arises when one tries to 'kill' a running ArchiveEngine. Though the preferred method is via the engine's web interface, one can try to send a signal to the first process, the one with the lowest PID.

## Chapter 4

# Data Retrieval

Data retrieval requirements can cover a wide range. One person might be interested in the temperature of a water tank during the last night. For this, it is probably sufficient to retrieve the raw data for the respective channel and plot it. If, on the other hand, we want to look at the same temperature for the last 3 month, the raw data will amount to too many samples and some sort of data reduction or interpolation is helpful. We already mentioned the problems of time stamp correlation that arise when comparing different channels in section 2.6.

The Channel Archiver toolset includes some generic tools that can be used “as is”. While those try to cover many data retrieval requirements, certain requests can only be handled in customized data mining programs (which might be e.g. perl scripts). For this, the archiver offers a network data server. In short, these are your fundamental options:

- Java Archive Client  
This is meant to be *the* data client. Use it to browse the available data, generate plots, export data to spreadsheets, from any computer on the network, by accessing the data server.
- ArchiveExport  
A command-line tool. Less convenient to use, requires direct access to the data files. Use this when the Java Archive Client or network data server are not available.
- Archive Data Server  
Serves data to the Java Archive Client. In addition, you can access the documented XML-RPC protocol of the data server from most programming languages. Use this method for customized data mining programs.
- “Storage” Library  
A C++ library for accessing local data files. Use for specialized C++ code.

## 4.1 Java Archive Client

This tool is meant to be the main data retrieval tool. It provides a graphical user interface to allow data browsing. It is based on Java and hence usable on many operating systems. It accesses the data via the DataServer described in section 4.3, which means that it can access the data via the network. You invoke the java archive client with the URL of the web server that hosts the archive data server:

```
archiveviewer -u \
http://datahost/cgi-bin/xmlrpc/ArchiveDataServer.cgi
```

The interactive GUI shown in Fig. 4.1 then allows you to select one of the archives served by the network data server, investigate the available channels, perform basic calculations on single or multiple channels, export data in spreadsheet format and much more. A separate manual describes the viewer.

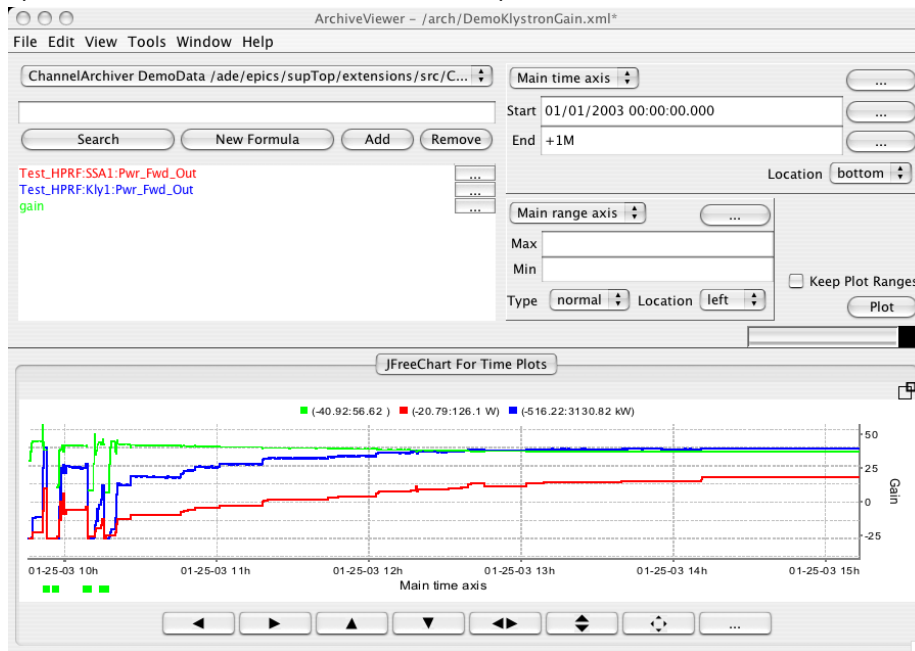


Figure 4.1: Java Archive Client.

## 4.2 ArchiveExport

ArchiveExport is a command-line tool for local tests, i.e. it does *not* connect to the archive data server, but instead requires that you have read access to the index and data files. It is mostly meant for testing.

When invoked without valid arguments, it will display a command description.

USAGE: ArchiveExport [ Options ] <index file> {channel}

Options :

-verbose	Verbose mode
-list	List all channels
-info	Time-range info on channels
-start <time>	Format:
	"mm/dd/yyyy [_hh:mm:ss [. nano-secs]] "
-end <time>	(exclusive)
-text	Include text column for status/severity
-match <reg. exp.>	Channel name pattern
-interpolate <seconds>	interpolate values
-output <file>	output to file
-gnuplot	generate GNUPlot command file
-Gnuplot	generate GNUPlot output for Image

ArchiveExport produces spreadsheet-type output in TAB-separated ASCII text, suitable for import into most spreadsheet programs for further analysis. Per default, ArchiveExport uses Staircase Interpolation to map the data for the requested channels onto matching time stamps, but one can select Linear Interpolation via the "-interpolate" option. When GNUPlot output is selected, the Plot-Binning method is used, where the bin size is determined by the "-interpolate" argument. See section 2.6 on page 11 for details.

Assuming that your current working directory contains an archive index file that is aptly named "index", the following invocation will generate a spreadsheet file "data.txt" with the data of all channels that match the pattern "IOC" for the date of January 27, 2003:

```
ArchiveExport index -m IOC \
    -s "01/27/2003" \
    -e "01/28/2003" >data.txt
```

To plot this in OpenOffice, you could create a new spreadsheet, then use the menu item Insert/Sheet/FromFile, select the file "data.txt" and configure the text import dialog to use "Separated by Tab". You will notice that even though the original text file contains time stamps with nano-second resolution, for example "01/27/2003 23:57:25.579346999", the spreadsheet program might use a default representation of e.g. "01/27/03 23:57 pm". In order to see the full time stamp detail, one needs to reformat those spreadsheet columns with a user-defined format like "MM/DD/YYYY HH:MM:SS.000000000". If you use Microsoft Excel, you might be limited to a format with millisecond resolution: "MM/DD/YYYY HH:MM:SS.000". For graphing the data, the most suitable option is often an "X-Y-Graph", using the first row for labels, with the data series

taken from the columns.

The following call sequence will generate a GNUPlot data file “data” together with a GNUPlot command file “data.plt” and execute it within GNUPlot:

```
ArchiveExport index -m IOC \
                  -s "01/27/2003" \
                  -e "01/28/2003" -o data -gnu
gnuplot
      G N U P L O T
      Version 3.7 patchlevel 3
      ....
gnuplot> load 'data.plt'
```

### 4.3 Data Server

The archiver toolset includes a network data server. By running this data server on a computer that has physical access to your archived data, be it because the data resides on a local disk or an NFS-mapped volume, other machines on the network can get read-access to your data.

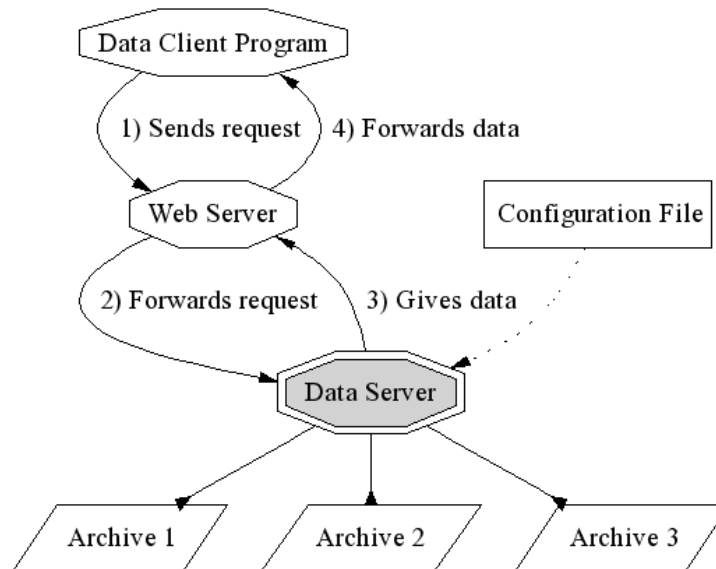


Figure 4.2: Data Server, refer to text.

The data server is hosted by a web server, using the XML-RPC protocol to serve the data. This means that software running on disparate operating systems, running in different environments can access your data over the Internet



via a URL. As an example, your data server might be a Linux machine on a subnet behind a firewall. After you configure the firewall to pass HTTP requests, any Linux, Win32, Macintosh computer both inside or outside of the firewall can access the data from within perl, python or tcl scripts, programs written in C, C++ or Java, actually pretty much any programming language. As illustrated in fig. 4.2, the client program sends its requests to a web server, which forwards it to the data server that is running as a CGI tool under the web server. The dataserver accesses the relevant archives — you determine which ones are available via a configuration file — and returns the data through the web server to the client program. You can configure access security via e.g. the Apache web server configuration.

**NOTE:** The fact that the data server is hosted by a web server, accessible via a URL, does *not* imply that you can use any web browser to retrieve data. You have to use the XML remote procedure call protocol described in section 4.4 on page 40. XML-RPC handles the network connections, data type conversions, and XML-RPC libraries are available for most programming languages. We provide the Java Archive Client (see section 4.6) as a generic, interactive data client.

### 4.3.1 Installation

After successful compilation in ChannelArchiver/XMLRPCServer, you should have a program “XMLRPCServer/O.\$EPICS\_HOST\_ARCH/ArchiveDataServer”. You have to install it as a CGI tool under a web server, passing an environment variable “SERVERCONFIG” to it which points to a configuration file. This means

- You need a web server like Apache running on a computer with access to the archive data.
- You need to know how to start, stop and configure that web server.
- You need to know how to install, configure and possibly troubleshoot CGI tools under that web server.
- You need to create a configuration file for the ArchiveDataServer.

With all but the last point you are very much on your own, because this manual cannot even try to describe all the possible configurations and errors. What follows is only an example setup for the Apache Web Server under Linux and Mac OS X. Your web server, even if it is also a version of Apache, is likely to be quite different.

1. Locate your web server configuration file. This is often a variant of “/etc/httpd/conf/httpd.conf”. For Mandrake 10, check “/etc/httpd/conf/commonhttpd.conf”, for Mac OS X it’s “/etc/httpd/httpd.conf”.

2. After each change to the configuration, you will have to restart the web server. This is often done via “/etc/rc.d/initd/httpd restart” or “/usr/sbin/apachectl restart”.
3. Create a new web directory for the archiver with a CGI sub-directory. This is typically done under /var/www/html, except for Mac OS X, where you would use /Library/WebServer/Documents. Check the “DocumentRoot” variable in your web server configuration file for the correct location and adjust the following accordingly.

```
mkdir /var/www/html/archive
mkdir /var/www/html/archive/cgi
```

Change the permissions of those directories to your liking. Usually, “everybody” needs read and execution access, because the web server will run CGI programs as a low-privileged user. Our main interest here is the CGI “cgi” subdirectory. You can use the “archive” directory to store e.g. the dtd files or web pages with user information that relate to the archive setup at your site.

4. Copy the ArchiveDataServer binary into the cgi directory as “ArchiveDataServer.cgi”. In this example, both the “cgi” directory and the “.cgi” extension of “ArchiveDataServer.cgi” are important, because they identify the binary as a CGI program.
5. Assert that the web server can execute the ArchiveDataServer, that it recognizes it as a CGI tool, by adding the following to the Apache config file:

```
# Check that environment variables are available ,
# assert that this directive is not commented-out.
# Your web server might use a different module name
# or location , in my case it happened to be this :
LoadModule env_module libexec/httpd/mod_env.so
AddModule mod_env.c

# Check that CGI is enabled , i.e. assert that
# these are not commented-out:
LoadModule cgi_module libexec/httpd/mod_cgi.so
AddModule mod_cgi.c

# This tells Apache that ArchiveDataServer.cgi
# is a CGI program because of the .cgi extension:
AddHandler cgi-script .cgi

<Directory /var/www/html/archive>
    Order Allow,Deny
    Allow from All
```

```

</Directory>

# Allow cgi-scripts in the .... /cgi directory:
<Directory /var/www/html/archive/cgi>
    SetEnv EPICS_TS_MIN.WEST 300
    SetEnv LD_LIBRARY_PATH /usr/local/lib:...
    SetEnv SERVERCONFIG \
        /var/www/html/archive/cgi/serverconfig.xml

    # I also like to enable perl-CGI, but that is
    # unrelated to the archiver
    PerlHandler Apache::Registry
    PerlSendHeader On

    # This directive enables CGI for this dir.:
    Options +ExecCGI
</Directory>

```

The LD\_LIBRARY\_PATH needs to list all the directories that contain shared libraries which your ArchiveDataServer.cgi uses. In most cases, this includes the

- install location of the expat and XML-RPC libraries, often /usr/local/lib,
- “lib” subdirectories of EPICS base and EPICS extensions, something like /ade/epics/supTop/base/R3.14.6/lib/linux-x86:...

The SERVERCONFIG variable needs to point to your server configuration file, more about which next. The ExecCGI option is essential to allow CGI functionality. You can skip the Perl configuration for the data server.

### 4.3.2 Configuration

You need to prepare an XML-formatted configuration file for the ArchiveDataServer that follows the DTD from listing 4.1 (see section 7.2.1 on DTD file installation). Note that the ArchiveDataServer might not verify your configuration file, so you are strongly encouraged to use a tool like ‘xmllint’ on Linux to check your configuration against the DTD. Listing 4.2 shows one example serverconfig.xml which lists two archives to be served. Client programs will internally use the respective ‘key’ to access them.

### 4.3.3 Testing, Debugging

Section 4.5 describes a perl client to the network data server. It can be used to see if all the archives you listed in the configuration are actually accessible and so on.

```

<?xml version="1.0" encoding="UTF-8"?>
<!-- DTD for the XML-RPC Data Server Configuration -->
<!ELEMENT serverconfig (archive+)>
<!ELEMENT archive (key,name,path)>
<!ELEMENT key (#PCDATA)>
<!ELEMENT name (#PCDATA)>
<!ELEMENT path (#PCDATA)>

```

Listing 4.1: XML DTD for the Data Server Configuration

```

<?xml version="1.0" encoding="UTF-8"?>
<!DOCTYPE serverconfig SYSTEM "serverconfig.dtd">
<serverconfig>
<archive>
  <key>1</key>
  <name>Vacuum</name>
  <path>/home/data/vac/index</path>
</archive>
<archive>
  <key>2</key>
  <name>RF-LLRF</name>
  <path>/home/data/llrf/index</path>
</archive>
</serverconfig>

```

Listing 4.2: Example Data Server Configuration

In case that client tool gets nothing but errors, debugging of the CGI ArchiveDataServer can be difficult, since one cannot easily peek into the running (or failing to run) program when it is launched by the web server.

The XMLRPCServer directory contains some self-tests in test.sh, where the ArchiveDataServer is run without an actual web server. If test.sh works, your ArchiveDataServer program is fundamentally functional.

If it doesn't work from within your web server, try changing your user ID to 'guest' or 'nobody', somebody similar to the user ID used by the web server when it runs your CGI tool. Set the LD\_LIBRARY\_PATH as you set it for the web server cgi directory, and try test.sh again.

You can also try this to see more of the web server response:

```

telnet my_web_server_host 80
GET /archive/cgi/ArchiveDataServer.cgi HTTP/1.0 <RETURN>
<RETURN>

```

You should see an error message about "XML-RPC Fault: Expected HTTP method POST", indicating that the data server was launched correctly and was

looking for a proper XML-RPC request. If you see only pages of binary-looking garbage, your web server doesn't recognize `ArchiveDataServer.cgi` as a CGI program, and instead of running it, you get a copy of it.

#### 4.3.4 Standalone Data Server

The preferred deployment of the network data server is within a standard web server as described in the previous sections. For experiments, however, there is a way to use a version of the data server which combines the simple "Abyss" web server and the network data server into one standalone program.

Advantages:

- Easier to configure than a standard web server. No `serverconfig.xml`, no `serverconfig.dtd`, no CGI setup trouble. When running "ArchiveDataServer-Standalone", you will see right away if e.g. a shared library is missing, while the "ArchiveDataServer" CGI-plugin to a web server would simply not run for reasons harder to diagnose.
- Ordinary users beyond "root" or "Administrator" can run the standalone data server.

Disadvantages:

- The Abyss HTTPD still requires some configuration.
- Compared to e.g. the Apache web server, there is much less control over who can access the data.
- Currently limited to serving a single archive per running instance of the standalone data server. The 'key' of that archive is fixed to '1' and the 'name' to 'Archive'. Under a standard web server, one can run more than one `ArchiveDataServer` and configure each one to serve multiple archives with selected key and name.

#### 4.3.5 Running ArchiveDataServerStandalone

After successful compilation in `ChannelArchiver/XMLRPCServer`, you will have a program "ArchiveDataServerStandalone".

1. For starters, you can test in the "ChannelArchiver/DemoData" directory, but typically you would copy all "abys\*" files and directories from there into the directory where you intend to run the standalone data server.
2. Edit "abyss.conf" to suit your needs. Most users might only have to adjust the "Port" option, which defaults to 8080, and the "ServerRoot" variable.
3. Run the data server with the abys config file and the path of the archive's index. When inside DemoData, this would be an example:

```
> ArchiveDataServerStandalone abyss.conf index
ArchiveDataServerStandalone Running
Unless your 'abyss.conf' selects
a different port number,
the data should now be available via the XML-RPC URL
http://localhost:8080/RPC2
```

The data is now accessible via XML-RPC by pointing the ArchiveDataClient.pl test tool or the Java ArchiveViewer to the URL

```
http://<hostname>:<port>/RPC2
```

Example:

```
http://localhost:8080/RPC2
```

## 4.4 XML-RPC Protocol

The following is a description of the calls implemented by the archive data server based on the XML-RPC protocol. For details on XML-RPC, including the specifications and examples of how to use it from within C, C++, Java, perl, please refer to <http://www.xmlrpc.com>.

Users of Java should probably utilize the Java archive data client library provided with the ChannelArchiver. Users of other programming environments need to refer to the following.

### 4.4.1 archiver.info

This call returns version information. It will allow future compatibility if clients check for the correct version numbers. In addition, it provides hints on how to decode the values served by this server.

```
{ int32      ver ,
  string     desc ,
  string     how[] ,
  string     stat[] ,
  { int32 num,
    string sevr ,
    bool has_value ,
    bool txt_stat
  }         sevr[]
} = archiver.info()
```

**ver:** Version number. The first released software uses '1'.

**desc:** Cute description that one can print.

**how:** Array of strings with a description of the request methods supported for 'how' in the archiver.values() call described further below in section 4.4.4.

**stat:** Array of strings with a description of the “status” part of the values returned by the archiver.values() call.

**sevr:** Array of structures with a description of the “severity” part of the values returned by the archiver.values() call.

The result is a structure with a numeric “ver” member, a string “desc” member and so on as listed above. Implementations like perl will return a hash with members “ver”, “desc”, etc. The strings in “how” describe the request method for how=0, how=1, and so on. The strings in “stat” describe the enumerated status values, the typical result is shown in table 4.1.

The more important information is in the “sevr” array. It also lists severity numbers (“num”) and their associated string representation (“sevr”). In addition to the alarm severities defined by the EPICS base software, the archiver uses some special severity values which have the “has\_value” property set to false. They identify situations that have no value because the channel was disconnected or the archiver was turned off. Other special severities identify repeat counts which are used in the periodic scanning modes of the archive engine: If the channel did not change for N sample times, a repeat count of N is logged instead of logging the same value N times. In that case, the “txt\_stat” property is set to false because the status (stat) field no longer corresponds to a status string from table 4.1. Instead, it provides the repeat count N. Table 4.2 lists the typical content of the “sevr” array, table 4.3 presents examples for decoding values based on their status and severity information.

Array Element	String
0	NO ALARM
1	READ ALARM
2	WRITE ALARM
3	HIHI ALARM
4	HIGH ALARM
5	LOLO ALARM
6	LOW ALARM
7	STATE ALARM
...	...
17	UDF ALARM
...	...

Table 4.1: Alarm Status Values returned in the “stat” member of archiver.info()

num	sevr	has_value	txt_stat
0	NO_ALARM	true	true
1	MINOR	true	true
2	MAJOR	true	true
3	INVALID	true	true
3968	Est_Repeat	true	false
3856	Repeat	true	false
3904	Disconnected	false	true
3872	Archive_Off	false	true
3848	Archive_Disabled	false	true

Table 4.2: Alarm Severity Values returned in the “sevr” member of archiver.info()

Severity (sevr)	Status (stat)	Value	Example Text
0	0	3.14	“3.14”
1	6	3.14	“3.14 MINOR LOW”
3856	6	3.14	“3.14 Repeat 6”
3904	0	0	“Disconnected”

Table 4.3: Examples for decoding samples returned from the archiver.values() call based on their Status and Severity

#### 4.4.2 archiver.archives

Returns the archives that this data server can access.

```
{ int32 key,
  string name,
  string path }[] = archiver.archives()
```

**key:** A numeric key that is used by the following routines to select the archive.

**name:** A description of the archive that one could e.g. use in a drop-down selector in a GUI application for allowing the user to select an archive.

**path:** The path to the index file, valid on the file system where the data server runs. It might be meaningful to a few users who want to know exactly where the data resides, but it is seldom essential for XML-RPC clients to look at this.

The result is an array of structures with a numeric “key” member and strings “name” and “path”. An example result could be:

```
{ key=1, name="Vacuum", path="/home/data/vac/index" },
{ key=2, name="RF", path="/home/data/RF/index" }
```



So in the following one would then use `key=1` to access vacuum data etc. One can expect the keys to be small, positive numbers, but they are not guaranteed to be consecutive as 1, 2, 3, ... Since the keys could be something like 10, 20, 30 or 1, 17, 42, they are not useful as array indices.

#### 4.4.3 archiver.names

Returns channel names and start/end times. The key must be a valid key obtained from `archiver.keys`. Pattern is a regular expression; if left empty, all names are returned.

**NOTE:** The Time Stamps are *not* the raw EPICS time stamps with 1990 epoch, but use the `time.t` data type based on a 1970 epoch.

```
{string name,
  int32 start_sec ,  int32 start_nano ,
  int32 end_sec ,    int32 end_nano }[]
  = archiver.names(int32 key,  string pattern)
```

The result is an array of structures, one structure per channel that matches the pattern. Start/end gives an idea of the time range that can be found in the archive for that channel. The archive might actually contain entries *after* the reported end time because the index might not be up too date on the end times.

#### 4.4.4 archiver.values

This call returns values from the archive identified by the key for a given list of channel names and a common time range.

```
result = archiver.values(
    int key,
    string name[],
    int32 start_sec ,  int32 start_nano ,
    int32 end_sec ,    int32 end_nano , int32 count ,
    int32 how)
```

The parameter "how" determines how the raw values of the various channels get arranged to meet the requested time range and count. For details on the methods mentioned in here refer to section 2.6 and following, beginning on page 11.

**how = 0 (raw):** Get raw data from archive (see 2.6.1), starting w/ 'start', up to either 'end' time or max. 'count' samples.

**how = 1 (spreadsheet):** Get data that is filled or staircase-interpolated, starting w/ 'start', up to either 'end' time or max. 'count' samples (see 2.6.3). For each channel, the same number of values is returned. The time

stamps of the samples match accross channels, so that one can print the samples for each channel as columns in a spreadsheet. If a spreadsheet cell is empty because the channel does not have any useful value for that point in time, a status/severity of UDF/INVALID is returned (Tables 4.2 and 4.1).

**how = 2 (averaged with 'count')**: Get averaged data from the archive, starting w/ 'start', up to either 'end' time or max. 'count' samples (see 2.6.4). The data is averaged within bins whose size is determined by of (end-start)/count, so you should expect to get close to 'count' values which cover 'start' to 'end'.

**how = 3 (plot binning)**: Uses the plot-binning method based on 'count' bins (see 2.6.5).

**how = 4 (linear)**: Get linearly interpolated data from the archive, starting w/ 'start', up to either 'end' time or max. 'count' samples (see 2.6.4). The data is interpolated onto time slots which are multiples of (end-start)/count, so you should expect to get close to 'count' values which cover 'start' to 'end'.

**how = 5 (averaged)**: Get averaged data from the archive, starting w/ 'start', up to the 'end' time (see 2.6.4). The data is averaged within bins whose size is determined by the 'count'. A value of 60 means: Provide an averaged value every 60 seconds.

Refer to section 2.6 for example results.

The result is an array of structures, one structure per requested channel:

```
result := { string name, meta, int32 type,
            int32 count, values }[]
```

**name**: The channel name. Result[i].name should match name[i] of the request, so this is a waste of electrons, but it's sure convenient to have the name in the result, and we're talking XML-RPC, so forget about the electrons.

**meta**: The meta information for the channel. This is itself a structure with the following entries:

```
meta := { int32 type;
          type==0: string states[],
          type==1: double disp_high,
                  double disp_low,
                  double alarm_high,
                  double alarm_low,
                  double warn_high,
                  double warn_low,
```

```

    int prec, string units
}

```

**type:** Describes the data type of this channel's values:

```

string    0
enum      1 (XML int32)
int       2
double    3

```

**count:** Describes the array size of this channel's values, using 1 for scalar values. Note that even scalar values are returned as an array with one element!

**values:** This is an array where each entry is a structure of the following layout:

```

values := { int32 stat, int32 sevr,
            int32 secs, int32 nano,
            <type> value[] } []

```

The values for status and severity match in part those that the EPICS IOC databases use. The ArchiveEngine simply receives and stores them, they are passed on to the retrieval tools without change. In addition, the archiver toolset uses special severity values to indicate a disconnected channel or the fact that the ArchiveEngine was shut down. For details refer to section 4.4.1 and the tables 4.1, 4.2 and 4.3.

#### 4.4.5 Note about Tiny Numbers and Precision

Some systems deal with small numbers. Vacuum readings often use numbers like  $5 \times 10^{-8}$ . The XML-RPC specification is unfortunately unclear as to how numbers should get serialized and parsed other than specifically prohibiting the exponential notation. The best one could serialize the example number would therefore be "0.00000005".

When the ArchiveDataServer is build with the XML-RPC library for C/C++ as described in the installation section, 7, it will attempt to properly serialize small numbers. When using another XML-RPC library, and this includes the XML-RPC library that your client program uses, small numbers might end up being serialized as zero. The Java Archive Client appears to handle small numbers, as does the "Frontier" XML-RPC library for perl.

A similar issue applies to the precision of floating point numbers: The ArchiveDataServer serializes numbers with a fixed precision that is determined by the XML-RPC library for C/C++. You can patch the library to increase the precision.

## 4.5 Perl Client

The ArchiveDataClient.pl perl script is provided as a starting point for users who want to write perl scripts that access the ArchiveDataServer via XML-RPC. It requires the installation of the “Frontier” XML-RPC library for Perl. The ArchiveDataClient script might also help you test your ArchiveDataServer setup because it offers a command-line interface that is very close to the underlying XML-RPC calls. What follows is an example session:

USAGE: ArchiveDataClient.pl [options] { channel names }

Options:

```
-u URL      : Set the URL of the DataServer
-i          : Show server info
-a          : List archives (name, key, path)
-k key      : Specify archive key.
-l          : List channels
-m pattern  : ... that match a patten
-h how      : 'how' number; retrieval method
-s time     : Start time MM/DD/YYYY HH:MM:SS.NNNNNNNNN
-e time     : End time MM/DD/YYYY HH:MM:SS.NNNNNNNNN
-c count    : Count
```

```
$ URL=http://localhost/cgi-bin/xmlrpc/ArchiveDataServer.cgi
```

```
$ ArchiveDataClient.pl -u $URL -i
```

```
Archive Data Server V 0
```

```
Description:
```

```
Channel Archiver Data Server V0
```

```
Config '/var/www/cgi-bin/xmlrpc/serverconfig.xml'
```

```
Supports how=0 (raw), 1 (spreadsheet),
          2 (interpol/average), 3 (plot-binning)
```

```
$ ArchiveDataClient.pl -u $URL -a
```

```
Archives:
```

```
Key 1: 'Xmtr_2002' in '/home/....2002/index'
```

```
Key 2: 'Xmtr_2003' in '/home/....2003/index'
```

```
$ ArchiveDataClient.pl -u $URL -k 1 -m IOC1:Load
```

```
Channels:
```

```
Channel Test_HPRF:IOC1:Load,
```

```
11/01/2002 17:09:37.616190999
```

```
- 12/31/2002 23:59:45.579346999
```

```
$ ArchiveDataClient.pl -u $URL -k 1 \
```

```
-s "12/01/2002" -e "12/31/2002" \
```

```
-h 2 -c 31 Test_HPRF:IOC1:Load
```

```
Result for channel 'Test_HPRF:IOC1:Load':
```

```
Display : 0.000000 ... 100.000000
```

```
Alarms   : 0.000000 ... 80.000000
```

```
Warnings: 0.000000 ... 50.000000
```

```

Units      : '%' , Precision: 0
Type: 3 , element count 1.
11/30/2002 23:11:36.774193571 11.820585
12/01/2002 22:25:09.677419377 11.846808
12/02/2002 21:38:42.580645183 12.310933
12/03/2002 20:52:15.483870989 0.000000 ARCH_DISCONNECT
12/04/2002 20:05:48.387096795 12.225621
...
12/29/2002 23:58:03.870967751 11.448704

```

## 4.6 “Storage” Library

The INDEXStorage library, a C++ library, provides access to local archives. It is used by the ArchiveEngine to create archives, as well as by the ArchiveExport and Data Server programs for retrieval. In principle, your custom C++ code can use it as well. Read the header files, maybe run “doxygen” with the provided “ChannelArchiver.doxy” configuration to obtain a more readable version.

However, you also need to be aware of its shortcomings: Written primarily to support the archiver tools, its API might change more frequently than the network data server protocol. In addition, it is of course limited to accessing local data files, it cannot query the network data server.

## 4.7 StripTool

StripTool is primarily a Channel Access client for taking “live” samples from CA servers and plotting them over time. For information on the current version, refer to the section on Host Software: Clients under <http://www.aps.anl.gov/epics>. A “History” module allows StripTool to access data from a Channel Archiver network data server.

**NOTE:** This history module is incomplete. At the time, the StripTool API did not provide means for a history data plug-in to create a configuration GUI. There was also no support for asynchronous data retrieval, meaning StripTool freezes while archive data is requested. Use of the history module is discouraged except for testing.

Fig. 4.3 shows an example of Striptool after running for about 20 minutes. It displays those 20 minutes of live data as well as data retrieved from an archive data server, both types of data clearly separated by a gap of about 20 minutes where the archive was no longer and StripTool not yet running. There will always be a small gap as a result of the ArchiveEngine’s buffering between writes to the archive.

For configuration details, refer to the file README\_XMLRPC which is part of the XML-RPC history module for StripTool.

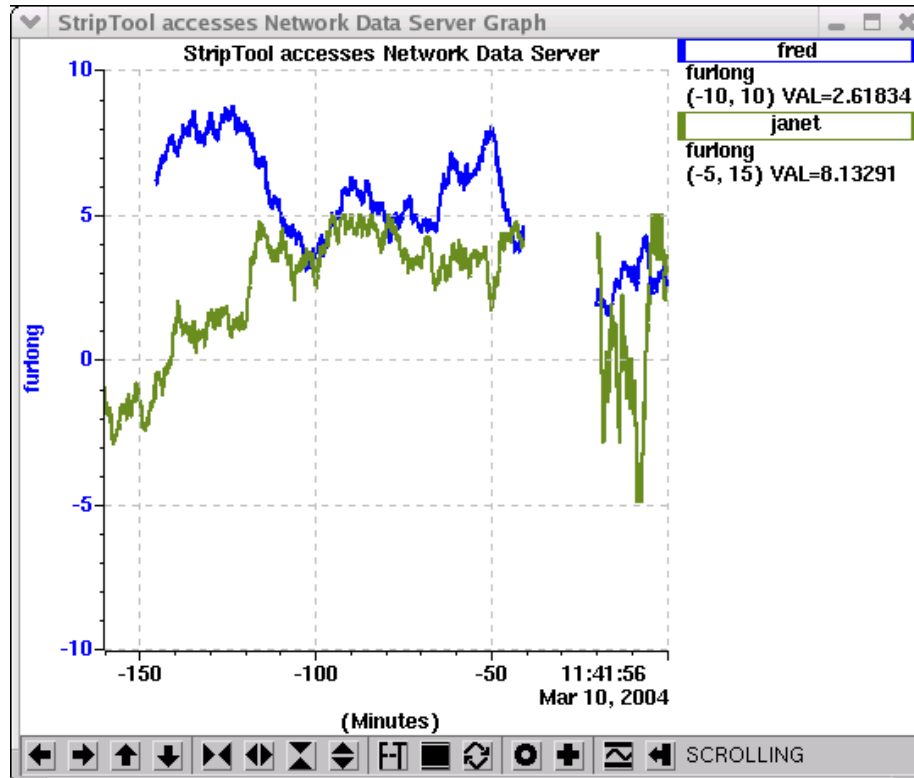


Figure 4.3: StripTool accessing live and archived data.

## 4.8 Matlab

Programs like Matlab or Octave are ideally suited for the more sophisticated analysis of archived data. The ChannelArchiver includes interface code for Matlab and Octave, allowing those two programs to access data from the ChannelArchiver's Network Data Server. Refer to the file ChannelArchiver/Matlab/README for details on building, installing and using those extensions.

**NOTE:** The Matlab/Octave support is experimental. Its use is discouraged except for testing.

Figures 4.4, 4.5, 4.6, 4.7 and 4.8 showcase some examples and provide you with an excuse to print at least this section of the manual on a color printer.

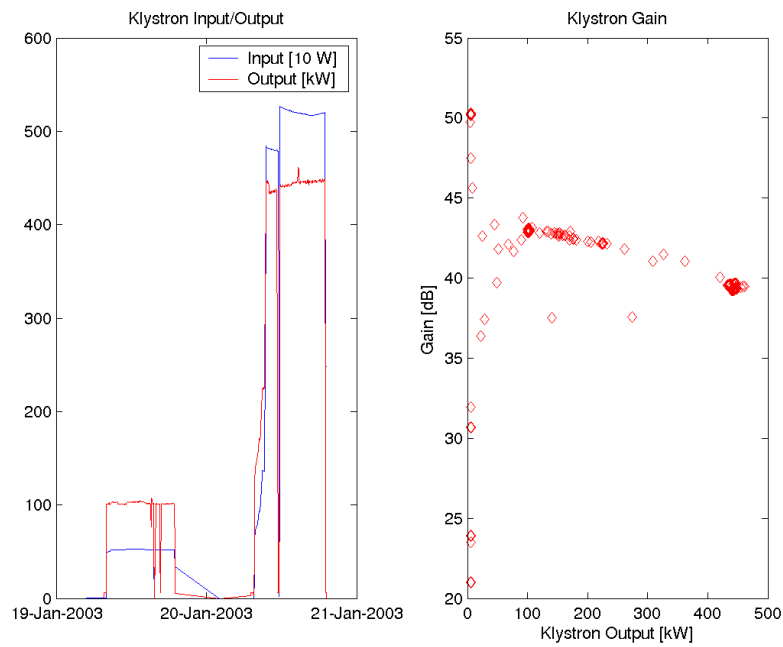


Figure 4.4: Matlab Example: Input and Output power of a Klystron for a two-day test run, combined with a scatter plot of the computed Klystron Gain.

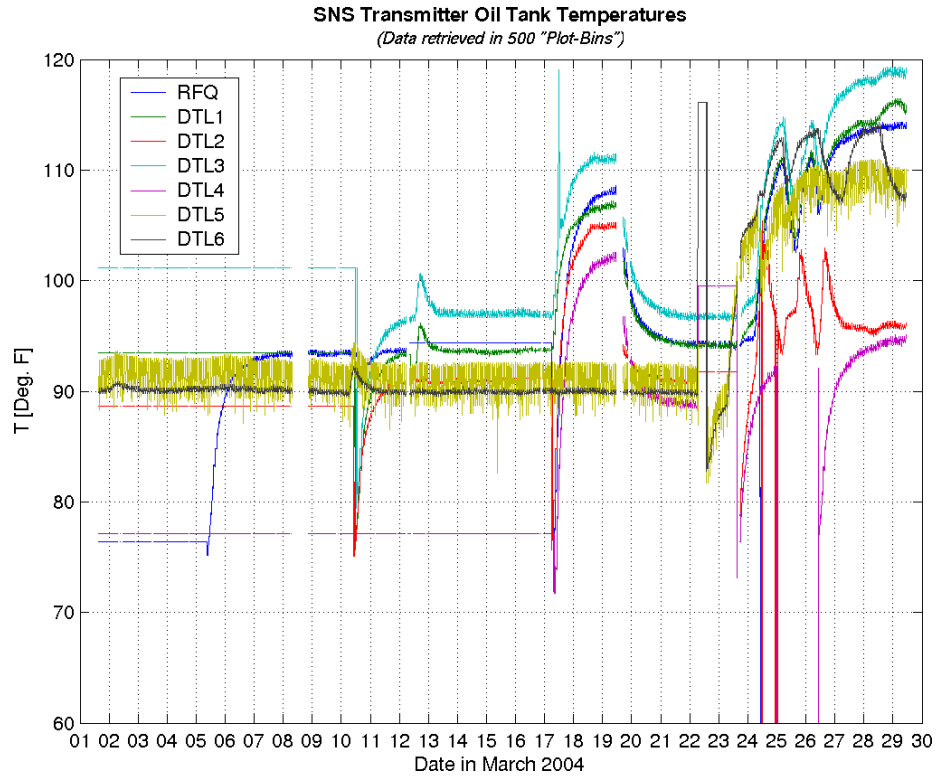


Figure 4.5: Matlab Example: One-month overview of Klystron oil tank temperatures. The Plot-Binning request method as described in section 2.6.5 was used to reduce the amount of data. Interesting features like the noise on the DTL5 signal as well as occasional spikes (which probably result from maintenance work on the oil tank) are preserved.



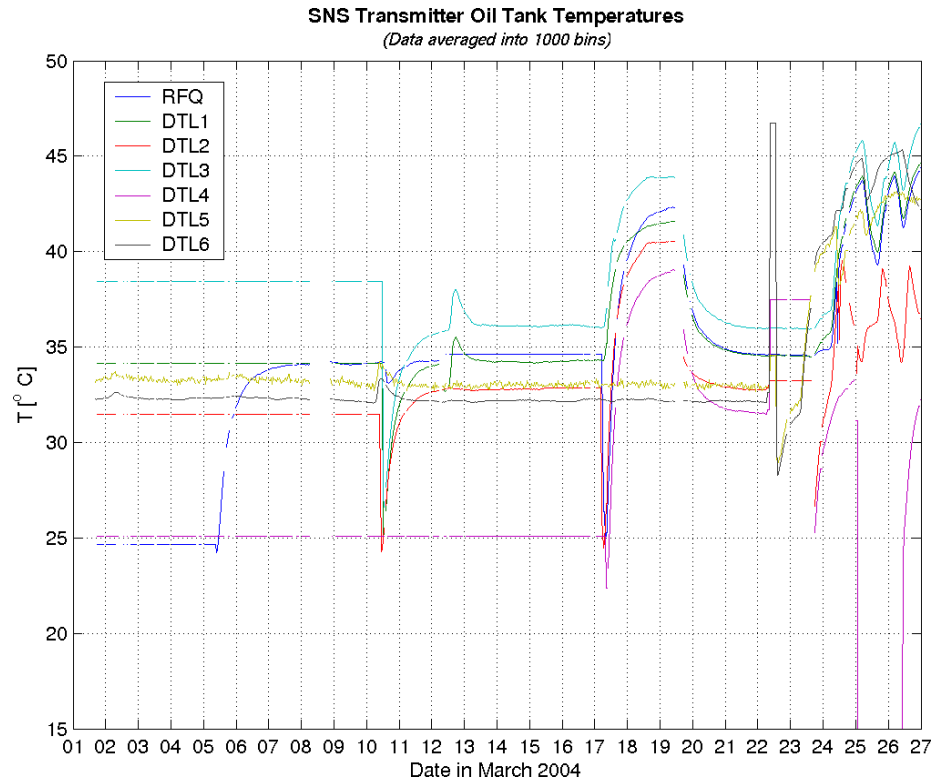


Figure 4.6: Matlab Example: One-month overview of Klystron oil tank temperatures. The raw data was reduced by averaging into 1000 bins as described in section 2.6.4, allowing for easier post-processing, and temperatures were converted to Celsius. Comparison with fig. 4.5 shows how many details can be lost via averaging, so it must be applied with caution.

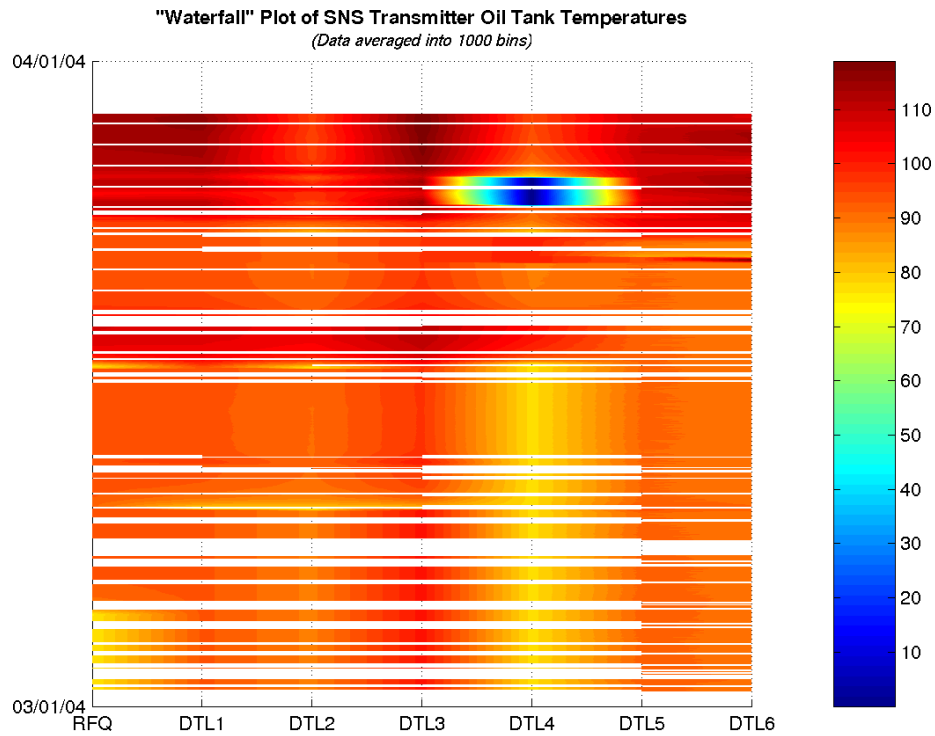


Figure 4.7: Matlab Example: The same data as in 4.6 displayed as a "Waterfall" plot. This type of display hides almost all the detail of the individual channels. Outliers, however, stand out like the possible sensor problem on DTL4, which is why this display method is well suited for an initial investigation of many channels. The example also shows gaps in the data caused by the many times when the archive engine was stopped during the ongoing tests of the new archive engine.

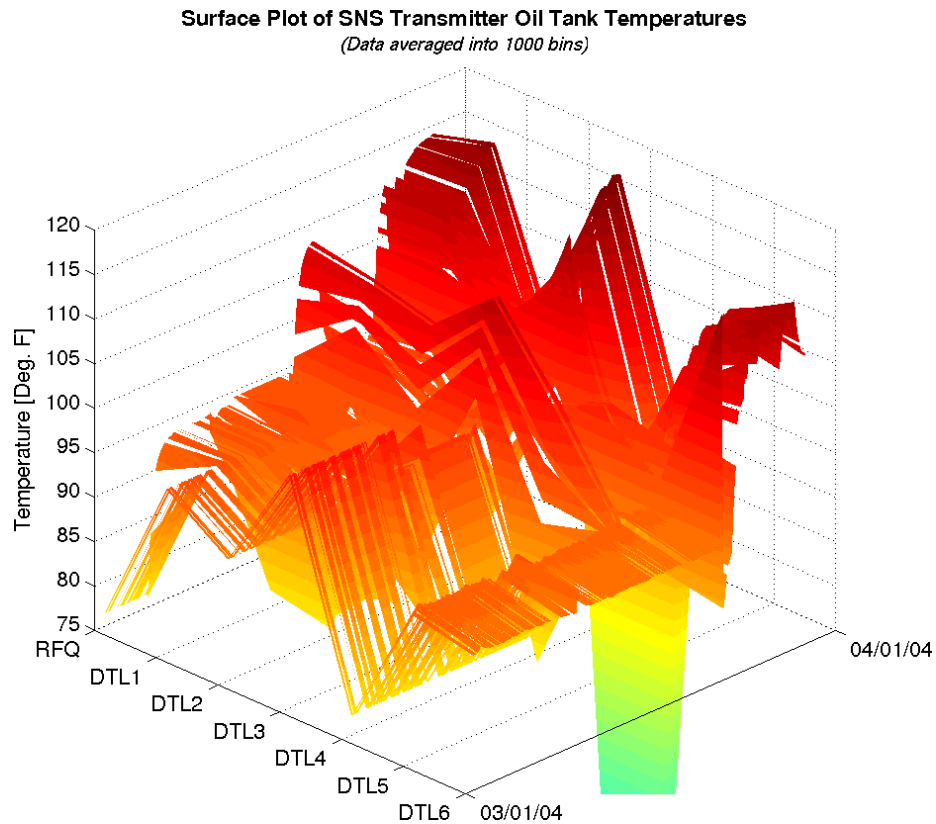


Figure 4.8: Matlab Example: Again the same data as in 4.6 displayed as a surface plot. Tools like Matlab allow the user to rotate this plot in real-time, which might be useful for the inspection of certain channels.

## Chapter 5

# Indices

The archiver supports two types of indices:

- “binary”:  
This is the type of index that the engine creates for its data files. The ArchiveIndexTool, described in [5.1](#), allows the creation of new indices which combine data from existing indices.  
  
A binary index contains information about all the data block for each channel. It offers the best retrieval performance. On the downside, the creation of a binary index can take time, and the size of an index file is limited to 2 GB. When the sub-archives which are accessed via the index change, the index needs to be updated or rebuild.
- “list”:  
This type of index simply lists the sub-archives which one would like to access. Its format is the same as the indexconfig.xml used by the ArchiveIndexTool to create a binary index. When retrieving data, the first sub-archive in the list is used. When the channel is not found, the next sub-archive is used and so on.  
  
A list index takes virtually no time to create, and also requires little disk space. The retrieval is not too bad when only a few sub-archives are listed. It works very well for maybe a dozen entries, but of course degrades with the number of entries.  
  
It will also fail when the sub-archives contain the same channels but for different time ranges.

One should try to use binary indices as long as the size and update times are acceptable. Not available but clearly needed is a third index type which contains the channel names and time ranges of the sub-archives, without growing to the full binary index size which references each data block.

## 5.1 Index Tool

The ArchiveIndexTool is used to create Master Indices by combining multiple indices into a new one. When invoked without valid arguments, it will display a command description similar to this:

```
USAGE: ArchiveIndexTool [Options] <archive list file> \
                                     <output index>
```

Options:

```
-help           Show Help
-M <3-100>      RTree M value
-verbose <level> Show more info
```

The archive list file lists all the sub archives, that is the paths to each sub-archive's index file. It needs to be an XML file conforming to the DTD in listing 5.1 (see section 7.2.1 on DTD file installation). Listing 5.2 provides an example.

```
<?xml version="1.0" encoding="UTF-8"?>
<!-- DTD for the ArchiveIndexTool Configuration -->
<!-- Lists all the indices of archives that -->
<!-- should be combined into the master index. -->
<!ELEMENT indexconfig (archive*)>
<!ELEMENT archive (index)>
<!ELEMENT index (#PCDATA)><!-- path -->
```

Listing 5.1: XML DTD for the Archive Index Tool Configuration

```
<?xml version="1.0" encoding="UTF-8" standalone="no"?>
<!DOCTYPE indexconfig SYSTEM "indexconfig.dtd">
<indexconfig>
  <archive>
    <index>/home/kasemir/xmtrdata/2002/index</index>
  </archive>
  <archive>
    <index>/home/kasemir/xmtrdata/2003/index</index>
  </archive>
</indexconfig>
```

Listing 5.2: Example Archive Index Tool Configuration

We refer to chapter 6 for an example of how to use the ArchiveIndexTool in collaboration with the other Channel Archiver tools.

### 5.1.1 make\_indexconfig.pl

As an aid to creating configuration files for the ArchiveIndexTool, you can use the perl script “make\_indexconfig.pl” that converts a list of index files into the appropriately formatted XML:

USAGE: make\_indexconfig [-d DTD] index { index }

This tool generates a configuration for the ArchiveIndexTool based on a DTD and a list of index files provided via the command line.

### 5.1.2 Internals

The Index Tool allows creation of a master index that covers more than one sub archive. For example, we can create configuration files for the index tool to combine several vacuum sub-archives into one, then do the same for cooling data:

```
cd /data/vacuum
make_indexconfig.pl 2004/02_19/index 2004/02_20/index \
    >indexconfig.xml
cd /data/cooling
make_indexconfig.pl 2004/02_19/index 2004/02_20/index \
    > indexconfig.xml
```

After running ArchiveIndexTool in /data/vacuum and /data/cooling, we will have two new indices. One refers to all the vacuum data, the other to all the cooling data:

```
/data/vacuum/index
/data/cooling/index
```

Note that these are only index files. There are no new data files because the new “master” index files will point to data blocks in the existing data files, e.g. the one under /data/vacuum/2004/02\_19. It is also important to remember that the master index files include the paths to the data files as instructed in the indexconfig.xml files. According to the previous example, /data/vacuum/index was created from /data/vacuum/indexconfig.xml which included the relative path “2004/02\_19/index”. The vacuum master index will therefore point to data files with a relative path like “2004/02\_19/20040219”. Whenever we use “/data/vacuum/index”, the retrieval tools will prepend the path to the index, “/data/vacuum”, to the relative data file path found in the index, for example “2004/02\_19/20040219”, and thus find the data under its full path of e.g. “/data/vacuum/2004/02\_19/20040219”. We cannot move “/data/vacuum/index” to another location like “/tmp/index”. The retrieval tools would then try to access “/tmp/2004/02\_19/20040219” and fail.

Having said that, it *is* possible to generate master indices that use the full, absolute paths to their data files by simply listing the full paths to the subarchives in `indexconfig.xml`. This is, however, not recommended because it will increase the size of the index files simply because the full path names are longer than the relative paths. For the same reason it is advisable to use short path names: When an index file points to many data blocks in many data files, it makes quite some difference if you used a short-named directory tree with paths like `"/data/vac/..."` as opposed to `"/user/data/channel-archiver/data/subsystems/vacuum-system/..."`.

As a second step, we can further combine the master indices for vacuum and cooling data into one index that covers all our data. By creating `"/data/indexconfig.xml"` in which we list `"vacuum/index"` and `"cooling/index"`, and running the `ArchiveIndexTool` in `"/data"`, we create `"/data/index"` which points to all our data. Alternatively, we could have skipped the intermediate indices for vacuum and cooling and created `"/data/indexconfig.xml"` from the beginning like this:

```
cd data
make_indexconfig.pl */2004/*/index \
                    >indexconfig.xml
ArchiveIndexTool -v1 indexconfig index
```

In any case we end up with `"/data/index"` as an index for all our vacuum and cooling data.

## Chapter 6

# Example Setup

The following describes how the archiver toolset is used at the Spallation Neutron Source (SNS). One can of course configure individual engines, start and stop them manually, and do the same with index tools and network data servers. You *should* in fact initially do exactly that in order to become familiar with the pieces of the toolset. Ultimately, however, we try to base as much as possible on a central configuration, and automate the rest via the scripts in the ChannelArchiver/ExampleSetup directory. We distinguish between two types of computers:

- Sampling Machine:  
A computer that runs ArchiveEngine instances.
- Serving Machine:  
A computer that uses the ArchiveIndexTool to create additional binary indices and runs the ArchiveDataServer.

There might be more than one 'sampling' computer as well as more than one 'serving' computer. A single machine might perform both functions, but in general they are different, networked computers, and consequently tools are required to make the data collected on the "sampling" computer available on the "server". One could use NFS, but we prefer secure copy (scp) in order to decouple the computers as best as possible.

We want to be able to move an engine from one computer to another, and still keep an overview. Therefore a file `"/arch/archiveconfig.xml"` describes the complete archive setup: Which engines run where, and how the data gets served. On some computers, for example `ics-srv-archive1`, further subdirectories of `"/arch"` are used to run engines. On another computer, for example `ics-srv-web2`, subdirectories contain data copied from `archive1` so that the data server can serve it.



## 6.1 Setup, archiveconfig.xml

Each computer needs to have the same copy of “/arch/archiveconfig.xml”, and the scripts from the “ExampleSetup” directory of the archiver sources need to be copied into “/arch/scripts”. You might generate and distribute “archiveconfig.xml” manually or use a relational database. People who have used previous releases of the archive toolset might remember the “archiveconfig.csv” file. There is a tool “scripts/convert\_archiveconfig\_to\_xml.pl” to convert that file into an “archiveconfig.xml” skeleton.

```
<?xml version="1.0" encoding="UTF-8" standalone="no"?>
<!DOCTYPE archiveconfig SYSTEM "archiveconfig.dtd">
<archiveconfig>
  <root>/arch</root>

  <serverconfig>/var/www/serverconfig.xml</serverconfig>

  <mailbox>/arch/xfer</mailbox>

  <daemon directory='RF'>
    <run>archive1</run>
    <desc>RF</desc>
    <port>4900</port>
    <dataserver>
      <index type='binary' key='10'>RF</index>
      <host>web2</host>
    </dataserver>
  <engine directory='llrf'>
    <run>archive1</run>
    <desc>LLRF</desc>
    <port>4901</port>
    <restart type='weekly'>We 10:20</restart>
    <dataserver>
      <current_index key='4901'>llrf</current_index>
      <index type='binary'>LLRF data</index>
      <host>web2</host>
    </dataserver>
  </engine>
</daemon>
</archiveconfig>
```

Listing 6.1: archiveconfig.xml

The “archiveconfig.xml” file describes the complete archive layout, using the following elements:

- root tag: Names the root directory, typically “/arch”. This has to be the same directory name on all computers, since they all use the same “archiveconfig.xml”.
- serverconfig tag: Location of the server configuration to be created. See section `update_server.pl`, 6.4.3.
- mailbox tag: Used to communicate from the “sampling” to the “serving” machines.
- daemon tag: Configures an archive daemon and its engines, described in 6.2, as well as how that data should be indexed and served, see 6.4.

## 6.2 Sampling Computer

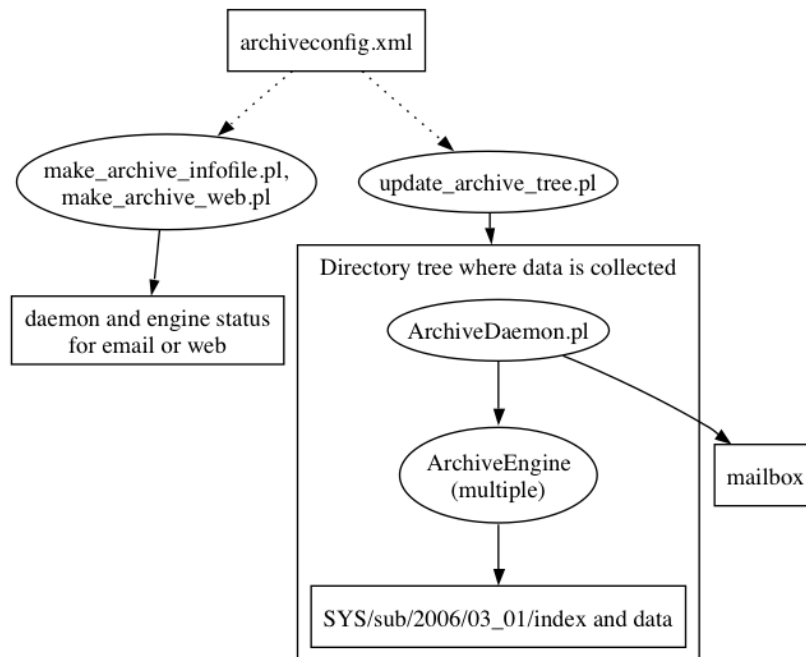


Figure 6.1: Tools used on a sampling computer, refer to text.

Instead of running just one archive engine, it is often desirable to run several. This way, there can be separate engines for each subsystem, possibly

maintained by different people. In addition, periodic restarts, for example once a week, create a separate sub-archive with each restart, thereby limiting the possibility for data loss in case an engine crashes or creates corrupt archives.

For each subsystem, an “ArchiveDaemon” program manages one or more engines, monitors their condition, and performs the periodic restarts. For example, we might run one ‘daemon’ for the Integrated Control System (ICS) and one for the channels related to Radio Frequency (RF). The ICS daemon should maintain one ArchiveEngine for the timing system (tim) and one for the machine protection system (mps), while the RF daemon has one engine for the low-level and one for the high power RF (llrf, hprf).

This separation is somewhat arbitrary. We could have made “llrf” and “hprf” channel groups under one and the same engine. In fact all the above could reside within one engine, and the result would probably be less CPU load compared to the setup with multiple engines. It is, however, advisable to spread the channels over different daemons and engines whenever different people deal with the IOCs that host the channels, so that the engineers can independently configure their archiving. In addition, you want to keep the amount of data collected by each engine within certain bounds, for example: not more than one CD ROM per month, one DVD per year, or whatever you plan to do for data maintenance. You can of course also follow the approach that most sites use in reality: Wait until all disks are full, then panic. In which case, another reason is data safety: You can reduce the damage caused by crashes of one engine to a certain number of channels and the data for the restart period, for example one week.

### 6.2.1 Configuration

The configuration of the sampling computer is primarily done in the <daemon> sections of archiveconfig.xml, described in section 6.2.3.

### 6.2.2 update\_archive\_tree.pl

Initially and after every change to the configuration, the update\_archive\_tree script is used to create the necessary infrastructure. This script reads archiveconfig.xml and create all the subdirectories, daemon config files, and skeleton engine configurations which are meant to run on the local computer. Run it with “-h” to see available options.

**NOTE:** In order to determine what daemons should run on the local host, the host name in the “run tags” is used as a regular expression for the host name. So when specifying that a certain daemon should run on “archive1”:

```
<daemon ...
  <run>archive1 </run>
  ...
```

... that daemon will run on computers called “ics-srv-archive1” as well as “archive1.sns.ornl.gov” etc. The same applies to the host tags which specify where a data server should run.

It is important to note that the host names are used as simple regular expressions, and not in the sense of a name lookup. So “localhost” would *not* work as expected! Instead of matching any host, it will probably match none of your hosts.

For the example from listing 6.1, we would get these subdirectories:

```
RF
RF/llrf
RF/llrf/ASCIIConfig
```

Each directory contains configuration files and scripts explained in the following. Each engine directory also contains an “ASCIIConfig” subdirectory with a script “convert.example.sh” that you might use to create the XML configuration file for the ArchiveEngine from ASCII configuration files, though the engineer responsible for the subsystem is free to use any method of his/her choice as long as the result is a configuration file for the engine that follows the naming convention

*Daemon-Directory / Engine-Dir. / Engine-Dir-group.xml,*

If you want to use the ASCIIConfig directory, check section 10.4 for the format of the ASCII configuration files.

### 6.2.3 ArchiveDaemon

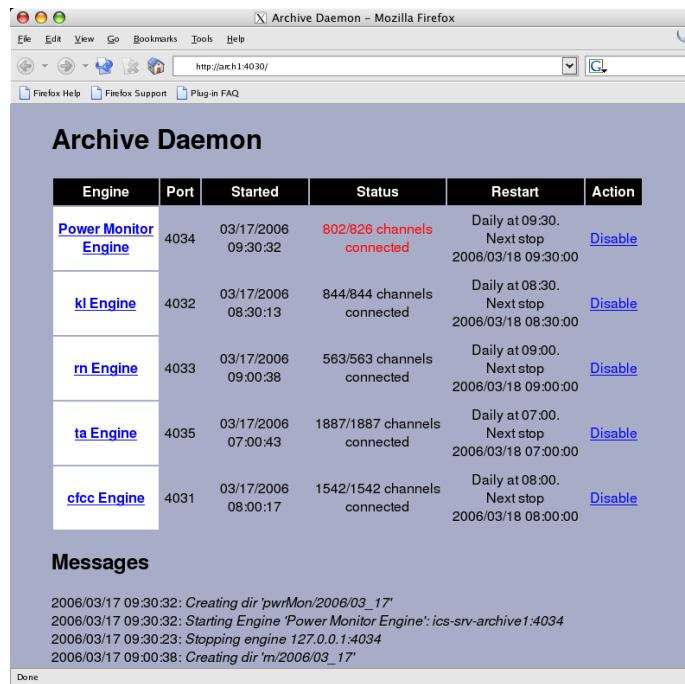
The ArchiveDaemon is a script that automatically starts, monitors and restarts ArchiveEngines on the local host. It is based on ideas by Thomas Birke, who implemented a similar CAManager tool while at LANL. The daemon includes a built-in web server, so by listing several ArchiveEngines that are meant to run on a host in the ArchiveDaemon’s configuration file, one can check the status of all these engines on a single web page as shown in Fig. 6.2.

The daemon will attempt to start any ArchiveEngine that it does not find running. In addition, the daemon can periodically stop and restart ArchiveEngines in order to create e.g. daily sub-archives. Furthermore, it adds information about each completed sub-archive to a mailbox directory, allowing the indexing mechanism to create the necessary indices and update the data server configuration.

Before using the ArchiveDaemon, one should be familiar with the configuration of a single ArchiveEngine (sec. 3), and how to start and stop it manually.

#### Configuration

You will typically *not* directly configure an archive daemon, but instead specify its configuration in the “archiveconfig.xml” file. The “update\_archive\_tree.pl”



The screenshot shows the Archive Daemon web interface. The browser window is titled 'Archive Daemon - Mozilla Firefox' and the address bar shows 'http://arch1.4030/'. The interface has a menu bar (File, Edit, View, Go, Bookmarks, Tools, Help) and a toolbar. Below the browser window, the page title is 'Archive Daemon'. It contains a table with columns: Engine, Port, Started, Status, Restart, and Action. There are five engines listed: Power Monitor Engine, kl Engine, m Engine, ta Engine, and cfcc Engine. Each engine has a 'Disable' link in the Action column. Below the table is a 'Messages' section with a list of log messages.

Engine	Port	Started	Status	Restart	Action
<a href="#">Power Monitor Engine</a>	4034	03/17/2006 09:30:32	802/826 channels connected	Daily at 09:30. Next stop 2006/03/18 09:30:00	<a href="#">Disable</a>
<a href="#">kl Engine</a>	4032	03/17/2006 08:30:13	844/844 channels connected	Daily at 08:30. Next stop 2006/03/18 08:30:00	<a href="#">Disable</a>
<a href="#">m Engine</a>	4033	03/17/2006 09:00:38	563/563 channels connected	Daily at 09:00. Next stop 2006/03/18 09:00:00	<a href="#">Disable</a>
<a href="#">ta Engine</a>	4035	03/17/2006 07:00:43	1887/1887 channels connected	Daily at 07:00. Next stop 2006/03/18 07:00:00	<a href="#">Disable</a>
<a href="#">cfcc Engine</a>	4031	03/17/2006 08:00:17	1542/1542 channels connected	Daily at 08:00. Next stop 2006/03/18 08:00:00	<a href="#">Disable</a>

**Messages**

```

2006/03/17 09:30:32: Creating dir 'pwrMon/2006/03_17'
2006/03/17 09:30:32: Starting Engine 'Power Monitor Engine': ics-srv-archive1:4034
2006/03/17 09:30:23: Stopping engine 127.0.0.1:4034
2006/03/17 09:00:38: Creating dir 'm/2006/03_17'

```

Figure 6.2: Archive Daemon, refer to text.

script will then generate those daemon configurations needed for the local computer, and ignore those meant to run on other machines.

```
<?xml version="1.0" encoding="UTF-8" standalone="no"?>
<!DOCTYPE daemon SYSTEM "ArchiveDaemon.dtd">
<daemon>
  <port>4900</port>
  <mailbox>/arch/xfer</mailbox>
  <engine directory='llrf'>
    <desc>LLRF</desc>
    <port>4901</port>
    <config>llrf-group.xml</config>
    <restart type='weekly'>We 10:20</restart>
    <dataserver><host>web2</host></dataserver>
  </engine>
  <!-- Typically , more entries follow :
  <engine directory='hprf'>
    ...
  </engine>
  -->
</daemon>
```

Listing 6.2: Example Archive Daemon configuration for listing 6.1.

In principle, you can also use the archive daemon by manually creating its configuration, just like you can manually start and stop engines without using the daemon. But in here we assume that you start with a configuration as shown in listing 6.1, which calls for an “RF” daemon to maintain a “llrf” engine on the host “archive1”. So on “archive1”, a subdirectory “/arch/RF” will be created with the daemon configuration shown in listing 6.2, which complies with the DTD from listing 6.3.

The following is an explanation of the daemon-related tags in the “archive-config.xml” file. Compare with the created daemon configuration to see how they get extracted from the global configuration file.

- run tag:

Both the daemon and each engine have this element, which specifies the host name where a daemon and engines should run. The names are regular expressions. In principle, one could think about a setup where RF/llrf runs on “archive1” and RF/hprf runs on “archive2”, and consequently both machines run an “RF” daemon:

```
<daemon directory='RF'>
  <run>archive[12]</run>
  ...
  <engine directory='llrf'>
    <run>archive1</run>
    ...
  <engine directory='hprf'>
    <run>archive2</run>
```

This has not been tested. Typically, a daemon and its engines are all on the same computer.

The generated daemon config file only includes the configuration needed for the local computer. So instead of duplicating `<run>localhost</run>`, it is omitted in the daemon config file.

- desc tag:

A short description.

- port tag:

Both the daemon and each engine have this mandatory element, which determines the port number of the HTTP server. Section 6.2.3 describes the HTTP server of the daemon, while section 3.3.4 explains the engine HTTPD.

**NOTE:** The port numbers used by the Archive Daemons and all the Archive Engines need to be different. You cannot use the same port number more than once per computer.

- mailbox tag:

Directory that the daemon uses to communicate with the data server.

- engine tag:  
Specifies the sub-directory for each engine under a daemon.
  - config tag:  
This element of each engine entry contains the path to the configuration file of the respective ArchiveEngine, see section 3.1. The `update_archive-tree.pl` script creates this entry based on the engine directory from `archive-config.xml` as “*engine--group.xml*”. You can only influence it if you choose to not use `archiveconfig.xml` and instead create the daemon configurations manually.
  - restart tag:  
When provided, it specifies when the daemon should re-start an engine.
    - daily tag:  
The element must contain a time in the format “HH:MM” with 24-hour HH and minutes MM. One example would be “02:00” for a restart at 2 am each morning.
    - weekly tag:  
Weekly is similar to daily, but using an element that contains the day of the week (Mo, Tu, We, Th, Fr, Sa, Su) in addition to the time on that day in 24-hour format, e.g. “We 08:00”. In this example, the daemon will attempt a restart every Wednesday, 8’o clock in the morning.
    - timed tag:  
In this case, the element needs to contain a start/duration time pair in the format “HH:MM/HH:MM”. The first, pre-slash 24-hour time stamp indicates the start time, and the second 24-hour time, trailing the slash, specifies the runtime. The engine will be launched at the requested start time and run for the duration of the runtime. As an example, “08:00/01:00” requests that the daemon starts the engine at 08:00 and stops it after one hour, probably around 09:00, each day.
    - hourly tag:  
The element must contain a number specifying hours: A value of 2.0 will cause a restart every 2 hours. The hourly restart is quite inefficient and primarily meant for testing.
- NOTE:** It is advisable to stagger the restart times of your engines such that they don’t all restart at the same day and time in order to reduce the CPU and network load for the ChannelAccess re-connects. See also `show_restarts.pl` in section 6.2.4.
- dataserver tag:  
Specifies the name of the data server host.



```

<?xml version="1.0" encoding="UTF-8"?>
<!-- DTD for the ArchiveDaemon Configuration -->
<!ELEMENT daemon (port , mailbox? , engine*)>

<!ELEMENT port      (#PCDATA)> <!-- TCP port number      -->
<!ELEMENT mailbox   (#PCDATA)> <!-- /path                  -->

<!ELEMENT engine
      (desc , port , config , restart? , dataserver?)>
<!ATTLIST engine directory CDATA #REQUIRED>

<!ELEMENT desc      (#PCDATA)> <!-- Text                  -->
<!ELEMENT config     (#PCDATA)> <!-- path                  -->

<!ELEMENT restart   (#PCDATA)> <!-- path                  -->
<!ATTLIST restart
      type (weekly|daily|hourly|timed) #REQUIRED>
<!-- weekly  Mo|Tu|...|Su HH:MM
      daily   HH:MM
      hourly  (double) hours
      timed   HH:MM/HH:MM
              (start/duration)
-->

<!ELEMENT dataserver (host?)>
<!ELEMENT host      (#PCDATA)>

```

Listing 6.3: XML DTD for the Archive Daemon Configuration

### Starting, running, stopping daemons and engines

The following scripts, some created by “update\_archive\_tree.pl” in each daemon and engine subdirectory, are used to control the daemons and engines:

- scripts/start\_daemons.pl  
Starts all daemons meant to run on the local computer.
- scripts/stop\_daemons.pl  
Stops all daemons. See “-h” for available options, which includes “-p” to also stop all engines.
- daemon-dir/run-daemon.sh  
Starts the daemon for this subsystem. The daemon will then start all engines which are not already found running.
- daemon-dir/stop-daemon.sh  
Stops the daemon for this subsystem.

**NOTE:** This does not stop the engines, only the daemon.

- `daemon-dir/view-daemon.sh`  
Script to run 'lynx', the text-based web browser, with the URL of the daemon HTTPD.
- `daemon-dir/engine-dir/stop_engine.sh`  
Stop the engine.

**NOTE:** There is no script to start an individual engine, because the daemon will eventually start any engine that's not running. So stopping an engine is just another means of triggering a restart.

Each engine subdirectory contains

- `archive_active.lock`  
Lock file of the ArchiveEngine, exists while an engine is running.
- `YYYY/MM_DD/index`  
A subdirectory for index and data files of the sub-archive. If the ArchiveDaemon is configured to perform daily restarts, the format uses the year, month and day to build the path name.
- `current_index`  
A soft-link to the currently used index.

In addition, there are log files like `ArchiveDaemon.log` and `ArchiveEngine.log` created in the daemon and engine directories which log the diagnostics output of the respective programs.

### Daemon Web Server

You can use any web browser to view the daemon's web pages, which look similar to Fig. 6.2. The URL follows the format

<code>http://host:port</code>
-------------------------------

where "host" is the name of the computer where the ArchiveDaemon is running, and "Port" is the TCP port that was specified in the config file.

**NOTE:** Instead of using Mozilla, Firefox, or any of the other full-blown graphical web browsers, it is often more practical to use "lynx". This text-mode web browser shows the same information, but starts up quicker and uses less CPU and memory resources, which can then be used by archive engines and the operating system's disk cache.

The main daemon web page lists all the archive engines that this daemon controls with their status. The first column also contains links to the individual archive engines. The status shows any of the following:

- “N/M channels connected”

This means the ArchiveEngine is running and responding, telling us that N out of a total of M channels have connected. If not all channels could connect, you might want to follow the link to the individual engine and further down to its channel groups and channels, and determine what channels are missing and why: Is an IOC down on purpose? Is an IOC disconnected because of network problems? Does a channel simply not exist, i.e. the engine's configuration is wrong?

- “Not Running”

This means that the respective ArchiveEngine did not respond when we queried it, and there is no “archive\_active.lck” lock file. This combination usually means that the engine is really not running (except for the Note below about startup).

The first step in debugging would be to check the engine's directory for a log file. Does it indicate why the engine could not start? Then check the daemon's log file. It should list the exact command used to start the engine. You can try that manually to check why it didn't work.

- “Disabled.”

The web interface of the daemon contains a link for each engine that disables the engine. This places a file “DISABLED.txt” in the engine directory and stops the engine. As you might have guessed, the daemon will not attempt to start engines as long as the “DISABLED” file is found. This is a convenient way to temporarily disable an engine without removing it from the daemon's configuration.

- “Unknown. Found lock file”

This means that the respective ArchiveEngine did not respond when we queried it, but there is an “archive\_active.lck” lock file. This could have two reasons. It could mean that the engine is running but it was temporarily unable to respond to the daemon's request. An example would be that the engine is really busy writing and dealing with ChannelAccess, so that its web server had to wait and the daemon timed out. All should be fine again after some time.

If, on the other hand, the situation persists, it usually means that the engine is hung or has crashed, so that it does not respond and the lock file was left behind. See Crashes on page 101.

**NOTE:** The daemon queries the engines only every once in a while and leaves them undisturbed most of the time. Especially after startup, all engines will show up as “Not Running” in the daemon's web page while in fact most of them are already running. Then you will see many disconnected channels while the engines did in fact already connect to all channels. If you are impatient, you can click on the links to the individual engines to get a more up-to-date snapshot of each engine's status.

Instead of using the scripts to stop and ArchiveDaemon, one can directly access the `/stop` URL of the daemon's HTTPD, e.g. `http://localhost:4610/stop`. Similar to the ArchiveEngine's HTTPD, this URL is not accessible by following links on the HTTPD's web pages. You will have to type the URL. This is meant to prevent web robots or a monkey who is sitting in front of the computer and clicking on every link from accidentally stopping the daemon, although it has never been tested with an actual monkey.

Finally, the daemon will respond to the URL `/postal` by stopping every ArchiveEngine controlled by the daemon, followed by stopping itself. "Postal" is an abbreviation for "POstpone STopping the daemon until ALl engines quit". It is not at all related to "going postal", and to our best knowledge no USPS employees have been hurt during the development of this software.

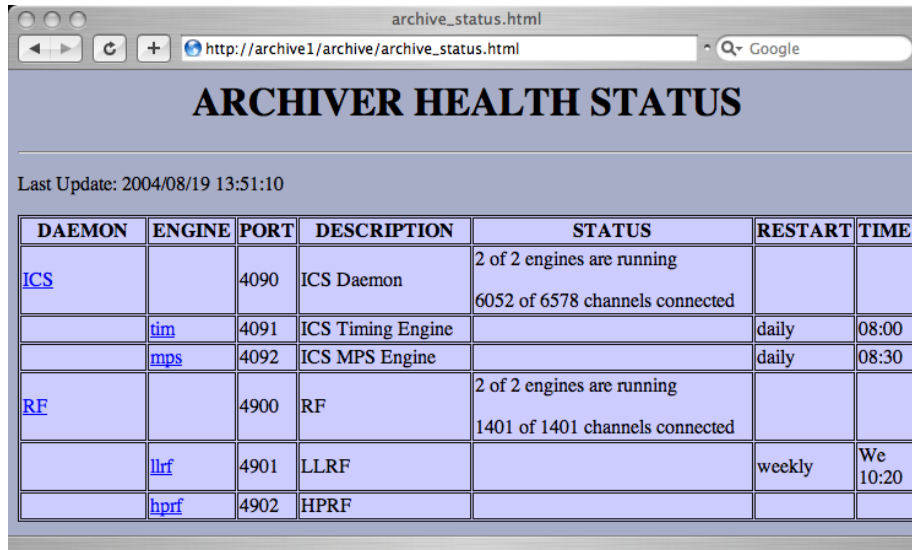
#### 6.2.4 Status Information

The following scripts use the HTTPD of the daemon and engine as well as generic Unix tools to create status overviews. Some can be used in "cron" jobs to periodically update web pages or send regular status emails.

- `make_archive_infofile.pl`  
Creates summary of daemon and engine status, what is running and what is missing, how many channels connected etc. See `-h` option for details.
- `make_archive_web.pl`  
Similar, but creating a web page. Fig. 6.3 shows one example.
- `engine_write_durations.pl`  
Summary of engine performance: How many channels, average values per seconds.
- `show_restarts.pl`  
Creates an overview of restart times, meant as an aid for selecting restart times that either coincide or avoid other restarts based on your preference.
- `show_engines.pl`  
Parses output of `ps` command for engine related information.
- `show_sizes.pl`  
Parses output of `du` for size of sub-archives.

### 6.3 Sub-Archives

Based on the example configuration used in this chapter, the daemon will



DAEMON	ENGINE	PORT	DESCRIPTION	STATUS	RESTART	TIME
<a href="#">ICS</a>		4090	ICS Daemon	2 of 2 engines are running 6052 of 6578 channels connected		
	<a href="#">tim</a>	4091	ICS Timing Engine		daily	08:00
	<a href="#">mps</a>	4092	ICS MPS Engine		daily	08:30
<a href="#">RF</a>		4900	RF	2 of 2 engines are running 1401 of 1401 channels connected		
	<a href="#">llrf</a>	4901	LLRF		weekly	We 10:20
	<a href="#">hprf</a>	4902	HPRF			

Figure 6.3: Example of the archive status web page generated by the `make_archive_web.pl` script.

1. Periodically verify if engines that are supposed to run are actually running.
2. Start missing engines by creating sub-archives named after the current day, e.g. “RF/llrf/2006/03\_22/index” when starting an engine in “RF/llrf”.
3. Stop the llrf engine each Wednesday at 10:20, generate a file in the mailbox directory with information about the “old” sub-archive, the one generated by the engine that was just stopped, and then start a new sub-archive.
4. Maintain a “current\_index” soft link to point to the current sub-archive.

As a result, we create weekly sub-archives for the LLRF like these on the sampling computer “archive1”:

```
...
/arch/RF/llrf/2006/03_08/index
/arch/RF/llrf/2006/03_15/index
/arch/RF/llrf/2006/03_22/index
/arch/RF/llrf/current_index -> 2006/03_22/index
```

There will of course be data files associated with these indices, but for retrieval purposes we identify an archive solely by its index file: We can invoke e.g. ArchiveExport with the path to any of the index files. Unfortunately, whichever index we choose, we will only see data for one week of that one subsystem at a time. The “serving” computer will therefore use additional index files.

## 6.4 Serving Computer

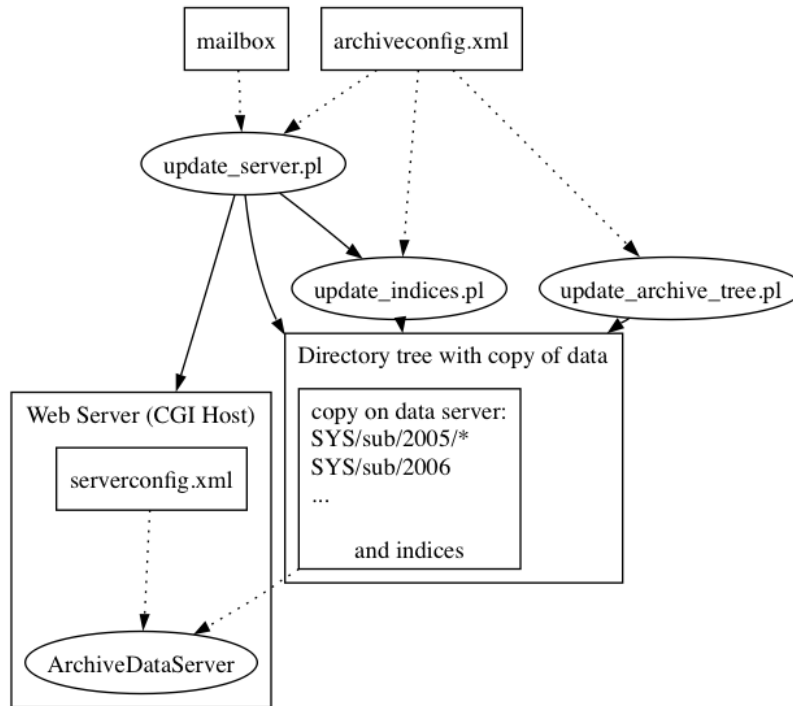


Figure 6.4: Tools used on a serving computer, refer to text.

The serving computer might actually be the same as the sampling machine, or it can be a different computer. In any case, all computers must have access to the same `archiveconfig.xml` file and mailbox directory. The following describes the scenario used at the SNS with different computers and no writable NFS share between the affected machines. The idea is to copy the sub-archives over to the serving computer, and create further indices. For the data example from the previous section, we will get the following on the serving computer “web2”:

```

...
/arch/RF/llrf/2006/03_08/index
/arch/RF/llrf/2006/03_15/index
/arch/RF/llrf/master_index
/arch/RF/llrf/current_index
    -> /archive1/arch/RF/llrf/current_index
/arch/RF/master_index
/arch/all.xml

```

```
/arch/current.xml
```

All sub-archives which are closed, i.e. no longer updated by a running engine, have been copied from the sampling computer, where they could now be deleted. Depending on the configuration, additional indices are maintained for all the copied data. In this example, one binary “master\_index” is generated for the weekly llrf engine data, another one for the RF, assuming there are more engines under the RF daemon to make this worthwhile. The `update_indices.pl` script which creates these indices also adds the list indices “all.xml” and “current.xml”, see section 6.4.4.

The daemon on the sampling computer provides a “current\_index” soft link to the current sub-archive index. At the SNS, the serving computer “web2” is a separate machine with a read-only NFS mount “/archive1” to “archive1:/arch”. A manually created soft link from /arch/RF... to the NFS share allows access to the current index in the familiar place, even though read access will of course follow the first soft link to the “current\_index” on the NFS share, then on the actual current index.

### 6.4.1 Configuration

Of primary interest to the serving computer are the `<dataserver>` sections of `archiveconfig.xml`, which are allowed for each daemon and engine entry:

```
<dataserver>
  <current_index key='4901'>llrf </current_index>
  <index type='binary' key='4902'>LLRF data</index>
  <host>web2</host>
</dataserver>
```

- `current_index` tag:  
This option is only allowed for engine data server entries. When provided, the “current\_index” link created by the archive daemon for this engine will be served by the data server with the given key and name.

This of course requires the “serving” computer to have access to the `current_index`, which resides on the “sampling” machine. The soft link used for this purpose at the SNS was described in the previous section.

- `index` tag:  
Configures the type of index to create as “list” or “binary”. For an engine, the index covers every data found under the engine directory, typically combining the sub-archives from daily or weekly restarts into one `master_index`.

For a daemon, the index combines the `master_indices` of engines under the daemon into one daemon-level `master_index`. This requires that there are such engine indices, which need to be configured for each engine entry.

If a key is provided, the index is added to the data server configuration. It might make sense to only provide a key for the daemon-level index, while the engine-level indices are only used as intermediate steps in constructing the daemon index.

- **host tag:**  
The host where the data server should run. Dataserver entries where the host element, used as a regular expression, does not match the local hostname, are ignored.

In addition to the indices specified in `<dataserver>` sections of the archive configuration, two more will be created by the `update_indices.pl` script.

### 6.4.2 `send_mailbox.pl`

In the absence of a writable NFS share for the mailbox directory, this script is run by a cron-job to send the contents of the mailbox directory to other computers. For now, this means: It is periodically invoked on “sampling” computers to send the current mailbox content to the “serving” machine. See command-line help for details.

### 6.4.3 `update_server.pl`

This script should be invoked periodically by a cron-job. It checks the mailbox directory for information about new data on a “sampling” computer, compares with the `archiveconfig.xml` information to decide which of that data should be served on this machine.

It uses `secure-copy` (`scp`) to pull new sub-archives onto this computer, optionally with md5 checksum, and finally invokes `update_indices.pl`.

### 6.4.4 `update_indices.pl`

Reads `archiveconfig.xml` and creates an `indexconfig.xml` for each engine and daemon directory that has a `<dataserver>...<host>` entry for the local machine. Where binary indices were requested, the `ArchiveIndexTool` is invoked.

Next, list indices “`current.xml`” and “`all.xml`” are created, containing all the “`current_index`” entries from the configuration respectively the remaining index entries. Finally, the `serverconfig.xml` is updated, starting with entries for “`all.xml`” (key1) and “`current.xml`” (key 2), followed by the indices listed in `archiveconfig.xml`.



## 6.5 Common Tasks

### 6.5.1 Modify Engine's Request Files

Locate your archive engine directory and the engine configuration file, for example `/arch/RF/llrf/llrf-group.xml` for the “llrf” engine maintained by the “RF” daemon. Modify or re-create that configuration. This is often done via a conversion script in `/arch/RF/llrf/ASCIIConfig`. If you used another method to create the engine configuration, this is a good time to remember what you did.

Then, to actually use that new config file, the engine needs to restart. We could simply wait for the next scheduled restart, in our example the next Wednesday, 10:20. Alternatively, we can run the `llrf/stop-engine.sh` script. Watch the RF daemon, for example via `/arch/RF/view-daemon.sh`. Within a few minutes, it ought to detect that the engine had stopped and then restart it.

### 6.5.2 Add Engine or Daemon

Edit `archiveconfig.xml` to define the new engine under an existing demon. Or add a line for a new daemon, then add the new engine under it. Unless you feel lucky today, use “`xmllint -valid archiveconfig.xml`” to assert that you preserved the basic well-formedness of the XML document.

Invoke “`scripts/update_archive_tree.pl`”. Per default, it will re-create all daemon and engine directories, so you might want to use the “-s” option to limit its operation to the new or modified subsystem.

In case the daemon was already running, it won't learn about the new engine unless you restart it. So run the “`stop-daemon.sh`” script followed by “`run-daemon.sh`” in the daemon directory to restart the daemon, which will then start any newly added engines.

At the SNS, the data server on web2 also needs a manually created “`/arch/daemon/engine/current_index`” soft link for newly added engines which points to the “`current_index`” on the read-only NFS share.

### 6.5.3 I want to stop a Daemon

Run `stop-daemon.sh`.

### 6.5.4 A Daemon isn't running

Run `start-daemon.sh` in the daemon directory. If the daemon keeps quitting, check its log file for clues.

### 6.5.5 An Engine isn't running

All engines should be started by the daemon process. There is no script for starting an individual engine, and one should not start one manually.

Check if the daemon which is supposed to start the engine is actually running and knows about the engine (“view-daemon.sh”). Does the daemon need a restart to learn about a new engine?

Otherwise, check the process list to assert that the engine in question is really not running (UNIX: “ps -aux”). If the engine is actually running but not responding via its HTTPD, check its CPU usage and the dates and sizes of the files in the sub-archive that the engine is supposed to write. Is it adding to the data files? It might respond again after a few minutes, although this of course indicates that your computer is overloaded and you have to reevaluate how much you can archive on that machine. If all else fails, remove the engine process.

Check the log file of the engine, generated in the engine subdirectory, for any clues. If you are convinced that the engine is not running, but find an “archive\_active.lock” lock file in the engine directory, remove it. Now the daemon should be able to start your engine.

### 6.5.6 Re-build Indices

Whenever you add or remove a sub-archive, the indices for that engine and daemon (indexconfig.xml, maybe also binary master\_index) become obsolete: They might still list data in a sub-archive that you removed, or not yet include a new sub-archive.

In case you know that the only change is *added* data, a run of the update\_indices.pl script should suffice. But whenever data has been removed, rearranged, or you suspect a broken master index, because you can retrieve data from the individual sub-archives but not via the master index, the recipe is as follows:

- Delete the indexconfig.xml and master\_index files that refer to the data. For example, when you rearranged data in RF/llrf/2006, you need to delete the indexconfig.xml and master\_index files in RF/llrf and RF.
- Invoke update\_indices.pl, or wait until update\_server.pl does this for you, triggered by a cron job.

### 6.5.7 Remove Channels, Data

As for removing data from within one sub-archive, see 8.4.1. You can remove a whole sub-archive, for example a subdirectory “daemon/engine/2006/01\_10”, by deleting that directory and then rebuilding all affected indices.

### 6.5.8 More Data Management

See the description of the ArchiveDataTool in section 8.4.

## Chapter 7

# Setup, Installation

In general, the archiver toolset should build on Unix-type operating systems that are supported by EPICS base 3.14. Specific instructions for Linux (RedHat and Mandrake) as well as Apple Mac OS X follow.

### 7.1 Compilation

The archiver tools use the EPICS build system as for example described in the “EPICS: Input/Output Controller Application Developer’s Guide” for Release 3.14.4. This means you need the following prerequisites:

1. EPICS Base R3.14.4 (or later) needs to be built and installed.  
Unless you are running Linux, this might require getting a compiler, perl and gnumake.
2. An EPICS extensions setup: “configure” directory with the RELEASE file appropriately configured to point to your EPICS base installation.
3. ChannelArchiver sources, placed in the “src” subdirectory of your EPICS extensions directory tree.

All the above is either pretty obvious to those who know it already or beyond this manual to explain, in which case we have to refer you to the EPICS web site <http://www.aps.anl.gov/epics>.

*You need to read and maybe adjust Tools/ToolsConfig.h and LibIO/Archiver-Config.h to suit your needs. The most important parameter in there is “CONVERSION\_REQUIRED”. Assert that it is correctly configured! If you use the wrong setting for CONVERSION\_REQUIRED, you might not notice any problems for some time, but your data files will be invalid when transferred to another operating system; your network data server will only provide garbage data to network clients.*

One good thing to do for a sanity check is to run the ArchiveExport tool on the data provided in the DemoData subdirectory. Try to retrieve the PV “DoublePV”. You should see values in the range of 0...10 with time stamps in recent years. You will not see the exact time stamps shown in the example, unless you reside in the “Eastern” US time zone (UTC-5), as explained in section 2.5:

```
ArchiveExport DemoData/index DoublePV -text
# Generated by ArchiveExport 2.1.4
# Method: Raw Data

# Time                                DoublePV [a.u.]
03/05/2004 18:54:41.742248000         2.7
03/05/2004 18:57:50.543731200         3
03/05/2004 18:57:50.563760000         3.5
03/05/2004 18:57:50.583788800         3.9
...
```

You will of course only be able to test ArchiveExport after you have successfully built the archiver toolset, so read on. In addition to the configuration of the archiver sources themselves, some open source tools and libraries are required which are listed in the following subsections. They are included in the “ThirdParty” subdirectory of the archiver sources.

With all the required “ThirdParty” components in place, building the ChannelArchiver should be reduced to typing “make” in the ChannelArchiver source directory, followed by the optional setup of the Matlab/octave glue code which is described in a README file in the Matlab subdirectory of the ChannelArchiver sources.

### 7.1.1 XML-RPC

The archiver’s network data server uses XML-RPC. The XML-RPC Setup requires the installation of at least the C/C++ support. The Java archive data client includes the JAR files for XML-RPC access from Java. If you want to access the archive data server from e.g. perl, this would mean you have to install XML-RPC support for perl, too (one of which is included in the ThirdParty subdirectory of the archiver sources).

For C and C++, we use xmlrpc-c from <http://xmlrpc-c.sourceforge.net>. The Makefiles in ChannelArchiver/XMLRPCServer assume this to be installed in the default location, that is under /usr/local.

With RedHat 6.2, xmlrpc-c compiled out of the box. With everything else, it has been a varying pain in the eyebrow. Under RedHat 9.0 and Mandrake 10, it ran into a compile-time error that could be fixed by un-commenting “using namespace std;” in the header file which reported the error. Under Fedora Core 2 and Mandrake 10, there were additional errors that can be fixed by replacing includes for “strstream.h” with “strstream” in the affected files. Both RedHat AS or ES and Mandrake 10 needed additional packages, see below.

**NOTE:** The default serialization code in xmlrpc-c-0.9.9 will serialize sufficiently small numbers as zero, see details in section 4.4.5. The “ThirdParty” subdirectory contains the sources for xmlrpc-c-0.9.9 together with a patch files that corrects the “using namespace std;” and the serialization issue as well as the “strstream” problem. Under RedHat 9 respectively Mandrake 10, the complete installation would then look as follows:

```
cd ChannelArchiver/ThirdParty
tar vzxvf xmlrpc-c-0.9.9.tar.gz
cd xmlrpc-c-0.9.9
./configure
# Patch for serialization and name spaces
patch -p1 <../patch_xmlrpc-c-0.9.9
# Fedora and Mandrake 10 patch for strstream
# SKIP THIS PATCH ON REDHAT 9!
patch -p1 <../patch_xmlrpc-c-0.9.9_strstream
make
su
make install
```

Since the first patch also affects Makefiles which are created as a result of “configure”, you might prefer to read that patch file and apply the changes manually when you’re not on RedHat 9 or Mandrake 10.

For RedHat Enterprise Linux Workstation 4 (gcc 3.4.4), I needed to delete an empty “default:” tag in a case statement in line 103 of src/validatee.c, because the compiler considered it an error.

For Mac OS X, a version with patched configure scripts [6] that also includes the “small numbers” patch mentioned above is included in a different tar file:

```
tar vzxvf xmlrpc-c-0.9.10_darwin.tgz
cd xmlrpc-c-0.9.10
./configure
make
sudo make install
```

The XML-RPC library depends on other packages. *The “configure” step will report errors in case those are missing.* For RedHat, those packages are usually included in the distribution but might not have been installed by default, so look for the RPMs on your RedHat CDs. The following are also provided in the ThirdParty subdirectory:

### w3c-libwww

This is needed to compile the XML-RPC library. For Redhat or Fedora, you can instead install the libwww and libwww-devel RPMs that come with the OS. For Mandrake 10, you can use the w3c-libwww sources as is:

```
cd ChannelArchiver/ThirdParty
tar vzxw w3c-libwww-5.4.0.tgz
cd w3c-libwww-5.4.0
./configure
make
su
make install
```

Mac OS X requires a patch to the configure script [6]:

```
cd w3c-libwww-5.4.0
patch <../w3c-libwww-5.4.0_osx_patch
./configure --enable-shared --enable-static \
    --with-zlib --with-ssl
make
```

### 7.1.2 Xerces XML Library

The Xerces library is used to parse the XML configuration files of the Archive-Engine, IndexTool, and the network data server. See “Xerces C++” under

<http://xml.apache.org/index.html>

or try this direct link:

<http://xml.apache.org/xerces-c/index.html>

to get the sources. The Makefiles assume this to be installed under /usr/local. Example installation under RedHat:

```
tar vzxw xerces-c-current.tar.gz
cd xerces-c-src2_4_0
export XERCE_ROOT='pwd'
cd $XERCE_ROOT/src/xercesc
autoconf
./runConfigure --platform --gcc --g++ \
    --minmem --nsocket \
    --tnative --rpthread \
    --P /usr/local

make
su
make install
```

For Mac OS X the runConfigure looks like this:

```
./runConfigure -p macosx -n native -P /usr/local
```

Newer compilers (like gcc 3.4.4 for RedHat WS 4, or gcc 4.0 as used on Mac OS 10.4) need this patch:

```
Add
    #include <xercesc/framework/MemoryManager.hpp>
to
    src/xercesc/util/RefArrayOf.hpp
```

### 7.1.3 Expat

As an inferior alternative to Xerces, the Expat library is supported after changing Tools/FUX.h. Expat comes with e.g. RedHat 9, otherwise see

<http://expat.sourceforge.net>.

Expat might be a little faster and easier to install, but it does not offer validation, so it will be up to you to assert that all XML configuration files are 100% perfect.

### 7.1.4 XML-Simple

This XML library for perl is used by the ArchiveDaemon. It is available from

<http://www.cpan.org>.

```
tar vzxvf XML-Simple-2.09.tar.gz
cd XML-Simple-2.09
perl Makefile.PL
su
make install
```

### 7.1.5 Frontier

Frontier is an XML-RPC library for perl. It is used for tests of the XML-RPC Archive Data Server, including the ArchiveDataClient.pl test script. Under Red-Hat 9.0, Fedora 2 and Mandrake 10, it was sufficient to install Frontier-RPC-0.07b4 like this:

```
tar vzxvf Frontier-RPC-0.07b4.tar.gz
cd Frontier-RPC-0.07b4
perl Makefile.PL
sudo make install
```

RedHat 6.2 was hopeless because many of the required perl packages were missing.

Users who want to experiment with the perl client, but lack the privilege to install in /usr/local can install a private copy like this:

```
...  
perl Makefile.PL PREFIX=~  
make install  
export PERL5LIB=~ / lib / perl5 / site_perl / 5.8.0
```

You might have to adjust the PERL5LIB settings to reflect your perl version.

## 7.2 Installation

There are no specific installation procedures for the ArchiveEngine, ArchiveExport, and most other Channel Archiver components. The binaries for them end up in the standard EPICS extension directories, which should therefore be included in the search path. If the archiver libraries were build as shared libraries, most Unix systems will require the extensions' lib directory be added to the LD\_LIBRARY\_PATH. The same applies to other helper libraries like Xerces that might be in the form of shared libraries.

The usage of the ArchiveEngine and other archiver tools might require configuration files, the format of which is described as part of the tool's dedicated section in this manual.

The ArchiveDataServer requires integration with your web server. The process is exemplified in the Data Server chapter starting on page 34.

### 7.2.1 DTD Files

Many of the configuration files use XML, and document type definitions are provided in the form of DTD files (See ArchiveDataServer configuration in 4.1, ArchiveEngine config. in 3.1, ArchiveDaemon in 6.3, ArchiveIndexTool config. in 5.1). You are *strongly* encouraged to reference these DTD files in all your XML files, and to use the validating Xerces XML library, so that all your XML get validated while the ChannelArchiver tools use them. This means that your XML files need to include a DOCTYPE declaration that points to the location of the respective DTD file. In practice, there are at least three ways to accomplish this:

1. Whereever you create an XML file, you copy the DTD into the same directory. Then you can refer to the DTD like this:

```
<!DOCTYPE engineconfig SYSTEM "engineconfig.dtd">
```

Not the best idea because you need multiple copies of the DTD and this is hard to maintain in case the DTD gets updated.

2. You install the DTD files in a common location in the local file system, e.g. in "/arch". Then you can refer to the DTD like this:



```
<!DOCTYPE engineconfig  
SYSTEM "/archr/engineconfig.dtd">
```

This setup is in use at the SNS. If you use the archive tools on more than one computer, each machine might require a copy of the DTDs.

3. You install the DTD files in the directory tree of a web server that is accessible to all your computers. Then you can refer to the DTD via a URL like this:

```
<!DOCTYPE engineconfig  
SYSTEM "http://webserver/archdtd/engineconfig.dtd">
```

This centralizes the installation, but you now have the added dependency on the web server.

## Chapter 8

# Data Format Details

### 8.1 Binary Index Files, RTree

A binary index file contains a list of all the channels in an archive, and for each channel it contains information about the data blocks which are available in the Data Files of an archive. The archiver toolset uses index files for two slightly different purposes:

1. Each ArchiveEngine creates an index for the data files that it writes. We refer to this combination of index and data files as a Sub-Archive. If a sub archive contains data for a certain channel and time range, it will contain that data only once.
2. We can create a Master Index that points to data in several sub archives. Several sub-archives might contain data for the same channel and time range. When we combine sub-archives into a master index, we can assign Sub-Archive Priorities to determine what data is considered more important.

Another important difference between sub-archive index files and master index files lies in the fact that the sub-archive index files only the names to their data files: The sub-archive index resides in the same directory as its data files, so a path name is not required to get from the index to the data files. A sub-archive index and its data file can be moved to a new location. As long as the index file and its data files remain together in one directory, the location of that directory does not matter.

The master index file on the other hand contains the path names to its data files, because different sub-archives can use the same data file names within their sub-archive directory. We can only distinguish these data files by their full path. Once a master archive index has been created, the sub-archives must therefore not be moved. After relocating any of the sub-archives, the master index needs to be recreated.

Inside the index file, the channel names are maintained in a hash table and the data block information is kept in a modified RTree structure. An RTree [4] is a balanced tree tailored for holding multidimensional data like rectangles, allowing lookup of rectangles via points that fall inside rectangles. Sergei Chevtsov extended this concept to handle time ranges by requiring that the leaf node entries are non-overlapping and sorted in time.

Each RTree node consists of several records. How many records there are per node is determined by a tunable parameter  $M$ : The archiver tools use  $M$  as the upper limit of records per node, i.e. a node will simply contain up to  $M$  records. (The literature often applies  $M$  in a slightly different way, where nodes contain up to  $2M - 1$  records.) The records in the leaf nodes of the tree point to data block information (i.e. path to a data file and offset inside that data file) and the time range that is covered by the data block. The records do not overlap, i.e. no two records will cover the same time range, and the records are sorted in time. Since the actual data blocks might overlap (at least for a master index), more than one non-overlapping record might refer to the same data block. Records in parent nodes reflect the time range covered by all their child node records, up to the root node records which hold the total time range covered by all the data blocks.

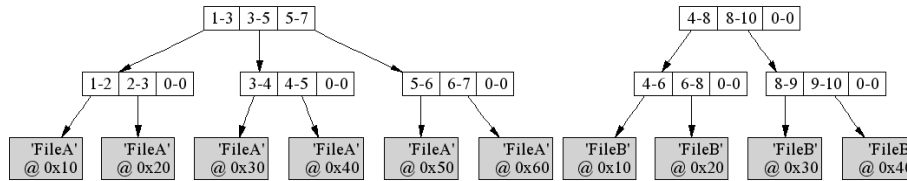


Figure 8.1: RTree Demo, refer to text.

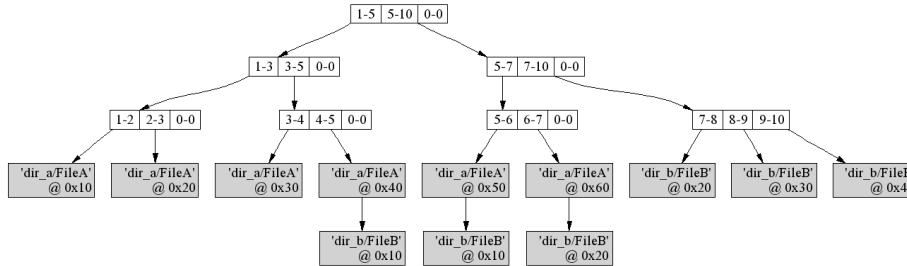


Figure 8.2: RTree Demo, refer to text.

Fig. 8.1 demonstrates two trees with  $M = 3$ . The one to the left covers the total time range from “1” to “7” (in the real world, these numbers would be much bigger since they represent seconds since some “Epoch”). The data for the time range from e.g. “3” to “4” can be found in data file “FileA” at offset 0x30.

To handle a request for a time range [3;6], we first determine if that range is covered by the tree at all by checking the root's time range. Since that is the case, we go down one level, check the sub-nodes, go down again etc. until we end up at the data blocks.

Fig. 8.2 demonstrates how the two trees from Fig. 8.1 would be combined into a Master Index, assuming that the tree for FileA resides in directory `dir_a` and the data for the second sub-archive resides in `dir_b` relative to the master index. Note how all the data blocks now include a path together with a file name. Since the sub-archive for FileA was listed first in the configuration of the master index, its data blocks take precedence over those from FileB whenever there is an overlap.

The examples used a small number for  $M$  so that one can see the tree structure even though we only have a few data blocks. Bigger values of  $M$  will reduce the number of read and write operations because the tree is accessed node by node, reading respectively writing all  $M$  records of a node in one system call. A big  $M$  value will also reduce the height of the tree, as well as the number of nodes and read/write calls. On the other hand, the size of a node obviously grows with  $M$ , and the time for reading respectively writing a single node can slightly increase. In general, the number of read/write system calls has a bigger impact on the performance than the size of the individual reads/writes. The records within a node are accessed via a linear search over all the records in a node. A bigger  $M$  will require slightly more CPU time for this linear search, which again is negligible compared to the time required for disk access. Overall, a bigger  $M$  is likely to increase performance because it reduces the number of disk accesses. The mayor drawback to a big  $M$  results from possible fragmentation: If you create many small sub-archives, each tree of the sub-archive will only contain few entries. The minimum size of the tree as well as the size increment whenever a new node needs to be added is determined by  $M$ . Big values of  $M$  can result in a lot of unused space in the index file, creating unnecessarily big index files. Section 8.5 will present some quantitative details on the performance of the RTree index.

### 8.1.1 Implementation Details

Table 8.1 shows the basic layout of an index file. The header of the index file contains a 4-ASCII character magic id like 'CAI2' for "Channel Archiver Index Type 2", and the hash table anchor. Those 12 bytes constitute "reserved space" for the FileAllocator class. What follows is start- and end pointers for the FileAllocator's list of allocated and available items, because the remaining file space is handled by the FileAllocator class. The first allocated region is the NameHash, so it's start location would be known. Each hash table entry points to the start of channel entries that hashed to the respective value, and each channel entry contains the anchor for its RTree. The "RTree pointer" in the Hash Entry is actually a file name and an offset. Initially, that file name is empty, because all RTrees are in the same index file that contains the hash

Offset	Content
0x0000	'CAI2'
0x0004	NameHash anchor: start (0x30), size N
0x000C	FileAllocator used list: size, start (0x24), end
0x0018	FileAllocator free list: size, start, end
0x0024	FileAllocator header: size, prev(0), next(??)
0x0030	Hash Table Entry 0: Pointer to first entry for this hash value
0x0034	Hash Table Entry 1:
...	...
??????	Hash Table Entry N-1:
...	...
??????	FileAllocator header: size, prev(0), next(??)
??????	Hash Entry: next, RTree pointer, channel name
...	...
??????	FileAllocator header: size, prev(0), next(??)
??????	RTree: pointer to root node, M value
...	...

Table 8.1: Index file: Example layout.

table. Eventually, that index file might get too big, so the file format already allows for RTree entries to point to other index files. Like every file block after the “reserved space”, the hash table and each channel entry are preceded by a FileAllocator header.

An RTree entry consists of the pointer to the root node and a number of records per node  $M$ . The RTree nodes are interlinked as shown in the example in Fig. 8.1 and 8.2, where each node and data block is allocated from the FileAllocator class. For details of how the nodes and data blocks are written to the disk, please refer to the source code.

## 8.2 Data Files

The data files store the actual data, that is the time stamps, values and the meta information like display limits, alarm limits and engineering units. The archiver stores data for many channels in the same data file. There aren't separate data files per channel because that would produce too many files and slow the archiver down. The names of the data files look like time stamps. They are somewhat related to the time stamps of the samples in there: The name reflects when the data file was created. We then continue to add samples until the engine decides to create a new data file. This means that a data file with a name similar to yesterday's date can still be filled today.

**Conclusion 1:** Ignore the names of the data files, they don't tell you anything of use about the time range of samples inside.

### 8.2.1 Implementation Details

Offset	Content
0x0000	'ADF1' (†)
...	...
0x0FFC	'INFO' (†)
0x1000	Numeric CtrlInfo display limits, units, ...
...	...
...	'DATA', channel name (†)
0x2000	<u>Data Header</u> prev buffer: "", 0 next buffer: "X", 0x4000 CtrlInfo: 0x1000 dbr_type: dbr_time_double buffer size, amount used, ... <u>Buffer:</u> dbr_time_double, dbr_time_double, ...
...	...
...	'DATA', channel name (†)
0x4000	<u>Data Header</u> prev buffer: "X", 0x2000 next buffer: "Y", 0x4000 CtrlInfo: 0x1000 ... <u>Buffer:</u> dbr_time_double, dbr_time_double, ...
...	...

Table 8.2: Data file: Example layout for a data file "X".

Table 8.2 shows the basic layout of a data file "X", with items marked by (†) only available since version 2-1-1 of the ChannelArchiver toolset. The 'DATA' marker for the Data header at offset 0x2000 would start at

$$0x2000 - 4 - \text{length}(\text{channel name}) - 1$$

in order to allow for the string "DATA" and the null-terminated channel name.

Most important, the data file primarily stores data. It does not need to know about the channel names to which the data belongs, except for the recently added (†) tags. The index would for example tell us that the data of interest for channel "fred" can be found in data file "X" at offset 0x2000. In there, the Data Header points to the preceding buffer (none in this case) and the following

buffer (in this case: same file, offset 0x4000). It also provides the data type, size and number of samples to be found in the Data Buffer which immediately follows the Data Header.

**Conclusion 2:** A data file is nearly useless without the accompanying index file, so you should not separate them.

The Data Buffer contains the raw `dbr_time_xxx`-type values as received from `ChannelAccess`. The meta information, that is: limits, engineering units or for enumerated channels the enumeration strings, are stored in a `CtrlInfo` block. Each Data Header contains a link to a `CtrlInfo` block, in this case one at offset 0x1000 which happens to contain numeric control information. Each buffer contains a certain number of samples. Whenever a buffer is full, a new one is added. The new buffer might be created at the end of the same data file, but the engine might also create a new data file after a certain time or whenever a data file gets too big. In the example from Table 8.2, the first buffer at offset 0x2000 links to a next buffer at offset 0x4000 in the same file “X”, and that buffer in turn points to another buffer in a different file “Y”. Note that both the buffer at offset 0x2000 and the one at offset 0x4000 share the same meta information at offset 0x1000, probably because the meta information has not changed.

**Conclusion 3:** Do not delete individual data files, because this will break the links between data files and result lost samples. Do not remove the index file. All the data files that were created in one directory together with an index file need to stay together. You can move the index and all data files into a different directory, but you must not remove or rename any single data file.

### 8.3 Index and Data File Repair

Beginning with version 2-1-1 of the `ChannelArchiver` toolset, the items marked with (†) in Table 8.2 were added. A 4-ASCII character magic ID at the start of the data file identifies the new file type. Each `CtrlInfo` is preceded by ‘INFO’ and each Data Header is preceded by ‘DATA’ followed by the null-terminated channel name.

The “RecoverIndex” subdirectory contains a tool thankfully provided by Noboru Yamamoto which can be used to repair a damaged or lost index file, by searching the data files for the ‘INFO’ and ‘DATA’ tags. See the `Readme.txt` in that subdirectory for details.

As for data file repair, one can use the Data Tool described in the following section to copy all the data that’s still accessible in a damaged data file to a new archive.

### 8.4 Data Tool

The `ArchiveDataTool` allows investigation of data files as well as conversion from old directory-file based archives into ones that utilize an index file. It also allows some basic data management as described in the next sections.

USAGE: ArchiveDataTool [ Options ] <index-file>

Options:

-help	Show help
-verbose <level>	Show more info
-list	List channel name info
-dir2index <dir . file>	Convert old directory file to index
-index2dir <dir . file>	Convert index to old directory file
-M <1-100>	RTree M value
-blocks	List data blocks of a channel
-Blocks	List all data blocks
-dotindex <dot filename>	Dump contents of RTree index into dot file
-channel <name>	Channel name
-hashinfo	Show Hash table info
-seek <time>	Perform seek test
-test	Perform consistency tests

### 8.4.1 Delete Channels, Data

Given one index file and its associated data files, you cannot remove a channel, the data for a channel, or the data for a certain time range from that sub-archive. In principle one can imagine deleting a channel's information from the index file, but that simply turns its data blocks inside the data files into orphans. It does not release the disk space occupied by the channel's samples, so why bother? Similarly, removing the index entries of one channel for a specific time range would not free up the associated disk space inside the data files.

Looking at data files with names that indicate dates, for example "20051210", "20051211" and "20051212", one might be led to believe that deleting the file "20051211" frees up disk space and deletes the data for that day in December, 2005. It *will* free up disk space, alright. But the file name "20051211" only indicates the creation date of that file. It will contain samples of channels from that date on, until data buffers inside the file get filled. So it can contain data up to Christmas 2005 and further. For other channels, data for Dec. 11 and 12 will actually be in the file "20051210", because a data buffer in there was still being filled on Dec. 12. The only way of knowing what channels and time ranges reside in which file is to look at all the data blocks for all the channels ("-blocks" option). Furthermore, since the data blocks are interlinked, deleting one data file in a sub-archive might confuse the retrieval routines.

**NOTE:** The short summary is that one should under no circumstances try to directly modify or delete index and associated data files of a sub-archive.

What can you do? Delete the whole set of index and associated data files! This is one reason for creating daily or weekly sub-archives, so you can move,



copy and delete them without affecting other sub-archives.

One can also use the “-copy” option to copy a time range into a *new* sub-archive, and then delete the original. After deleting a sub-archive or replacing it with a copied-out time slice, you have to recreate indices that referred to that sub-archive.

### 8.4.2 Combine Sub-Archives

The generation of daily or weekly sub-archives reduces the amount of data endangered by ArchiveEngine crashes. In the long run, however, it is often advisable to combine the daily or weekly sub-archives into bigger ones, for example monthly. The smaller number of sub-archives is easier to handle when it comes to backups. It also provides slightly better retrieval times. In the following example, we assume that it's February 2004 and we want to combine daily vacuum sub-archives into one for the month of January 2004.

```
cd vacuum/2004
mkdir 01_xx
ArchiveDataTool -copy 01_xx/index 01_01/index \
    -e "01/02/2004_02:00:00"
ArchiveDataTool -copy 01_xx/index 01_02/index \
    -s "01/02/2004_02:00:00" -e "01/03/2004_02:00:00"
ArchiveDataTool -copy 01_xx/index 01_03/index \
    -s "01/03/2004_02:00:00" -e "01/04/2004_02:00:00"
...
```

Note that we assume a daily restart at 02:00 and thus we force the ArchiveDataTool to only copy values from the time range where we expect the sub-archives to have data. This practice somewhat helps us to remove samples with wrong time stamps that result from Channel Access servers with ill-configured clocks.

There is a perl command `make_compress_script.pl` that aids in the creation of a shell script for the ArchiveDataTool, but you need to review it carefully before invocation. Depending on your situation, monthly archives might either be too big to fit on a CD-ROM or ridiculously small, in which case you should try weekly, bi-weekly, quarterly or other time ranges for your sub-archives.

After successfully combining the daily sub-archives into a monthly one, you need to move that daily data out of the way and finally rebuild indices that use the data.

### 8.4.3 Reduce the Data Size, Data File Repair

The simple “copy” of one sub-archive onto another one like this will keep all channels and samples, but typically reduce the size of the data files. For daily sub-archives, it can be a reduction down to 1/10th of the original file sizes.

```
cd vacuum/2004
mkdir 01_01_copy
ArchiveDataTool 01_01/index -copy 01_01_copy/index
```

The reason lies in the fact that the data files contain data buffers, allocated by the engine without knowing how many samples to expect. So initially, a small buffer is allocated. When full, a new buffer of twice the original size is allocated and so on, up to a maximum buffer size. For engines that run briefly, for example only one day, many of these buffers are partially filled when the sub-archive is closed. When copied, the archive data tool can count the available samples before allocating data buffers for the copy, and thereby reducing the number of buffers and also avoiding any unused buffer space.

In addition, the copy process will skip data errors, omitting samples with time stamps that go backwards in time, or data buffers with invalid pointers to control information. It will *not* perform any real data file repair in the sense of magically assigning correct time stamps or control information, so the affected samples are simply lost, but the resulting copy of the original sub-archive should no longer result in any error messages on retrieval.

## 8.5 Statistics

It is impossible to provide universal performance numbers for the components of the ChannelArchiver toolset. Tests of a realistic setup are always influenced by network delays: IOCs communicate with ArchiveEngines, data client tools query data from the network data server. And while the archiver tools of course share the CPU with all the other applications that happen to run on the same CPU, the CPU speed is less important. Most crucial is the hard disk performance. Access to data on NFS-mounted disks is by orders of magnitude slower than access to data on local disks. Hard disk access is also hard to reproduce: At least under Linux, the second run of a test is always faster because the operating system caches the disk access. In general, the fewer files and the smaller the involved files are, the better as far as speed is concerned, because the operating system will cache access to files as long as memory allows.

The RTree is a balanced tree. Mathematically, this means that the number of read requests required to locate a node in an RTree depends on the height of the tree, which is again logarithmically related to  $M$  and the number of nodes in the tree. An RTree with  $M=50$  and height 5 for example has one root node with 50 pointers to sub-nodes, then up to  $50^2$  nodes on the second level and so on, resulting in access to more than  $10^8$  records on the fifth level, that is: with only 5 reads requests to the disk. In practice, however, there can be a big time difference between 5 read requests to a file of 10 MB total size compared to 5 read requests to a file of 500 MB total size, because the former could be completely buffered by the operating system, while access to the latter will result in individual disk access operations.

The following are performance values obtained on a computer with a 1 GHz

CPU, an ordinary IDE disk, that was mostly idle while the archiver tools ran. The corresponding values on a machine with an 800 MHz CPU, concurrently used by other people, but faster hard disks (Mylex DAC960PTL1 PCI RAID Controller with 5 Quantum Atlas 10K drives) were slightly better.

We also provide some comparison to the previous architecture that used the same data file format but instead of the RTree-based index there were “Directory Files”: A channel name hash table with pointers to the very first and last data block.

### 8.5.1 Write Performance

As a baseline for raw data writing speed, the ‘bench’ program that can be found in the ChannelArchiver/Engine directory consistently writes at least 80000 values per second on the test computer.

### 8.5.2 Index Performance

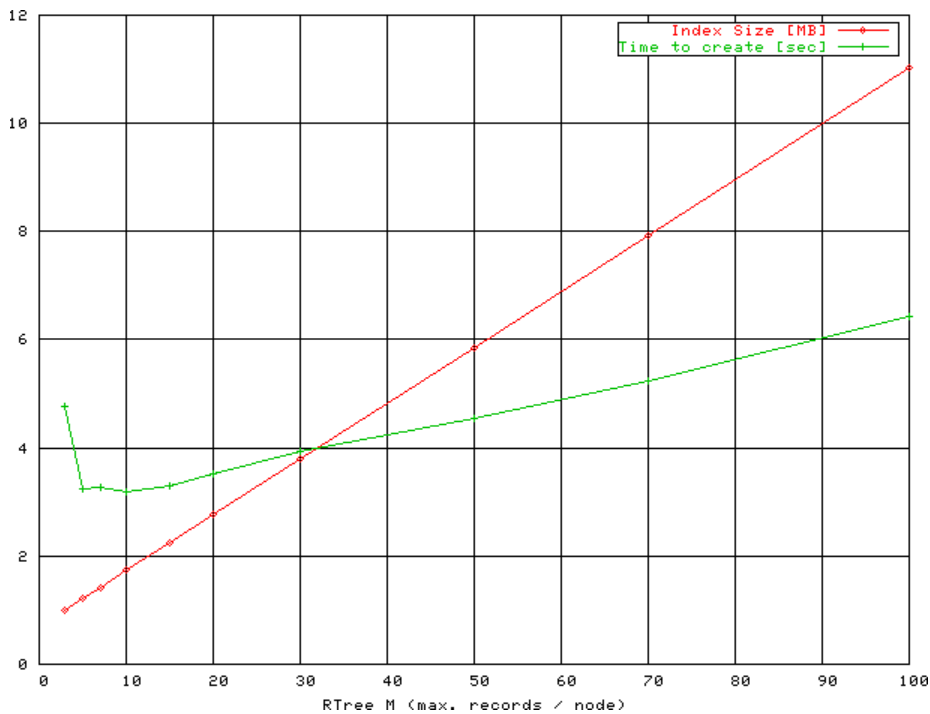


Figure 8.3: RTree  $M$  value tuning for small index, see text.

Performance and size of the index depend on the  $M$  value configuration of the RTree. Fig. 8.3 displays the file size and the time needed to create an index

for a small archive with 5100 channels. The samples occupy 8400 data blocks in a 12 MB data file. The ArchiveIndexTool was used to convert the existing index file of the archive into new indices with different  $M$  values.

From the number of channels and data blocks it follows that the samples for most channels occupy only one or two data blocks. Consequently almost all channels can be handled by degenerated RTrees, each with a single node that is both root and leaf of the tree, using only 1 or 2 records in that node. Any records beyond the first few remain unused. Fig. 8.3 clearly indicates how the file size grows linearly with  $M$  due to those unused records. The changes in the time needed to create an index can probably be explained as follows: After creating the first new index with  $M = 3$ , the time dropped observably because the operating system would from now on cache most read requests to the original index. With growing  $M$ , the time again increases caused by the growing file sizes of the new indices.

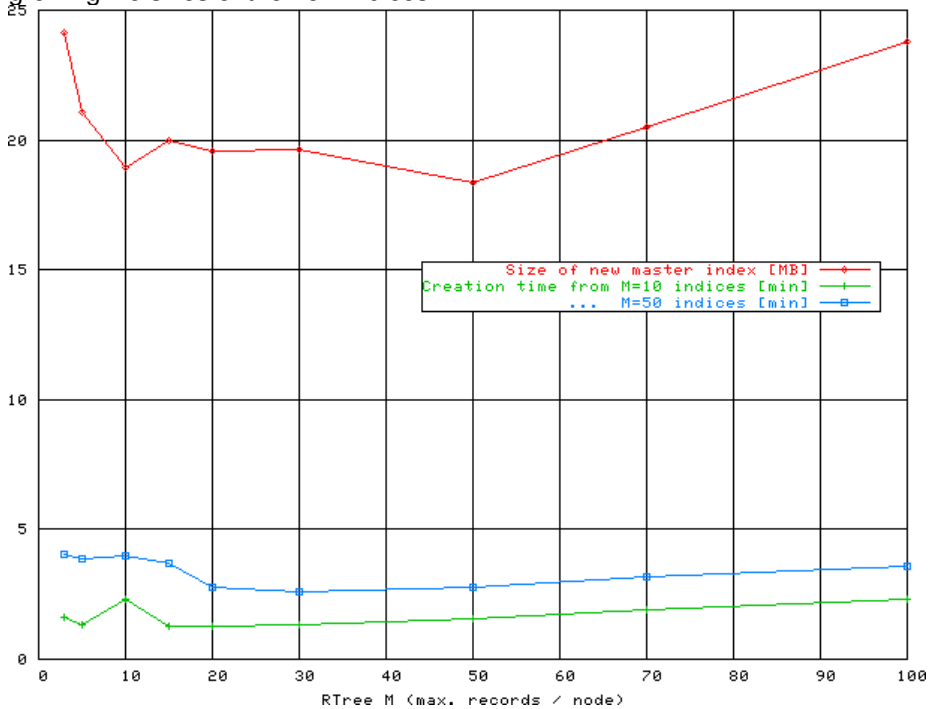


Figure 8.4: RTree  $M$  value tuning for master index, see text.

Fig. 8.4 compares the file sizes and creation time over  $M$  of a master index that covers 27 sub-archives, a total of 635 MB of data files containing 248261 data blocks for 6164 channels. The smaller archive from the preceding section is actually one sub-archive of this master index. Because some channels have only very few samples, while other channels might have changed every 30 seconds, there cannot be one  $M$  value that is ideal for every channel handled

by the master index. By creating the master index with different values of  $M$ , we are looking for a compromise that gives best index performance across channels.

Fig. 8.4 shows that values between 10 and 50 result in a smaller master index than  $M$  values outside of this range. Remember that for a given height, the number of leaf records in an RTree grows exponentially with  $M$ , so slight increases of  $M$  beyond 50 will vastly increase the number of leaf records. Archives with twice or ten times the number of data blocks will therefore not require  $M$  values that are equally 2 or 10 times bigger. Only very small increases of  $M$  would be beneficial. If we consider that in general those bigger archives will also contain channels with only a few samples,  $M = 50$  will probably be “as good”.

In the following,  $M$  was kept at 50, the default for most archive tools.

- 12 sub-archives, 1.2 MB of old directory files, 1.4 GB Data files:  
 Converting directory files into index files with  $M = 50$ : Just under 3 minutes, resulting in 11 MB for the new index files.  
 Creating a master index: 37 seconds for a master index of 9 MB. The master index is slightly smaller than the sum of the individual sub-indices because of better RTree utilization: The  $M$  was configured to be 50 in all cases and many channels in the sub-archives use only a fraction of a single RTree node, down to an average record usage of 8%, while the master index uses around 50%. A re-run of the ArchiveIndexTool tool is faster because it detects data block that are already listed in the master index and therefore not added again. In this case, the re-run took 10 seconds.
- 92 sub-archives, 12 MB directory files, 2.3GB of data files:  
 Converting into 61 MB of index files: About 12 minutes.  
 Creating a master index: Under 2 minutes, the resulting index uses about 18 MB. Re-run: 30 seconds.

### 8.5.3 Impact of Data Management on Performance

As a less-than-perfect example, we created a collection of mostly hourly sub-archives, resulting in 297 sub-archives, 158 MB index files, 307 MB data files. Creation of a master index took about 25 minutes, resulting in a master index file size of 65 MB. A re-run of the Index Tool took about 3 minutes.

By combining the hourly sub-archives into monthly ones, the count was reduced from 297 sub-archives to only 16. This took about 8 minutes, resulting in 5.5 MB for index files and 148 MB for data files. Creation of a master index for the 16 sub-archives now took 26 seconds, a re-run was further reduced to 1.5 seconds. Overall this shows that periodic data management, combining individual sub-archives into fewer ones, will reduce not only the number of files but also file sizes, resulting in better performance.

### 8.5.4 Binary Index compared to list index

The following data was actually taken with the old “multi archive”, which is basically equivalent to the current “list” index which simply uses a linear list of sub-archives without any further optimization.

We took a test archive consisting of 638 small sub-archives, where the data files totaled only a little over 400 MB. A master index was created as well as a “multi archive” file that lists the 638 sub-archives. Creation of that master index too 15 min.OB

- Time to list all 540 channel names: <1 second.  
This takes 40 seconds with the old “multi archive” file. The results for finding names that match a pattern or determining the available time range for a channel are similar.  
  
The new index is clearly superior in this test case simply because the data is contained in one index, while the “multi archive” file required access to all 638 sub-archives.
- The time to retrieve a few samples from the start, middle or end of the archive is fairly constant around 0.1 seconds with the new index. With the previous implementation, the lookup time for the samples depends on where the respective sub-archive is positioned in the multi-archive file. In one test it ranged from 0.1 to 10 seconds. When the data is found in the first few sub-archives listed in the multi-archive file, the times compare to the new index. The further one goes down the list of sub-archives as they appeared in the multi-archive file, the longer it takes. A reproducible test is difficult because the preceding tests (list all channels) causes the operating system to cache many of the sub-archive's directory files.

### 8.5.5 Retrieval Performance

Tests of the retrieval performance often include not only the code for getting at the data but also for presenting it. In the case of the command-line Archive Export program this would be the process of converting time stamps and values into ASCII text and printing them. In the following tests, the output was redirected to a file.

- Use ArchiveExport to dump all the 143000 values for a channel: 4 seconds, translating into 35700 values per second.
- Use ArchiveExport to dump all the values of one month for 7 channels in a spreadsheet format, which adds the effort for ‘staircase’ interpolation to the previous test case: Each channel had 20000 to 30000 values. The interpolation generated a 95000 line spreadsheet in 11 secs, that is around 8600 lines/sec. On a second test run, the time was reduced to 7 seconds, again showing the impact of buffering by the operating system.

- Use Matlab to retrieve the first 500 raw samples of the same 7 channels: The ArchiveServer ran 0.7 seconds, Matlab used a total of 1.7 seconds from sending the request to receiving the data.
- Use Matlab to retrieve data for the same 7 channels, asking the network data server to reduce the raw data (which formed the 95000 line spreadsheet in the previous test) into 500 “Plot Bins”: Around 1500 values per channel were retrieved in 5 seconds. The ArchiveDataServer.cgi ran 3 seconds, so about two seconds were added by the web server, network transfer, Matlab MEX code and Matlab.
- Use the Java Archive Client to retrieve the same 7 channels into 800 “Plot Bins”: Around 2100 values per channel were retrieved and plotted in 12 seconds. (When using the alternate machine with the slower CPU but RAID disks as the data server, the time was reduced to 8 seconds). The Java client was still usable, but slow to respond with this amount of data: Zoom requests took about 2 seconds.

This shows that the initial lookup of a channel and the location of the samples in the data files requires a certain time. Reading the values can then be quite fast and reach more than 30000 values per second when simply fetching the raw samples. Interpolation or binning can internally reach this speed when investigating the raw data,

The network data server typically adds about 1 second of overhead.

## Chapter 9

# Common Errors and Questions

The following explains error messages and commonly asked questions.

### 9.1 Why is there no data in my archive?

The ArchiveEngine should report warning messages whenever the connection to a channel goes down or when there is a problem with the data. So after a channel was at least once available, there should be more or less meaningful messages. After the initial startup, however, there won't be any information until a channel is at least once connected. So if a channel never connected, the debugging needs to fall back to a basic CA error search:

Is the data source available? Can you read the channel with other CA client tools (probe, EDM, caget, camonitor, ...)? Can you do that from the computer where you are running the ArchiveEngine? Does it work with the environment settings and user ID under which you are trying to run the ArchiveEngine?

### 9.2 Why do I get #N/A, why are there missing values in my spreadsheet?

There are several possible reasons for not having any data: There might not have been any data available because the respective channel was disconnected or the archive engine was off. Consequently there is no *value*, and a spreadsheet might show '#N/A' in the value column. When you look at the *status* of the channel, those cases might reveal themselves by status values like "Disconnected" or "Archive Off". (The ArchiveExport tool, Java client and other programs usually have a "status" or "text" option that you need to use in order to see the status. By default, you might only see the value).



The ArchiveEngine might also have crashed, not getting a chance to write “Archive Off”. That would be a likely case if no channel has data for your time range of interest. The most common reason for missing values, however, simply results from the fact that we archive the original time stamps and you are trying to look at more than one channel at a time. See the section on time stamp correlation on page 11.

### 9.3 Why do I not get what I think I should get from the network data server?

I do not know a good way to debug the archive data server when it runs as a CGI tool. Since it is started by the web server, one cannot easily attach a debugger to it. About the only thing that one can check:

```
/tmp/archserver.log
```

Per default, the archive data server will append to the archserver.log file whenever run. As a result of a 'get\_values' request, it will log the request and some basic result information:

```
----- ArchiveServer Started -----
archiver.get_values
how=3, count=10
get_channel_data
Start: 03/23/2004 10:47:46.000000000
End : 03/23/2004 10:50:57.000000000
Method: Plot-Binning, 19.1 sec bins
Open index, key 1 = '../DemoData/index'
Handling 'fred'
40 values
Handling 'janet'
40 values
ArchiveServer ran 0.00754285 seconds
```

In case of problems, one can check if the data server received the correct request. On the machine where the data server is running, one can then try to reproduce the request with the command-line ArchiveExport tool.

To disable this data server log file, look for 'LOGFILE' in the data server sources.

### 9.4 Back in time?

The archiver relies on the world going forward in time. When retrieving samples from an archive, we expect the time stamps to be monotonic and non-decreasing. Time stamps going back in time break the lookup mechanism.

Data files with non-monotonic time stamps are useless. Unfortunately, the clocks of IOCs or other computers running CA servers can be mis-configured. The ArchiveEngine attempts to catch some of these problems, but all it can do is drop the affected samples, there is no recipe for correcting the time stamps.

Bottom line: You need to have the clocks of all CA servers properly configured (also see page 3). There are other reasons for back-in-time warnings that have no good solution:

- When a channel disconnects or when the ArchiveEngine is shut down, the engine will add “Disconnected” or “Archive Off” values to the archive. Those values will carry the current value of the host’s clock, the current time stamp of the computer that is running the engine. The host’s clock is rarely perfectly synchronized with the IOC’s clocks, so if we had just received a sample from the IOC and the host’s clock is only a little late, we’ll get a “back in time” warning.

To resolve this, the engine will tweak the time of the “Disconnected” or “Archive Off” values so that they’re stamped just after the last sample in the archive.

- When a channel gets disabled, it really gets disabled because *another* channel in its group, one that was configured as “disabling”, turned true and thus disabled the whole group. The engine writes a “Disabled” value for each disabled channel, and as a time stamp it uses the time stamp of the channel that caused the disable. This will later help you to see exactly when channels were disabled and why because the disabling and the disabled channels will all have the same time stamp.

A problem arises especially when the disabling channel is from a different IOC. Assume we just received samples for several channels and added them to the archive, and then some split seconds later the value of the disabling channel arrives, delayed by the network. That disabling time stamp might be a little older than the stamps of the values that we already wrote, so the attempt to add a “Disabled” value results in back-in-time warnings (which again get resolved by hacking the time stamps).

- Some channels seldom change. Examples include “Setpoint” channels which are only modified by operator input. They might stay the same for days or weeks. When an ArchiveEngine stops, it will add an “Archive Off” event. When it is then re-started, it will receive the current value of a channel, which might older than the “Archive Off” event. So the current value causes a back-in-time situation, again resolved by using the last time stamp in the archive instead of the original stamp of the sample.

In summary, most back-in-time warnings can be ignored as long as the clocks of the hosts and IOCs are reasonably in sync.

## 9.5 Found an existing lock file 'archive\_active.lock'

When the ArchiveEngine is started, it creates a lock file in the current directory. The lock file is an ordinary text file that contains the start time when the engine was launched. When the engine stops, it removes the file.

The idea here is to prevent more than one archive engine to run in the same directory, writing to the same index and data files and thus creating garbage data: Whenever the archive engine sees a lock file, it refuses to run with the above error message.

Under normal circumstances, one should not find such lock files left behind after the engine shuts down cleanly. The presence of a lock file indicates two possible problems:

- a) There is in fact already an archive engine running in this directory, so you cannot start another one.
- b) The previous engine crashed, it was stopped without opportunity to close the data files and remove the lock file. It *might* be OK to simply remove the lock file and try again, but since the crash could have damaged the data files, it is advisable to back them up and run a test before removing the lock file and starting another engine.

## 9.6 Crashes of the ArchiveEngine, ...

Though some care was taken in testing the ArchiveEngine, several problems will remain. Before you go all the way to implement a better if not perfect ArchiveEngine or other piece of the ChannelArchiver yourself, you might want to see if you can reproduce the crash and aid in debugging it.

Under Linux, this usually means: Allow the generation of “core” files and investigate them. With recent Linux distributions, add “set ulimit -c unlimited” to your login-script. When the ArchiveEngine crashes, it should now generate a core dump, often called “core.<PID>”, using the process ID of the crashed process. Then use “gdb” to locate the area of code that caused the crash:

```
cd /where/the/core/file/is
gdb /full/path/to/ArchiveEngine core.12345
# Generate a stack trace
bt
# You should see a stack trace leading up
# to the crash , something like
# 0  write (...)
# 1  printf (...)
# 2  MsgLogger(..)
# 3  ArchiveChannel::handle_value (...)
# 4  ...
```

```
# Now you can select some stack frames and see
# what is happening in there
frame 3
list
# ... shows the code in
#     ArchiveChannel::handle_value(..
# that leads up to the crash
quit
```

Please email the result so that we can try to eliminate the problem.

## 9.7 Cannot create a new data file within file size limit

You specified a rather small file size limit (`file_size` option in the ArchiveEngine configuration), and the currently required buffer size for a single channel already exceeds that file size limit. The Engine will actually go ahead and create a bigger file in the hope that this avoids data loss.

One example that could cause this: You try to archive array channels, where each individual sample is already quite big, and picked a tiny `file_size`.

## 9.8 Found an existing 'indextool\_active.lck' lock file

When an ArchiveIndexTool is started, it creates a lock file similar to the ArchiveEngine, in the hope of preventing more than one Index Tool from modifying a master index at the same time. See preceding description of `archiver_active.lck` file.

## 9.9 What is a “regular expression”?

See a book on perl or the manual page for “grep” for details. The following table compares the regular expression syntax with the simpler file name wildcards. Most regular expressions don't have a wildcard equivalent.

Reg. Exp.	Wildcard	Matches...
.	?	any single character
.*	*	any string with 0 or more characters
.+		any string with 1 or more characters
^		start of string
\$		end of string
[aA]		'a' or 'A'
[0-9]		any single digit
[0-9]+		'0' or '1234' or ...
^abc\$	abc	'abc'
b	*b*	'abc' or 'bbb' or 'xby' or ...

## 9.10 What about using NFS?

For the network data server, it's probably OK to place some of the actual data on volumes that are NFS-mounted and not local to the data server. For the archive engine, use of NFS is discouraged.

For one, the performance of NFS is usually by orders of magnitude below the performance of locally mounted disk drivers. In addition, NFS mounted disk drives can always have unexpected errors as a result of network delays or outages. The API for writing files, that means the read, write, and seek calls offered by the operating system, does not offer a clear indication if an error was a disk error or a network error, because NFS was specifically designed to look like a local file system, which it's clearly not. So the detection of NFS errors is difficult. And even if the engine wanted to handle those NFS errors which are to be expected, should it simply stop for 10 minutes, then try again? What if such an error happens in the middle of a write cycle, where partial data was written, and the archive files are in an inconsistent state? So as long as these issues are not properly addressed, the use of NFS with archive engines is strongly discouraged.

# Chapter 10

## Legacy

The main difference between the current version of the Channel Archiver toolset and previous versions are:

- EPICS Base: Current toolset requires R3.14.4 or later.
- Index: Current toolset uses index files, previous toolset used Directory files.
- Configurations: All configuration files are based on XML, while they used to be generic ASCII files.

### 10.1 Directory Files

In case you have existing archives based on Directory files, you can use the ArchiveDataTool to create an index file for each existing directory file and that way migrate to the new toolset. The ArchiveDataTool can also create Directory files from index files, in case you need to use an older tool to investigate data in new archives.

### 10.2 ArchiveManager

The ArchiveManager command line tool for managing archives that use the older Directory files is still available. It does *not* work with the new index files. After migrating the data to the new index format, ArchiveDataTool replaces the ArchiverManager. You can use the ArchiveDataTool to create index files for existing directory files.

### 10.3 CAManager, CAbgManager

The ArchiveDaemon offers the basic functionality of the CAbgManager: It monitors, starts and restarts ArchiveEngines and offers a web page for status information. There is no graphical configuration tool comparable to the CAManager, you have to create the XML configuration file for the ArchiveDaemon by hand.

### 10.4 Archive Engine ASCII Configurations

The ChannelArchiver/Engine directory contains ConvertEngineConfig.pl, a perl script that attempts to convert old-style ASCII configuration files for the previous ArchiveEngine into the new XML files:

```

USAGE:
ConvertEngineConfig [ options ] ASCII-config { ASCII-config }

Options :
  -d <DTD>          : Specify DTD
  -o <filename>     : Set output file name

This tool reads the ASCII configuration file
for an Engine and converts it into the XML
config file .

One can use either one ASCII config file
(with !group entries) or supply a list of
ASCII files , where each one will then define
a group .

```

Some sites might actually prefer to use the ASCII configuration files and convert them to the XML format with this tool, so here is a brief description of the ASCII format.

Each ASCII file defines a group of channels.

- “# Comment”  
Lines that start with '#' are ignored. As are empty lines.
- “!write\_period <seconds>”  
Configures the write\_period parameter. Most of the global engine parameters described in section 3.1 are allowed via the format “!<parameter> <value>”.

Note that these are global engine parameters. The XML format makes this fact somewhat obvious by listing them once in the header of the configuration. In the ASCII format, you can specify them on any line in any configuration file that is loaded by the engine. The effective value that

will be used by the engine for all channels is the value found last, i.e. subsequent “!...” parameters replace previous definitions.

- “!group <file-name>”  
Read another group file. To use this, you could create one “main” configuration file that contains only “!group ...” lines. Unfortunately, it used to be no syntax error to have a “!group ...” inside a file which was itself included via “!group ...”. While that might suggest the possibility of creating nested groups, it does not work that way. Each file creates a group, named after the filename, and the engine maintains only one flat list of groups, no sub-groups.  
  
Preferably, do not use the “!group ...” command at all. Simply create one ASCII file per group, and list all the group files that you want one engine to handle on the ConvertEngineConfig command line.
- “<channel> <period>”  
Selects scanned sampling of the given channel.
- “<channel> <period> Monitor”  
Selects monitored sampling of the given channel.
- “<channel> <period> Monitor Disable”  
Selects monitored sampling of the given channel; channel disables its group..



# Chapter 11

## Changes

This chapter describes the version numbers and changes since the beginning of the R3.14 port.

- 02/13/2007 — Version 2.12.0:  
Changed the implementation of "plot-binning". Originally, it returned the initial/mini/maxi/final sample for each bin. The initial and final samples were original, the mini and maxi were interpolated, losing original time and severity. Further, it usually clobbered 'info' samples like "archive off" or "disconnected".  
The 11/17/2006 change kept the 'info' samples, but that solution tended to lose the rest of the bin data after the first 'info' sample.  
The new plot-binning can return up to 5 samples per bin, (initial, mini, maxi, last 'info' sample, final), keeping their original time stamps and severity, sorting them by time.
- 01/29/2007 — Version 2.11.0:  
Config file allows specification of time periods as "1 second" or "1 minute" etc. instead of the previous plain number.  
Change in 'monitored get': It now adds repeat counts similar to the plain 'get', see rewritten manual section on scan mechanisms.
- 12/12/2006 — Version 2.10.0:  
Added a new retrieval method to the data server, an 'average' that interprets the request parameter as 'delta seconds' instead of 'count'. Upped the data server version to 1.
- 11/17/2006 — :  
PlotReader jumps to end of bin on first 'info' sample, so that it shows up in the end result. That hides the real min/max, but might be better than missing the 'off' or 'disconnected' samples in the plot.

- 11/13/2006 — Version 2.9.3:  
 DataServer had a quirk: In case of not finding any data, it would report Numeric meta info with units="No Data", because that looks good in e.g. a spreadsheet export. At the same time, however, it would report the samples to be of enumerated type, which clashes with numeric control info.
- 08/29/2006 — Version 2.9.2:  
 Suppress initial 'back in time' messages.  
 The engine writes an initial sample with the 'host' time. That's good for channels that change slowly, since their last time stamp might be way old, even before the last 'Archive Off' indicator. The host stamp asserts that we have one initial sample in the archive. On channels that change quickly, then arrive with a little network delay, we usually soon receive a sample that's stamped just before that last host-stamped sample, which resulted in a few initial 'back in time' warnings. Now the message log throttle for these messages gets fired with the first host-stamped entry, so messages are suppressed for about one hour.
- 08/14/2006 — Version 2.9.1:  
 John Sinclair noticed that the engine fails to store certain changes that affect only the channel's status and severity. The bug was inside the RawValue::hasSameValue() routine, it omitted a status and severity comparison. The error has been around for quite some time, so many thanks go to John for finally finding this.
- 07/10/2006 — Version 2.9:  
 In short:
  - Very neat index recovery tool written by Nobory Yamamoto.
  - Minor bugfixes to ExampleSetup.
  - Major refactoring of the ArchiveEngine code.

During restarts, ArchiveDaemon.pl waits for an engine that was stopped to remove its lock file before starting a new one.

Visible changes to the ArchiveEngine:

- Engine HTTPD displays "Idle Time" on its main page.
- The "disabling" mechanism now works better right at the start, while all the channels get connected in an unpredictable order. Before, the engine would like to log all disabled channels as DISABLED, but couldn't for those which were not yet connected, resulting in the "Cannot add event..." warning and no indication in the data as to why there is no data.
- ArchiveEngine uses about 2%-4% more CPU and memory.

Internally, the class layout has been reorganized, unit tests have been added, and everything was tested extensively, both with valgrind and purify, under R3.14.8.2, resolving some bugs in the CA client library.

Why? The class layout looked OK from a distance; there was an Engine, Group, ArchiveChannel, SampleMechanism, the latter derived into SampleMechanismMonitor etc. But while the SampleMechanism was supposed to handle the scanning, the ArchiveChannel held the Circular buffer into which the samples are placed, and the Engine handled the ChannelAccess 'flush' required for a 'get'. So there were several messy interactions, which made it impossible to test and debug for example a SampleMechanism as a Unit outside of the complete Engine.

In the rework, more classes were added 'below' the SampleMechanism: ProcessVariable, ProcessVariableFilter, ProcessVariableContext, and 'Listener' interfaces for these and the existing classes. This way, the ProcessVariable can be tested without the Engine, the sample mechanisms can be tested with test data, and the rather confusing code inside the sample mechanisms has mostly been replaced with a 'pipe' of ProcessVariableFilter classes, which again can be tested individually.

Semaphores use an "OrderedMutex" wrapper which helps to detect deadlocks. It also slows the engine down, because each 'lock' and 'unlock' now locates the mutex with a linear search. Compared to the engine's main impact of disk-I/O, that CPU load seemed negligible, so this error checking feature is per default enabled.

**NOTE:** When running under Fedora Core 2 (Linux kernel 2.6.5, gcc 3.3.3), the ArchiveEngine leaked memory whenever its HTTPD was accessed. The memory leak was visible in the "top" command, and in fact the engine would crash after some time with out-of-memory messages from pthread\_create.

Interestingly, "valgrind" did not indicate a memory leak on that same architecture. Furthermore, I could also not detect a memory leak on Red-Hat WS 4 nor Mac OS X, so I assume this was a freak behavior for only Fedora 2, some combination of its compiler and runtime library.

Also switched to using Eclipse as the IDE. Doesn't nearly work as nicely for C++ as it does for Java, but still better than "vi". Basic setup notes (please ignore if you don't plan to work on the sources):

- Unpack ChannelArchiver sources as usual.
- Open Eclipse, use the directory "extensions/src" as a workspace directory.
- Create a new Standard C++ Makefile Project, using "ChannelArchiver" as the name. It will parse the existing sources, but with a few indexer errors.

- In “Project/Properties/C/C++ Include Path and Symbols”, select ChannelArchiver, “Add Include .. from Workspace”, and add Tools, Storage, LibIO, XML-RPC, Engine.

- 03/27/2006 — Version 2.8.1:

Fix: The nanosecond check could cause a crash when receiving CA callback for ‘disconnected’ values.

- 03/24/2006 — Version 2.8.0:

Possibly the most visible change is in the ExampleSetup. Before, the “ArchiveDaemon” would run engines and perform indexing. The indexing has been moved into a different collection of scripts, meant to run on a “serving” computer, while the “sampling” machine runs only daemons and engines. Check the “Example Setup” in chapter 6 for details. It is probably not fully done, but has been running at the SNS for about two weeks, recently collecting 4 to 5GB of data per day, and serving a total of about 900GB of data for 2005 and 2006.

The code has been changed back to using C++ exceptions, as it did in the versions for EPICS base R3.13.

In this conversion process, many unit-tests have been added and checked under valgrind.

When compiled with R3.14.8, the more rigorous checking of time stamps in EPICS base would result in ‘assert’-aborts when the nanosecond-portion of time stamps was not normalized. This happened quite often at the SNS because of ongoing timing system driver development and last not least a bug in the Java data viewer. Guards have been added to the archiver code to hopefully avoid all such aborts. The Engine will ignore samples with problematic nanoseconds, while the retrieval tools will replace those nanoseconds with 0.

The retrieval code used by ArchiveExport and the ArchiveDataServer can now follow several soft links. So if /a/link is a soft link to /b/link which in turn points to /c/index which refers to data in “20060110”, the tools will now use the data from “/c/20060110” and not “/a/20060110”.

Some of the messages logged by the engine are now throttled to reduce the log file size.

- 12/13/2005 — Version 2.7.0:

Error reporting: When a command-line tool failed, one could see a rather specific error message like “Cannot open DataFile 20040323”. It also ended up in the log file of the network data server, but was not reported well via the XML-RPC protocol.

Now an XML-RPC fault with the more specific error message is returned when an index or data file access fails. A request for a channel that is not found at all is now also considered an error by the network data server.

When there is simply no data for the requested time, the meta information is returned without any actual samples, as before.

- 10/31/2005 — Version 2.6.0:

The toolset now compiles and runs on a 64 bit Linux system, specifically RedHat Enterprise Linux WS release 4 with gcc 3.4.4.

The goal here was to keep binary compatibility, so that index and data files can be moved from 32 bit computers to 64 bit machines and back. This means that the 32 bit limitations on file sizes still apply, even when running on a 64 bit computer.

Several new self-tests were added to check the following on the 64 bit system as well as 32 bit Linux and Mac OS X 10.3:

- All compiles with the 64 bit compiler, no warnings on the test system.
- 'Tools' library self-test passes.
- 'Storage' library self-test passes.
- ArchiveExport can dump demo data, matching results on all architectures.
- ArchiveDataTool can copy demo data, matching results on all architectures.
- DataServer runs from within shell script that simulates a CGI environment.
- ArchiveEngine runs, HTTPD responds, collected data passes simple tests.

- 09/21/2005 — Version 2.5.0:

New engine URL

```
.... castatus?/tmp/x
```

will cause the engine to dump the `ca_client_status()` output into the given file the next time it writes to the disk.

- 08/29/2005 — Version 2.4.0:

LinearReader rounds start time, because otherwise a request for multiple channels, all using linear interpolation, could loose lockstep, and when the result is put in a spreadsheet form, there are many more lines than expected from the per-channel view of the data, which confused the data viewer.

XML-RPC, being XML, sends all numbers as strings. Unfortunately, XML-RPC also insists in the simple 'dot' notation and prohibits exponential notation. A number like 1e-300 would turn into "0.0000000..." with 300 zeroes, which is too long for the internal print buffer of the xml-rpc C library. Since such huge and tiny numbers can't be transferred, they are replaced by 0 with `stat/sevr UDF/INVALID`.

The cut-off point is somewhat arbitrary. The XML-RPC library uses an internal print buffer of about 120 characters. Since PVs are usually scaled to be human-readable, with only vacuum readings using exp. notation for data like "1e-8 Torr", exponents of +-50 seemed reasonable.

- 07/18/2005 — Version 2.3.0:  
Added ArchiveDataServerStandalone.
- 05/31/2005 — Version 2.2.1:  
At the SNS with EPICS R3.14.7, there is an instance of an engine crashing in `ipAddrToAsciiEnginePrivate.cpp` in the `transactionComplete` callback while `pCurrent` was 0, which shouldn't happen:

```
if (!this->pCurrent)
    continue;
{
    epicsGuardRelease < epicsMutex > unguard ( guard );
    this->pCurrent->pCB->transactionComplete ( this->nameTmp );
}
```

In the process of debugging it, an uninitialized use of the HTTPD run duration variable and a scanlist memory leak on exit have been found by 'valgrind'. None of this should matter in the real world, but I prefer as little valgrind complaints as possible. Remaining memory leaks on exit are in the EPICS base code.

- 03/31/2005 — Version 2.2.0:  
Added a "Write Duration" status to the main page of the Engine HTTPD. It is a running average of the time spent writing to the disk. ExampleSetup includes a new script, "engine\_write\_durations.pl", which queries all engines for their write duration. The intent is to get an idea of how much time is spent doing disk I/O, and to get a grasp on which engine is doing worst.
- 03/21/2005 — Version 2.1.9:  
The ArchiveDaemon.pl script now creates a soft-link "current\_index" in the engine subdirectories, pointing to the currently used index. The idea is to have a common name for the active index in case the multi-index is broken or only updated slowly.  
  
The next issue was that the relation of an index to its data files must not change. If an index is in the same directory as its data files, OK, but this soft link was actually in a different location, so in order to still find the data files, the retrieval now follows sym-links to index files on level deep (not following arbitrary chains of soft links).
- 02/01/2005 — Version 2.1.8:  
At the SNS, one ArchiveEngine running a configuration with 'disabling'

channels tended to hang up just after a channel 'disabled' a group. While I was never able to capture this in the debugger or otherwise reproduce it, I did find a violation of the lock order in the code related to 'disabling' a group, so this might have been the reason.

- 10/26/2004 — Version 2.1.7:

In monitored mode, engine will always try to add two initial samples: One with the original time stamp, one with the host time stamp. This solves the restart problem:

Assume a setpoint PV is 3 days old. When we start an engine today, it'll write that 3-day old value. When we then stop and restart tomorrow in a new directory, a "Disconnected" value will be added before shutdown and then the same happens in the new directory. When now looking at both days, you would get the 3-day old value, a disconnect/off value and nothing else.

With this update, you will see one value with the host's time stamp each day in addition to the original time stamp, so even when viewed via a master-index, one sample per day should be visible.

ArchiveDaemon.pl no longer complains about an undefined "opt\_i", thanks to Paul Sichta for pointing this out.

- 09/07/2004 — Version 2.1.6:

Added Enable/Disable code to ArchiveDaemon. "ListIndex" bug fixes (sub-index was closed even though we're still accessing channels in the index).

- 08/26/2004 — Version 2.1.5:

Fixed bug in the engine code: PVs which never change were never written when sampling with period `j` `get_threshold`.

Working on a "ListIndex", allowing the retrieval tools to use an `indexconfig.dtd`-type list of sub-archives, querying them one by one. The result is slower than using a "real" index, but much easier to setup and maintain.

- 07/26/2004 — Version 2.1.4:

Bug in DataReader that affected all the retrieval code: The "find" uses the start time in an at-or-before sense, which is intentional for direct calls to `find()`. This happened, too, when it was used internally for the purpose of switching to a new data block ref'd by a (master) index. In that case, however, the start time given by the index must be observed in an at-or-after sense, otherwise we can go back in time.

Added the weekly option to the ArchiveDaemon. Not detailed in manual until we get some mileage on it.

- 07/23/2004 — Version 2.1.3:

Index update had a flaw: When an engine stops, that last value received via CA might have a time stamp of 10:00 and then we stop at 11:00, so

the last stored value is the “off” value at 11:00. When now a new engine starts, the first data is still 10:00, and that data is hidden under the last data block of the previous engine (...11:00). When then the new engine added more data, eventually beyond 11:00, that new data stayed hidden unless one rebuilt the master index from scratch. Hopefully fixed this.

- 06/30/2004 — Version 2.1.2:  
Added tags and channel names to the Data files, so that in the future one could try to write a rescue tool. Patch for XML-RPC C/C++ lib. allows small numbers. DataTools’ “index2dir” option now actually works. Matlab/Octave glue code can handle an array channel (when requesting a single channel, raw data). ArchiveDaemon generates indexupdate.xml for each re-index run; “-u” option.  
  
When retrieval uses a “master” index and reaches its end, it will try to continue by following links of the last data block in the sub-archive. This will allow us to get closer to “now” between updates of the master index. The first attempt to implement this failed because of errors in the handling of the path names (master index has path to data files, but when we follow the links inside the sub-archive’s data file, those are relative to where the sub-archive resides). Still not fully tested.
- 04/01/2004 — Version 2.1.1:  
Many little updates have been checked into CVS while the tools reported “2.1.1”. In the end, the engine supported sampling, monitoring and sampling-based-on-monitors, and ran without known problems under valgrind. The XML-RPC Data Server seemed to work fine, supporting raw data, plot-binning, spreadsheets, averaged and linear interpolation. Java Archive client is useable. Switched index file to CAI2, where the name hash includes a filename for the RTree. For now it’s left empty, but the file format now allows for a further extension where certain RTrees are in separate files as soon as the index file gets too big.
- 01/27/2004 — Version 2.1.0:  
Uses new RTree, initial XML-RPC Data Server, XML configuration files.
- 09/05/2003 — Version 2.0.1:  
Some bug fixes: The “scanned” operation didn’t work, and when all was monitored, the empty scan lists lead to a high CPU load. Still not perfect, the ChannellInfo code should be split into really monitored, scanned using CA monitor and scanned using CA get.
- 04/04/2003 — Version 2.0:  
Starting to work on R3.14 port.



## **Chapter 12**

# **Index, Bibliography**

# Index

- '#N/A', 12, 98
- /arch, 60
- /arch/scripts, 59
- Apache, 35
- archive\_active.lock, 68, 101
- archiveconfig.xml, 59
- ArchiveDaemon, 62
- ArchiveDataClient.pl, 46
- ArchiveDataServer, 35
- ArchiveDataTool, 89
- ArchiveEngine, 18
- ArchiveExport, 32
- ArchiveIndexTool, 55
- ArchiveManager, 104
- archserver.log, 99
- ASCII configuration, 105
- Averaging, 14
- back in time, 99
- binary index, 54
- broken master index, 76
- buffer\_reserve tag, 22
- CA, 1
- CABgManager, 105
- CAManager, 62, 105
- CGI, 35
- channel tag, 23
- ChannelAccess, 1
- ChannelAccess servers, 4
- Combine Sub-Archives, 91
- config tag, 66
- convert\_archiveconfig\_to\_xml.pl, 59
- ConvertEngineConfig.pl, 105
- cron, 70, 74
- current\_index, 68, 71, 73
- current\_index tag, 73
- daemon tag, 60
- Daemon Web Server, 68
- daily tag, 66
- damaged or lost index file, 89
- data buffers, 92
- Data File Repair, 91
- data file repair, 89, 92
- data management, 89
- Data Server, 34
- data sources, 4
- dataserver tag, 66
- daylight saving time, 10
- Delete Channels, Data, 90
- desc tag, 65
- disable tag, 24
- DISABLED.txt, 69
- disconnect tag, 22
- DST, 10
- engine tag, 66
- Engine Web Server, 28
- engine\_write\_durations.pl, 70
- EPICS, 1
- EPICS Time, 9
- EPICS\_TS\_MIN\_WEST, 10
- epoch, 10
- error messages, 98
- Expat, 81
- file size limit, 102
- file\_size tag, 21
- Filling, 13
- get\_threshold tag, 21
- global option, 21

- Greenwich Mean Time, 9
- group tag, 23
- host name, 61
- host tag, 74
- hourly tag, 66
- ignored\_future tag, 21
- Index and Data File Repair, 89
- index tag, 73
- indextool\_active.lock, 102
- IOC, 4
- Linear Interpolation, 14
- list index, 54
- local host, 61
- Local Time, 10
- localhost, 62
- lock file, 101
- lynx, 68
- mailbox, 74
- mailbox tag, 60, 65
- make\_archive\_infofile.pl, 70
- make\_archive\_web.pl, 70
- make\_compress\_script.pl, 91
- Master Index, 84
- Master Indices, 55
- max\_repeat\_count tag, 22
- md5 checksum, 74
- memory leak, 109
- meta information, 5
- monitor tag, 24
- Monitored Sampling, 6
- name tag, 23
- NFS, 103
- onlineconfig.xml, 29
- PCAS, 4
- period tag, 23
- port tag, 65
- postal, 70
- raw spreadsheet format, 12
- Re-build Indices, 76
- records, 4
- Reduce the Data Size, 91
- regular expression, 43, 61, 102
- Remove Channels, Data, 76
- repair, 89
- repeat count, 7
- restart tag, 66
- retrieval times, 91
- root tag, 60
- run tag, 65
- run tags, 61
- run-daemon.sh, 67
- Sample Mechanisms, 5
- sampling options, 4
- scan tag, 24
- Scanned Sampling, 7
- Scanned using Monitors, 8
- secure-copy (scp), 74
- send\_mailbox.pl, 74
- serverconfig tag, 60
- serverconfig.xml, 37
- show\_engines.pl, 70
- show\_restarts.pl, 70
- show\_sizes.pl, 70
- Spallation Neutron Source (SNS), 58
- Staircase Interpolation, 13
- start\_daemons.pl, 67
- stop-daemon.sh, 67
- stop\_daemons.pl, 67
- stop\_engine.sh, 68
- Sub-Archive, 84
- sub-archive, 61
- Sub-Archive Priorities, 84
- Sub-Archives, 70
- Time Period Specifications, 21
- time stamps, 3
- timed tag, 66
- update\_archive\_tree, 61
- update\_indices.pl, 74
- update\_server.pl, 74
- USPS, 70
- UTC, 9
- view-daemon.sh, 68

waveform meta information, [17](#)

weekly tag, [66](#)

write\_period tag, [21](#)

Xerces, [80](#)

XML-RPC Protocol, [40](#)

XML-RPC Setup, [78](#)

# Bibliography

- [1] *EPICS Web Page*, <http://www.aps.anl.gov/epics/>. 1
- [2] J. O. Hill: *Channel Access: A Software Bus for the LAACS*, ICALEPCS 1989, Vancouver. 1
- [3] K. U. Kasemir, L. R. Dalesio: *Overview of the Experimental Physics and Industrial Control System (EPICS) Channel Archiver*, Internat. Conf. on Accel. and Large Experim. Phys. Control Systems (ICALEPCS) 2001, San Jose, CA.
- [4] Antonin Guttman: *R-Trees: A Dynamic Index Structure for Spatial Searching*, Proc. 1984 ACM-SIGMOD Conference on Management of Data (1985), 47-57. 85
- [5] Marty Kraimer et al: *IOC Application Developer's Guide R3.14.4*, <http://www.aps.anl.gov/epics/>.
- [6] *Web Page of the DarwinPorts Project*, providing help with porting various open-source packages to Mac OS X, <http://darwinports.opendarwin.org>. 79, 80